

Datasheet for ABIN1387163
anti-C1orf172 antibody (AA 245-295)[Go to Product page](#)

1 Image

Overview

Quantity:	100 µL
Target:	C1orf172 (C1ORF172)
Binding Specificity:	AA 245-295
Reactivity:	Human, Mouse, Rat
Host:	Rabbit
Clonality:	Polyclonal
Conjugate:	This C1orf172 antibody is un-conjugated
Application:	Immunofluorescence (Paraffin-embedded Sections) (IF (p)), Western Blotting (WB), Immunohistochemistry (Paraffin-embedded Sections) (IHC (p))

Product Details

Immunogen:	KLH conjugated synthetic peptide derived from human C1orf172
Isotype:	IgG
Cross-Reactivity:	Human, Mouse, Rat
Purification:	Purified by Protein A.

Target Details

Target:	C1orf172 (C1ORF172)
Alternative Name:	C1orf172 (C1ORF172 Products)
Background:	Synonyms: C1orf172, Keratinocyte differentiation factor 1, KDF1

Target Details

Background: Plays a role in the regulation of the epidermis formation during early development.
Required both as an inhibitor of basal cell proliferation and a promoter of differentiation of basal progenitor cell progeny (By similarity).

Gene ID: 126695

UniProt: [Q8NAX2](#)

Application Details

Application Notes: WB 1:300-5000
IHC-P 1:200-400
IF(IHC-P) 1:50-200

Restrictions: For Research Use only

Handling

Format: Liquid

Concentration: 1 µg/µL

Buffer: 0.01M TBS(pH 7.4) with 1 % BSA, 0.02 % Proclin300 and 50 % Glycerol.

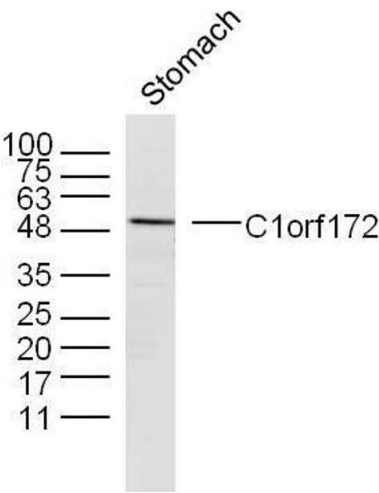
Preservative: ProClin

Precaution of Use: This product contains ProClin: a POISONOUS AND HAZARDOUS SUBSTANCE, which should be handled by trained staff only.

Storage: 4 °C, -20 °C

Storage Comment: Shipped at 4°C. Store at -20°C for one year. Avoid repeated freeze/thaw cycles.

Expiry Date: 12 months



Western Blotting

Image 1. Mouse stomach lysates probed with C1orf172 Polyclonal Antibody, unconjugated at 1:300 overnight at 4°C followed by a conjugated secondary antibody at 1:10000 for 90 minutes at 37°C.