

Datasheet for ABIN1387209

anti-WIPF2 antibody**2** Images[Go to Product page](#)

Overview

Quantity:	100 µL
Target:	WIPF2
Reactivity:	Human, Mouse, Rat
Host:	Rabbit
Clonality:	Polyclonal
Conjugate:	This WIPF2 antibody is un-conjugated
Application:	Western Blotting (WB), Immunohistochemistry (Paraffin-embedded Sections) (IHC (p)), Immunofluorescence (Paraffin-embedded Sections) (IF (p))

Product Details

Immunogen:	KLH conjugated synthetic peptide derived from human WIPF2
Isotype:	IgG
Cross-Reactivity:	Human, Mouse, Rat
Purification:	Purified by Protein A.

Target Details

Target:	WIPF2
Alternative Name:	WIPF2 (WIPF2 Products)
Background:	Synonyms: WAS/WASL interacting protein family member 2, WASP binding protein, WASP interacting protein related protein, WICH, WIP and CR16 homologous protein, WIP related protein, WIPF 2, WIR, WIPF2_HUMAN.

Target Details

Background: WIRE, also known as WIPF2 (WAS/WASL interacting protein family, member 2) or WICH, is a 440 amino acid protein that localizes to both the cytoplasm and the cytoskeleton and contains one WH2 domain. Expressed ubiquitously with highest expression in colon, brain, lung and stomach, WIRE functions as an N-WASP-interacting protein that plays an important role in the organization and mobilization of the Actin cytoskeleton. Additionally, WIRE is involved in the formation of cell surface protrusions and may also provide a link between the cytoskeletal machinery and PDGF-B receptors. Multiple alternatively spliced isoforms of WIRE exist and are encoded by a gene that maps to human chromosome 17.

Gene ID: 147179

Application Details

Application Notes: WB 1:300-5000
IHC-P 1:200-400
IF(IHC-P) 1:50-200

Restrictions: For Research Use only

Handling

Format: Liquid

Concentration: 1 µg/µL

Buffer: 0.01M TBS(pH 7.4) with 1 % BSA, 0.02 % Proclin300 and 50 % Glycerol.

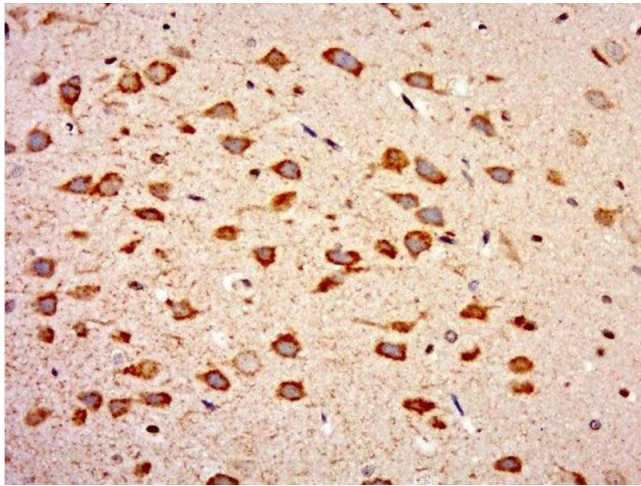
Preservative: ProClin

Precaution of Use: This product contains ProClin: a POISONOUS AND HAZARDOUS SUBSTANCE, which should be handled by trained staff only.

Storage: 4 °C,-20 °C

Storage Comment: Shipped at 4°C. Store at -20°C for one year. Avoid repeated freeze/thaw cycles.

Expiry Date: 12 months



Immunohistochemistry (Paraffin-embedded Sections)

Image 1. Paraformaldehyde-fixed, paraffin embedded rat brain tissue, Antigen retrieval by boiling in sodium citrate buffer(pH6) for 15min, Block endogenous peroxidase by 3% hydrogen peroxide for 30 minutes, Blocking buffer (normal goat serum) at 37°C for 20min, Antibody incubation with Rabbit Anti-WIPF2 Polyclonal Antibody, Unconjugated at 1:500 overnight at 4°C, followed by a conjugated secondary and DAB staining

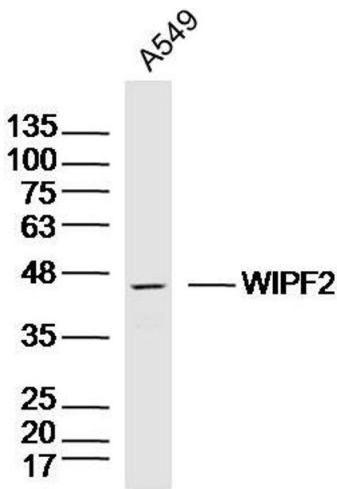


Image 2. A549 lysates probed with WIPF2 Polyclonal Antibody, Unconjugated at 1:300 dilution and 4°C overnight incubation. Followed by conjugated secondary antibody incubation at 1:10000 for 60 min at 37°C.