

Datasheet for ABIN1387242
anti-SNAP91 antibody (AA 201-300)[Go to Product page](#)

1 Image

Overview

Quantity:	100 µL
Target:	SNAP91
Binding Specificity:	AA 201-300
Reactivity:	Rat
Host:	Rabbit
Clonality:	Polyclonal
Conjugate:	This SNAP91 antibody is un-conjugated
Application:	Western Blotting (WB), ELISA, Immunofluorescence (Cultured Cells) (IF (cc)), Immunofluorescence (Paraffin-embedded Sections) (IF (p)), Immunohistochemistry (Frozen Sections) (IHC (fro)), Immunohistochemistry (Paraffin-embedded Sections) (IHC (p)), Immunocytochemistry (ICC)

Product Details

Immunogen:	KLH conjugated synthetic peptide derived from human AP180
Isotype:	IgG
Cross-Reactivity:	Rat
Predicted Reactivity:	Human,Mouse,Dog,Cow,Sheep,Pig,Horse,Chicken
Purification:	Purified by Protein A.

Target Details

Target:	SNAP91
---------	--------

Target Details

Alternative Name:	SNAP91/AP180 (SNAP91 Products)
Background:	<p>Synonyms: AP 180, AP3, Assembly Protein 180 kDa, Assembly Protein AP180, CALM, Clathrin coat assembly protein, Clathrin coat assembly protein AP180, Clathrin coat associated protein AP180, DKFZp781O051, F120, KIAA0656, NP185, pp155, SNAP 91, SNAP91, 91 kDa synaptosomal associated protein, Synaptosomal associated protein 91 kD homolog, Synaptosomal associated protein 91 kDa homolog, AP180_HUMAN.</p> <p>Background: Clathrin-coated pits and vesicles are assembled for receptor-mediated endocytosis through interaction with Clathrin associated protein complexes. Vesicle transport is mediated from the trans-Golgi network by the adapter complex AP-1 and from the plasma membrane by the AP-2 complex. The AP-1 and AP-2 adapter protein complexes consist of Clathrin binding Adaptin proteins (g and b1 for AP-1, a and b2 for AP-2) and two smaller subunits known as AP50 and AP17. The a and b Adaptin chains have a similar two-domain organization with C-terminal domains that vary in both sequence and length. a-Adaptin splice variants A and C display variable relative expression levels and differential distribution in different tissues. AP-3 (also designated AP180 or F1-20) is a synapse-specific Clathrin assembly protein. The protein CALM (Clathrin assembly protein lymphoid myeloid leukemia) is highly homologous to AP180 and may also be involved in Clathrin assembly.</p>

Application Details

Application Notes:	WB 1:300-5000 ELISA 1:500-1000 IHC-P 1:200-400 IHC-F 1:100-500 IF(IHC-P) 1:50-200 IF(IHC-F) 1:50-200 IF(ICC) 1:50-200 ICC 1:100-500
Restrictions:	For Research Use only

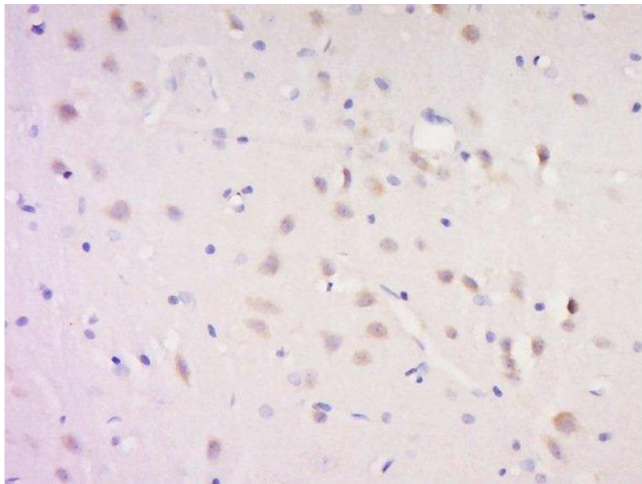
Handling

Format:	Liquid
Concentration:	1 µg/µL
Buffer:	0.01M TBS(pH 7.4) with 1 % BSA, 0.02 % Proclin300 and 50 % Glycerol.

Handling

Preservative:	ProClin
Precaution of Use:	This product contains ProClin: a POISONOUS AND HAZARDOUS SUBSTANCE, which should be handled by trained staff only.
Storage:	4 °C,-20 °C
Storage Comment:	Shipped at 4°C. Store at -20°C for one year. Avoid repeated freeze/thaw cycles.
Expiry Date:	12 months

Images



Immunohistochemistry (Paraffin-embedded Sections)

Image 1. Paraformaldehyde-fixed, paraffin embedded rat brain, Antigen retrieval by boiling in sodium citrate buffer (pH6) for 15min, Block endogenous peroxidase by 3% hydrogen peroxide for 30 minutes, Blocking buffer (normal goat serum) at 37°C for 20min, Antibody incubation with Rabbit Anti-SNAP91/AP180 Polyclonal Antibody, Unconjugated at 1:500 overnight at 4°C, followed by a conjugated secondary and DAB staining.