



[Go to Product page](#)

Datasheet for ABIN1387244

## anti-OPA1 antibody (AA 651-750)

1 Image

2 Publications

### Overview

Quantity:	100 µL
Target:	OPA1
Binding Specificity:	AA 651-750
Reactivity:	Human, Mouse, Rat, Chicken, Rabbit
Host:	Rabbit
Clonality:	Polyclonal
Conjugate:	This OPA1 antibody is un-conjugated
Application:	Western Blotting (WB), ELISA, Immunofluorescence (Cultured Cells) (IF (cc)), Immunofluorescence (Paraffin-embedded Sections) (IF (p)), Immunohistochemistry (Paraffin-embedded Sections) (IHC (p)), Immunocytochemistry (ICC), Immunohistochemistry (Frozen Sections) (IHC (fro))

### Product Details

Immunogen:	KLH conjugated synthetic peptide derived from human OPA1
Isotype:	IgG
Cross-Reactivity:	Chicken, Human, Mouse, Rabbit, Rat
Predicted Reactivity:	Dog,Cow,Sheep,Pig,Horse
Purification:	Purified by Protein A.

### Target Details

Target:	OPA1
---------	------

## Target Details

---

Alternative Name:	OPA1 ( <a href="#">OPA1 Products</a> )
Background:	<p>Synonyms: SP17, NYD-SP17, Coiled-coil domain-containing protein 54, Testis development protein NYD-SP17, CCDC54</p> <p>Background: OPA1 is a 120 kDa protein belonging to the dynamin family. The OPA1 gene has been localized to 3q29. The gene is targeted to mitochondria and is involved in mitochondrial biogenesis. Defects in OPA1 are a cause of optic atrophy type 1. OPA1 is mostly expressed in retina but can also be expressed in brain, testis, heart and skeletal muscle.</p>
Gene ID:	84692
UniProt:	<a href="#">Q8NEL0</a>
Pathways:	<a href="#">Tube Formation</a>

## Application Details

---

Application Notes:	WB 1:300-5000 ELISA 1:500-1000 IHC-P 1:200-400 IHC-F 1:100-500 IF(IHC-P) 1:50-200 IF(IHC-F) 1:50-200 IF(ICC) 1:50-200 ICC 1:100-500
Restrictions:	For Research Use only

## Handling

---

Format:	Liquid
Concentration:	1 µg/µL
Buffer:	0.01M TBS( pH 7.4) with 1 % BSA, 0.02 % Proclin300 and 50 % Glycerol.
Preservative:	ProClin
Precaution of Use:	This product contains ProClin: a POISONOUS AND HAZARDOUS SUBSTANCE, which should be handled by trained staff only.
Storage:	4 °C,-20 °C
Storage Comment:	Shipped at 4°C. Store at -20°C for one year. Avoid repeated freeze/thaw cycles.

## Handling

---

Expiry Date: 12 months

## Publications

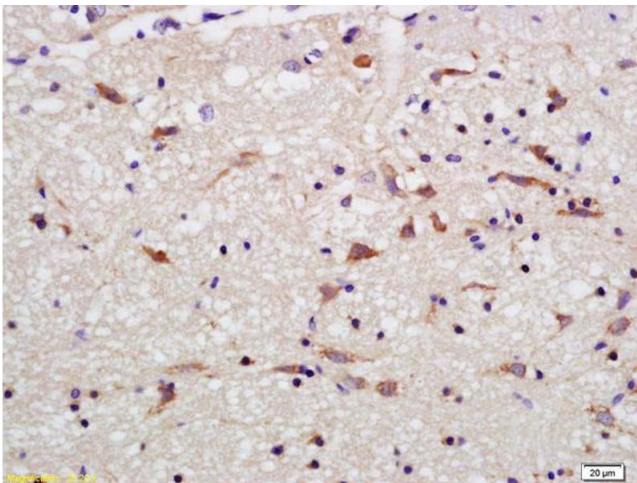
---

Product cited in: Hui, Lu, Han, Zhou, Liu, Li, Jin: "Resveratrol improves mitochondrial function in the remnant kidney from 5/6 nephrectomized rats." in: **Acta histochemica**, Vol. 119, Issue 4, pp. 392-399, (2017) ([PubMed](#)).

Ku, Ji, Zhang, Li, Sang: "PM2.5, SO2 and NO2 co-exposure impairs neurobehavior and induces mitochondrial injuries in the mouse brain." in: **Chemosphere**, Vol. 163, pp. 27-34, (2016) ([PubMed](#)).

## Images

---



### Immunohistochemistry

**Image 1.** Formalin-fixed and paraffin embedded rat brain labeled with Rabbit Anti OPA1 Polyclonal Antibody, Unconjugated (ABIN1387244) at 1:200 followed by conjugation to the secondary antibody and DAB staining