



[Go to Product page](#)

Datasheet for ABIN1387263

anti-Neuropeptide antibody (AA 91-133)

2 Images

Overview

Quantity:	100 µL
Target:	Neuropeptide
Binding Specificity:	AA 91-133
Reactivity:	Human, Mouse
Host:	Rabbit
Clonality:	Polyclonal
Conjugate:	This Neuropeptide antibody is un-conjugated
Application:	Western Blotting (WB), Immunofluorescence (Cultured Cells) (IF (cc)), Immunofluorescence (Paraffin-embedded Sections) (IF (p)), Immunohistochemistry (Paraffin-embedded Sections) (IHC (p)), ELISA, Immunohistochemistry (Frozen Sections) (IHC (fro)), Immunocytochemistry (ICC)

Product Details

Immunogen:	KLH conjugated synthetic peptide derived from human QRFP
Isotype:	IgG
Cross-Reactivity:	Human, Mouse
Predicted Reactivity:	Rat,Cow,Sheep,Pig,Horse
Purification:	Purified by Protein A.

Target Details

Target:	Neuropeptide
---------	--------------

Target Details

Alternative Name:	QRFP (Neuropeptide Products)
Background:	<p>Synonyms: 26RFa, Neuropeptide RF-amide, OX26_HUMAN, pyroglutamylated RFamide peptide, P518, Pyroglutamylated arginine-phenylalanine-amide peptide, QRF-amide, Qrfp.</p> <p>Background: QRFP is a 136 amino acid secreted protein that is widely expressed in the brain with highest expression levels in the cerebellum, medulla, pituitary, retina, vestibular nucleus and white matter. Also expressed in the bladder, colon, coronary artery, parathyroid gland, prostate, testis and thyroid, QRFP is a member of the RFamide neuropeptide family. QRFP may be involved in aldosterone secretion by the adrenal gland and is also implicated in stimulating metabolic rate, locomotor activity and increasing blood pressure. Considered a ligand for the G-protein coupled receptor GPR103, QRFP may have orexigenic activity, thereby acting as an appetite stimulant. The gene encoding QRFP is located on human chromosome 9, which consists of about 145 million bases, comprises roughly 4 % of the human genome and encodes nearly 900 genes.</p>

Application Details

Application Notes:	WB 1:300-5000 ELISA 1:500-1000 IHC-P 1:200-400 IHC-F 1:100-500 IF(IHC-P) 1:50-200 IF(IHC-F) 1:50-200 IF(ICC) 1:50-200 ICC 1:100-500
--------------------	--

Restrictions:	For Research Use only
---------------	-----------------------

Handling

Format:	Liquid
Concentration:	1 µg/µL
Buffer:	0.01M TBS(pH 7.4) with 1 % BSA, 0.02 % Proclin300 and 50 % Glycerol.
Preservative:	ProClin
Precaution of Use:	This product contains ProClin: a POISONOUS AND HAZARDOUS SUBSTANCE, which should be handled by trained staff only.

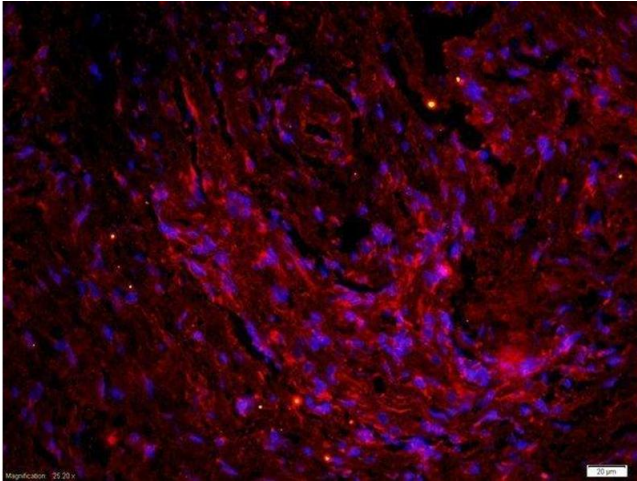
Handling

Storage: 4 °C, -20 °C

Storage Comment: Shipped at 4°C. Store at -20°C for one year. Avoid repeated freeze/thaw cycles.

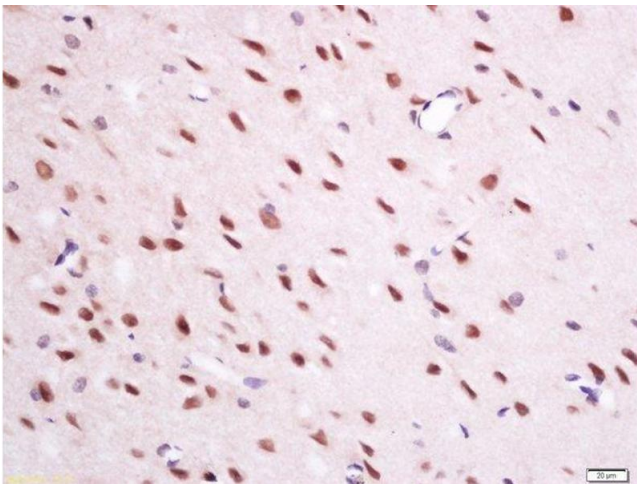
Expiry Date: 12 months

Images



Immunofluorescence (Paraffin-embedded Sections)

Image 1. paraformaldehyde-fixed, paraffin embedded human neurofibroma tissue; Antigen retrieval by boiling in sodium citrate buffer(pH6) for 15min; Block endogenous peroxidase by 3% hydrogen peroxide for 30 minutes; Blocking buffer (normal goat serum) at 37°C for 20min; Antibody incubation with Rabbit Anti-QRFP Polyclonal Antibody, Unconjugated at 1:200 overnight at 4°C, followed by a conjugated secondary and DAB staining



Immunohistochemistry (Paraffin-embedded Sections)

Image 2. paraformaldehyde-fixed, paraffin embedded mouse brain tissue; Antigen retrieval by boiling in sodium citrate buffer(pH6) for 15min; Block endogenous peroxidase by 3% hydrogen peroxide for 30 minutes; Blocking buffer (normal goat serum) at 37°C for 20min; Antibody incubation with Rabbit Anti-QRFP Polyclonal Antibody, Unconjugated at 1:200 overnight at 4°C, followed by a conjugated secondary and DAB staining