

Datasheet for ABIN1387271
anti-HES6 antibody (AA 1-80)[Go to Product page](#)

1 Image

Overview

Quantity:	100 µL
Target:	HES6
Binding Specificity:	AA 1-80
Reactivity:	Human
Host:	Rabbit
Clonality:	Polyclonal
Conjugate:	This HES6 antibody is un-conjugated
Application:	Western Blotting (WB), ELISA, Immunohistochemistry (Paraffin-embedded Sections) (IHC (p)), Immunocytochemistry (ICC), Immunohistochemistry (Frozen Sections) (IHC (fro)), Immunofluorescence (Cultured Cells) (IF (cc)), Immunofluorescence (Paraffin-embedded Sections) (IF (p))

Product Details

Immunogen:	KLH conjugated synthetic peptide derived from human HES6
Isotype:	IgG
Cross-Reactivity:	Human
Predicted Reactivity:	Mouse,Rat,Cow,Pig
Purification:	Purified by Protein A.

Target Details

Target:	HES6
---------	------

Target Details

Alternative Name:	HES6 (HES6 Products)
Background:	<p>Synonyms: HES-6, bHLHb41, bHLHc23, C-HAIRY1, Transcription cofactor HES-6, Class B basic helix-loop-helix protein 41, Hairy and enhancer of split 6, HES6</p> <p>Background: Does not bind DNA itself but suppresses both HES1-mediated N box-dependent transcriptional repression and binding of HES1 to E box sequences. Also suppresses HES1-mediated inhibition of the heterodimer formed by ASCL1/MASH1 and TCF3/E47, allowing ASCL1 and TCF3 to up-regulate transcription in its presence. Promotes cell differentiation (By similarity).</p>
Gene ID:	55502
UniProt:	Q96HZ4

Application Details

Application Notes:	<p>WB 1:300-5000</p> <p>ELISA 1:500-1000</p> <p>IHC-P 1:200-400</p> <p>IHC-F 1:100-500</p> <p>IF(IHC-P) 1:50-200</p> <p>IF(IHC-F) 1:50-200</p> <p>IF(ICC) 1:50-200</p> <p>ICC 1:100-500</p>
Restrictions:	For Research Use only

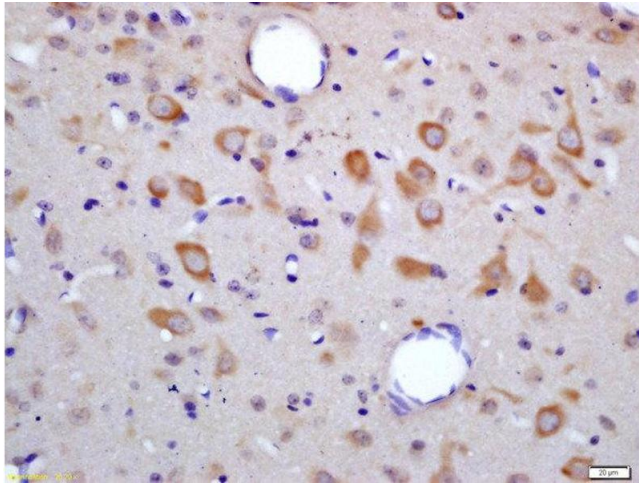
Handling

Format:	Liquid
Concentration:	1 µg/µL
Buffer:	0.01M TBS(pH 7.4) with 1 % BSA, 0.02 % Proclin300 and 50 % Glycerol.
Preservative:	ProClin
Precaution of Use:	This product contains ProClin: a POISONOUS AND HAZARDOUS SUBSTANCE, which should be handled by trained staff only.
Storage:	4 °C,-20 °C
Storage Comment:	Shipped at 4°C. Store at -20°C for one year. Avoid repeated freeze/thaw cycles.

Handling

Expiry Date: 12 months

Images



Immunohistochemistry (Paraffin-embedded Sections)

Image 1. Formalin-fixed and paraffin embedded rat brain labeled with Rabbit Anti-HES6 Polyclonal Antibody, Unconjugated (ABIN1387271) at 1:200 followed by conjugation to the secondary antibody and DAB staining