

Datasheet for ABIN1387289
anti-PTPRN antibody (AA 501-600)[Go to Product page](#)

1 Image

Overview

Quantity:	100 µL
Target:	PTPRN
Binding Specificity:	AA 501-600
Reactivity:	Rat
Host:	Rabbit
Clonality:	Polyclonal
Conjugate:	This PTPRN antibody is un-conjugated
Application:	ELISA, Flow Cytometry (FACS), Immunohistochemistry (Paraffin-embedded Sections) (IHC (p)), Immunohistochemistry (Frozen Sections) (IHC (fro)), Immunofluorescence (Cultured Cells) (IF (cc)), Immunofluorescence (Paraffin-embedded Sections) (IF (p)), Immunocytochemistry (ICC)

Product Details

Immunogen:	KLH conjugated synthetic peptide derived from human TPIA2
Isotype:	IgG
Cross-Reactivity:	Rat
Predicted Reactivity:	Human,Mouse,Cow,Sheep,Pig
Purification:	Purified by Protein A.

Target Details

Target:	PTPRN
---------	-------

Target Details

Alternative Name:	TPIA2/PTPRN (PTPRN Products)
Background:	<p>Synonyms: RPTPN, CA 512, IA 2, IA 2/PTP, IA2, IA2/PTP, ICA 3, ICA 512, ICA3, ICA512, Islet cell antigen 2, Islet cell antigen 512, Islet cell autoantigen 3, Protein tyrosine phosphatase like N, Protein tyrosine phosphatase like N precursor, Protein tyrosine phosphatase receptor type N, PTP IA 2, PTP IA-2, PTP IA2, PTPIA 2, PTPN, Ptpn, PTPRN protein, PTPRN_HUMAN, R PTP N, R-PTP-N, Receptor type tyrosine protein phosphatase like N, Receptor-type tyrosine-protein phosphatase-like N.</p> <p>Background: Implicated in neuroendocrine secretory processes. May be involved in processes specific for neurosecretory granules, such as their biogenesis, trafficking or regulated exocytosis or may have a general role in neuroendocrine functions. Seems to lack intrinsic enzyme activity. May play a role in the regulation of secretory granules via its interaction with SNTB2.</p>

Application Details

Application Notes:	ELISA 1:500-1000 FCM 1:20-100 IHC-P 1:200-400 IHC-F 1:100-500 IF(IHC-P) 1:50-200 IF(IHC-F) 1:50-200 IF(ICC) 1:50-200 ICC 1:100-500
Restrictions:	For Research Use only

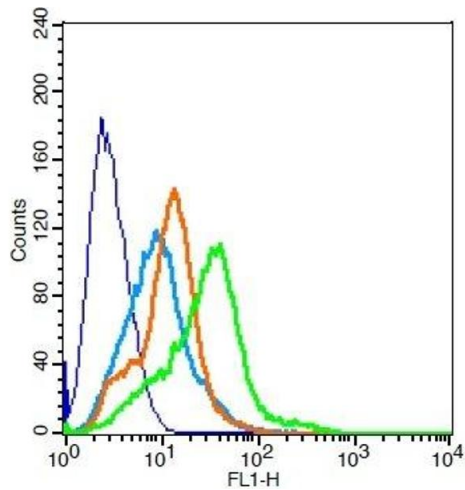
Handling

Format:	Liquid
Concentration:	1 µg/µL
Buffer:	0.01M TBS(pH 7.4) with 1 % BSA, 0.02 % Proclin300 and 50 % Glycerol.
Preservative:	ProClin
Precaution of Use:	This product contains ProClin: a POISONOUS AND HAZARDOUS SUBSTANCE, which should be handled by trained staff only.
Storage:	4 °C, -20 °C

Handling

Storage Comment:	Shipped at 4°C. Store at -20°C for one year. Avoid repeated freeze/thaw cycles.
Expiry Date:	12 months

Images



Flow Cytometry

Image 1. RSC96 probed with TPIA2/PTPRN Polyclonal Antibody, Unconjugated () at 3ug for 30 minutes followed by incubation with a conjugated secondary -FITC) (green) for 30 minutes compared to control cells (blue), secondary only (light blue) and isotype control (orange).