

Datasheet for ABIN1387314
anti-F4/80 antibody (AA 732-747)[4 Images](#)[3 Publications](#)[Go to Product page](#)

Overview

Quantity:	100 µL
Target:	F4/80 (EMR1)
Binding Specificity:	AA 732-747
Reactivity:	Mouse, Human, Rat
Host:	Rabbit
Clonality:	Polyclonal
Conjugate:	This F4/80 antibody is un-conjugated
Application:	Flow Cytometry (FACS), Western Blotting (WB), Immunohistochemistry (Paraffin-embedded Sections) (IHC (p)), Immunofluorescence (Paraffin-embedded Sections) (IF (p))

Product Details

Immunogen:	KLH conjugated synthetic peptide derived from human EMR1
Isotype:	IgG
Cross-Reactivity:	Human, Mouse, Rat
Purification:	Purified by Protein A.

Target Details

Target:	F4/80 (EMR1)
Alternative Name:	Emr1 (EMR1 Products)
Background:	Synonyms: TM7LN3, EGF-like module-containing mucin-like hormone receptor-like 1, EGF-like

Target Details

module receptor 1, EMR1 hormone receptor, EMR1, Adhesion G Protein-Coupled Receptor E1, ADGRE1, Cell surface glycoprotein F4/80

Background: The epidermal growth factor (EGF)-TM7 family constitutes a group of class B G-protein coupled receptors, which includes CD97, EMR1 (EGF-like molecule containing mucin-like hormone receptor 1, designated F4/80 in mouse), EMR2, EMR3, FIRE, and ETL (13). These family members are characterized by an extended extracellular region with several N-terminal EGF domains, and are predominantly expressed on cells of the immune system (13). The EGF-TM7 protein family are encoded by a gene cluster on human chromosome 19p13 (1,3,4). The F4/80 Molecule is solely expressed on the surface of macrophages and serves as a marker for mature macrophage tissues, including Kupffer cells in liver, splenic red pulp macrophages, brain microglia, gut lamina propria, and Langerhans cells in the skin (1). F4/80/EMR1 undergoes extensive N-linked glycosylation as well as some O-linked glycosylation (5,6). The function of F4/80/EMR1 is unclear, but it is speculated to be involved in macrophage adhesion events, cell migration, or as a G-protein coupled signaling component of macrophages.

Gene ID: 2015

UniProt: [Q14246](#)

Application Details

Application Notes: WB 1:100-1000
FCM 1:20-100
IHC-P 1:100-500
IF(IHC-P) 1:50-200

Restrictions: For Research Use only

Handling

Format: Liquid

Concentration: 1 µg/µL

Buffer: Aqueous buffered solution containing 1 % BSA, 50 % glycerol and 0.09 % sodium azide.

Preservative: Sodium azide

Precaution of Use: This product contains Sodium azide: a POISONOUS AND HAZARDOUS SUBSTANCE, which should be handled by trained staff only.

Storage: -20 °C

Handling

Storage Comment: Store at -20°C for 12 months.

Expiry Date: 12 months

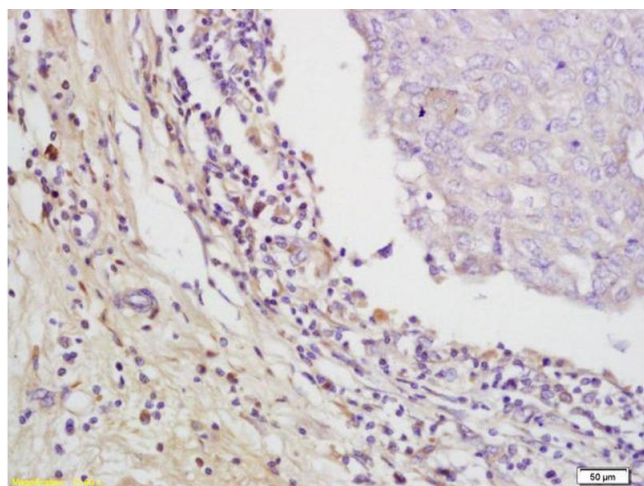
Publications

Product cited in: Xue, Han, Ma, Wu, Qin, Liu, Hu, Hong, Hou: "Effect of Microenvironment on Differentiation of Human Umbilical Cord Mesenchymal Stem Cells into Hepatocytes In Vitro and In Vivo." in: **BioMed research international**, Vol. 2016, pp. 8916534, (2016) ([PubMed](#)).

Tsang, Huang, Yang, Chi, Chiang, Wang, Andocs, Szasz, Li, Chi: "Improving immunological tumor microenvironment using electro-hyperthermia followed by dendritic cell immunotherapy." in: **BMC cancer**, Vol. 15, pp. 708, (2015) ([PubMed](#)).

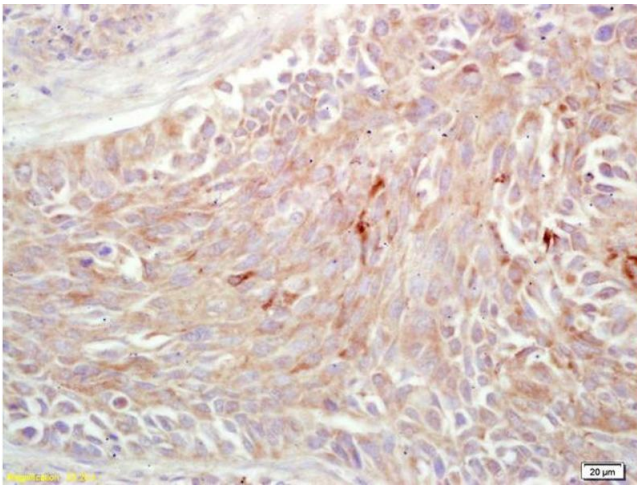
Kwan, Yeung, Liu, Wong, Shum, Lam, Cheng, Cheung, To: "Silver nanoparticles alter proteoglycan expression in the promotion of tendon repair." in: **Nanomedicine : nanotechnology, biology, and medicine**, Vol. 10, Issue 7, pp. 1375-83, (2014) ([PubMed](#)).

Images



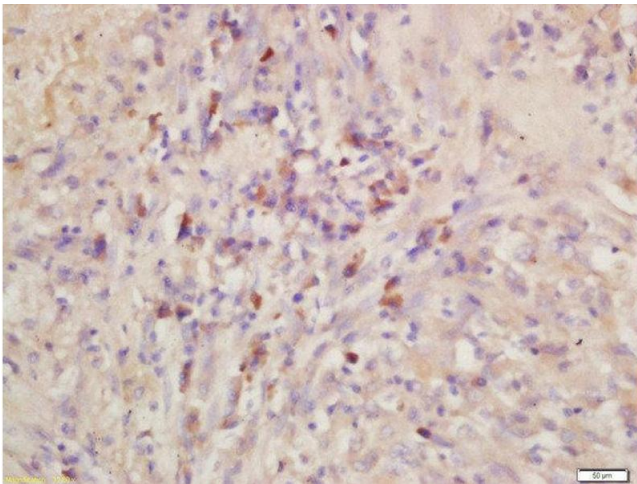
Immunohistochemistry

Image 1. Formalin-fixed and paraffin embedded human breast carcinoma labeled with Rabbit Anti EMR1 Polyclonal Antibody, Unconjugated (ABIN1387314) at 1:200 followed by conjugation to the secondary antibody and DAB staining



Immunohistochemistry

Image 2. Formalin-fixed and paraffin embedded human lung carcinoma labeled with Rabbit Anti EMR1 Polyclonal Antibody, Unconjugated (ABIN1387314) at 1:200 followed by conjugation to the secondary antibody and DAB staining



Immunohistochemistry (Paraffin-embedded Sections)

Image 3. Formalin-fixed and paraffin embedded human lung carcinoma labeled with Rabbit Anti-EMR1 Polyclonal Antibody, Unconjugated at 1:200 followed by conjugation to the secondary antibody and DAB staining

Please check the [product details page](#) for more images. Overall 4 images are available for ABIN1387314.