

Datasheet for ABIN1387352  
**anti-NPY5R antibody (AA 1-100)**[Go to Product page](#)

## 1 Image

## Overview

Quantity:	100 µL
Target:	NPY5R
Binding Specificity:	AA 1-100
Reactivity:	Human, Mouse
Host:	Rabbit
Clonality:	Polyclonal
Conjugate:	This NPY5R antibody is un-conjugated
Application:	Western Blotting (WB), ELISA

## Product Details

Immunogen:	KLH conjugated synthetic peptide derived from human NPY5R
Isotype:	IgG
Cross-Reactivity:	Human, Mouse
Predicted Reactivity:	Dog,Cow,Horse,Rabbit
Purification:	Purified by Protein A.

## Target Details

Target:	NPY5R
Alternative Name:	NPY5R ( <a href="#">NPY5R Products</a> )
Background:	Synonyms: Neuropeptide Y receptor type 5, Neuropeptide Y receptor Y5, NPY 5R, NPY R5, NPY

## Target Details

Y5, NPY Y5 receptor, NPY-Y5 receptor, NPY5 R, NPY5-R, NPY5R, NPY5R\_HUMAN, NPYR 5, NPYR5, NPY Y5, NPY Y5, NPY Y5-R, Y5 receptor.

Background: Pancreatic polypeptide (PP), neuropeptide Y (NPY), and peptide YY (PYY) are related 36-amino acid hormones. A number of structurally related receptors for these peptides have been isolated, NPY1-R, NPY2-R, NPY3-R, NPY4-R, NPY5-R, and NPY6-R. NPY4-R is expressed in several human tissues, including brain, coronary artery, and ileum. NPY4-R maps to human chromosome 10q11.2. NPY-5R, isolated from rat hypothalamus, encodes a 456-amino acid protein with less than 35 % overall identity to known Y-type receptors. The human NPY5-R sequence is nearly identical to, but in the opposite orientation from, that of the human NPY1-R sequence. NPY5-R localizes to the paraventricular hypothalamic nucleus, the lateral hypothalamus, and other locations consistent with a role in the control of feeding behavior. The gene which encodes NPY5-R maps to human chromosome 4q32.2. NPY6-R is abundantly expressed in human heart and skeletal muscle and the gene which encodes NPY6-R maps to human chromosome 5q31.

Pathways: [Feeding Behaviour](#)

## Application Details

Application Notes: WB 1:300-5000  
ELISA 1:500-1000

Restrictions: For Research Use only

## Handling

Format: Liquid

Concentration: 1 µg/µL

Buffer: 0.01M TBS( pH 7.4) with 1 % BSA, 0.02 % Proclin300 and 50 % Glycerol.

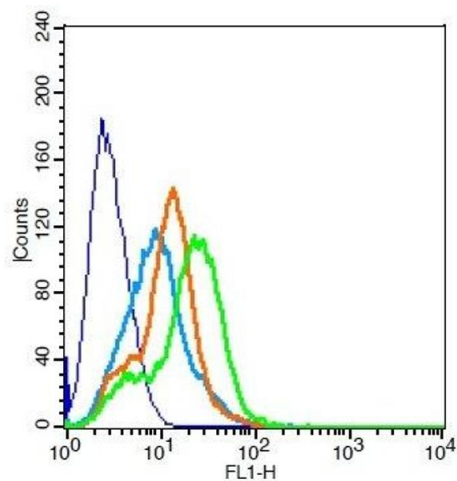
Preservative: ProClin

Precaution of Use: This product contains ProClin: a POISONOUS AND HAZARDOUS SUBSTANCE, which should be handled by trained staff only.

Storage: 4 °C, -20 °C

Storage Comment: Shipped at 4°C. Store at -20°C for one year. Avoid repeated freeze/thaw cycles.

Expiry Date: 12 months



### Flow Cytometry

**Image 1.** RSC96 probed with NPY5R Polyclonal Antibody, Unconjugated at 3 ug for 30 minutes followed by incubation with a conjugated secondary -FITC (green) for 30 minutes compared to control cells (blue), secondary only (light blue) and isotype control (orange).