



[Go to Product page](#)

Datasheet for ABIN1387355

anti-COL2 antibody (AA 1401-1487)

1 Image

1 Publication

Overview

Quantity:	100 µL
Target:	COL2
Binding Specificity:	AA 1401-1487
Reactivity:	Human, Rat, Rabbit
Host:	Rabbit
Clonality:	Polyclonal
Conjugate:	This COL2 antibody is un-conjugated
Application:	Western Blotting (WB), ELISA, Immunohistochemistry (Paraffin-embedded Sections) (IHC (p))

Product Details

Immunogen:	KLH conjugated synthetic peptide derived from human Collagen II
Isotype:	IgG
Cross-Reactivity:	Human, Rabbit, Rat
Predicted Reactivity:	Mouse,Chicken
Purification:	Purified by Protein A.

Target Details

Target:	COL2
Alternative Name:	Collagen 2 (COL2 Products)
Background:	Synonyms: Collagen II alpha 1, COL2A1, COL2A1 protein, collagen, type II, alpha 1, collagen

Target Details

alpha-1II, type II collagen, alpha-1 type II collagen, alpha1 type II collagen, Col2a1, AOM, Cartilage collagen, Chondrocalcin, COL11A3, Collagen alpha 1II chain precursor, Collagen type II alpha 1 primary osteoarthritis spondyloepiphyseal dysplasia congenital, MGC131516, SEDC.

Background: Collagens are highly conserved throughout evolution and are characterized by an uninterrupted "Glycine-X-Y" triplet repeat that is a necessary part of the triple helical structure. For these reasons it is often extremely difficult to generate with specificities to collagens. The development of type specific is dependent on NON DENATURED three dimensional epitopes. This may result in diminished reactivity of some with denatured collagen or formalin fixed, paraffin embedded tissues. Type II collagen is a fibrillar collagen found in cartilage and the vitreous humor of the eye. Collagen type II is essential for the normal embryonic development of the skeleton, for linear growth and for the ability of cartilage to resist compressive forces. Mutations in this gene are associated with achondrogenesis, chondrodysplasia, early onset familial osteoarthritis, SED congenita, Langer Saldino achondrogenesis, Kniest dysplasia, Stickler syndrome type I, and spondyloepimetaphyseal dysplasia Strudwick type. In addition, defects in processing chondrocalcin, a calcium binding protein that is the C propeptide of this collagen molecule, are also associated with chondrodysplasia. There are two transcripts identified for this gene.

Application Details

Application Notes: WB 1:300-5000
 ELISA 1:500-1000
 IHC-P 1:200-400

Restrictions: For Research Use only

Handling

Format: Liquid

Concentration: 1 µg/µL

Buffer: 0.01M TBS(pH 7.4) with 1 % BSA, 0.02 % Proclin300 and 50 % Glycerol.

Preservative: ProClin

Precaution of Use: This product contains ProClin: a POISONOUS AND HAZARDOUS SUBSTANCE, which should be handled by trained staff only.

Storage: 4 °C,-20 °C

Handling

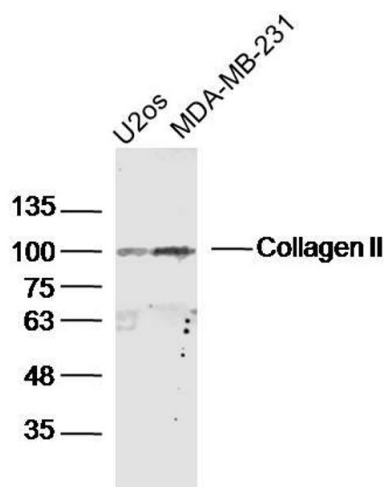
Storage Comment: Shipped at 4°C. Store at -20°C for one year. Avoid repeated freeze/thaw cycles.

Expiry Date: 12 months

Publications

Product cited in: Yang, Lu, Guo: "Platelet-rich plasma protects rat chondrocytes from interleukin-1 β -induced apoptosis." in: **Molecular medicine reports**, Vol. 14, Issue 5, pp. 4075-4082, (2016) ([PubMed](#)).

Images



Western Blotting

Image 1. Lane 1: U2os lysates Lane 2: MDA-MB-231 lysates probed with Collagen II Polyclonal Antibody, Unconjugated at 1:300 dilution and 4°C overnight incubation. Followed by conjugated secondary antibody incubation at 1:10000 for 60 min at 37°C.