

Datasheet for ABIN1387385  
**anti-SULT4A1 antibody (AA 221-284)**[Go to Product page](#)

## 1 Image

## Overview

Quantity:	100 µL
Target:	SULT4A1
Binding Specificity:	AA 221-284
Reactivity:	Human, Rat
Host:	Rabbit
Clonality:	Polyclonal
Conjugate:	This SULT4A1 antibody is un-conjugated
Application:	Western Blotting (WB), ELISA, Immunofluorescence (Cultured Cells) (IF (cc)), Immunofluorescence (Paraffin-embedded Sections) (IF (p)), Immunocytochemistry (ICC), Immunohistochemistry (Frozen Sections) (IHC (fro)), Immunohistochemistry (Paraffin-embedded Sections) (IHC (p))

## Product Details

Immunogen:	KLH conjugated synthetic peptide derived from human SULT4A1
Isotype:	IgG
Cross-Reactivity:	Human, Rat
Predicted Reactivity:	Mouse,Dog,Cow,Sheep,Pig,Horse,Rabbit
Purification:	Purified by Protein A.

## Target Details

Target:	SULT4A1
---------	---------

## Target Details

Alternative Name:	SULT4A1 ( <a href="#">SULT4A1 Products</a> )
Background:	<p>Synonyms: BR STL 1, Brain sulfotransferase like protein, Brain sulphotransferase like, BRSTL1, hBR STL 1, hBR STL, Nervous system cytosolic sulfotransferase, Nervous system sulfotransferase, NST, Sulfotransferase 4A1, Sulfotransferase family 4A member 1, Sulfotransferase related protein, SULTX3, ST4A1_HUMAN.</p> <p>Background: Sulfation is an essential conjugation reaction that increases the water solubility of many compounds, thereby influencing their renal excretion and also resulting in the formation of active metabolites. SULT4A1 (sulfotransferase family 4A, member 1), whose alternative names include brain sulfotransferase-like protein, nervous system sulfotransferase, NST, SULTX3, hBR-STL-1, BRSTL1, BR-STL-1, MGC40032 and DJ388M5.3, is a 284 amino acid protein showing cytoplasmic localization. As a member of the sulfotransferase 1 family, SULT4A1 plays a role in elimination of xenobiotics, activation of procarcinogens and regulation of hormones. SULT4A1 is highly expressed in cerebral cortex and frontal lobe, with lower expression in cerebellum, temporal and occipital lobes. Two SULT4A1 isoforms exist to alternative splicing events. The gene encoding SULT4A1 maps to human chromosome 22q13.2, a region which has been implicated in predisposition to schizophrenia.</p>

## Application Details

Application Notes:	WB 1:300-5000 ELISA 1:500-1000 IHC-P 1:200-400 IHC-F 1:100-500 IF(IHC-P) 1:50-200 IF(IHC-F) 1:50-200 IF(ICC) 1:50-200 ICC 1:100-500
Restrictions:	For Research Use only

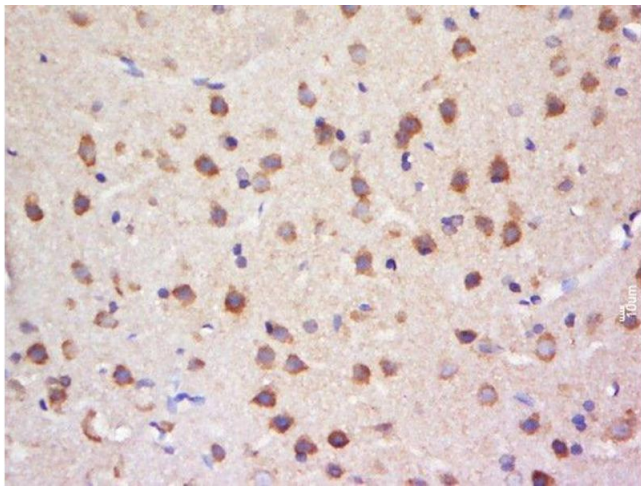
## Handling

Format:	Liquid
Concentration:	1 µg/µL
Buffer:	0.01M TBS( pH 7.4) with 1 % BSA, 0.02 % Proclin300 and 50 % Glycerol.
Preservative:	ProClin

## Handling

Precaution of Use:	This product contains ProClin: a POISONOUS AND HAZARDOUS SUBSTANCE, which should be handled by trained staff only.
Storage:	4 °C,-20 °C
Storage Comment:	Shipped at 4°C. Store at -20°C for one year. Avoid repeated freeze/thaw cycles.
Expiry Date:	12 months

## Images



### Immunohistochemistry (Paraffin-embedded Sections)

**Image 1.** Paraformaldehyde-fixed, paraffin embedded rat brain tissue, Antigen retrieval by boiling in sodium citrate buffer(pH6) for 15min, Block endogenous peroxidase by 3% hydrogen peroxide for 30 minutes, Blocking buffer (normal goat serum) at 37°C for 20min, Antibody incubation with Rabbit Anti-SULT4A1 Polyclonal Antibody, Unconjugated at 1:500 overnight at 4°C, followed by a conjugated secondary and DAB staining