



Datasheet for ABIN1387400

anti-G Protein-Coupled Receptor 126 antibody (AA 741-850)



[Go to Product page](#)

2 Images

Overview

Quantity:	100 µL
Target:	G Protein-Coupled Receptor 126 (GPR126)
Binding Specificity:	AA 741-850
Reactivity:	Mouse
Host:	Rabbit
Clonality:	Polyclonal
Conjugate:	This G Protein-Coupled Receptor 126 antibody is un-conjugated
Application:	ELISA, Immunohistochemistry (Paraffin-embedded Sections) (IHC (p)), Immunofluorescence (Cultured Cells) (IF (cc)), Immunofluorescence (Paraffin-embedded Sections) (IF (p)), Immunohistochemistry (Frozen Sections) (IHC (fro)), Immunocytochemistry (ICC)

Product Details

Immunogen:	KLH conjugated synthetic peptide derived from human G-protein coupled receptor 126
Isotype:	IgG
Cross-Reactivity:	Mouse
Predicted Reactivity:	Human,Rat,Cow,Sheep,Rabbit
Purification:	Purified by Protein A.

Target Details

Target:	G Protein-Coupled Receptor 126 (GPR126)
---------	---

Target Details

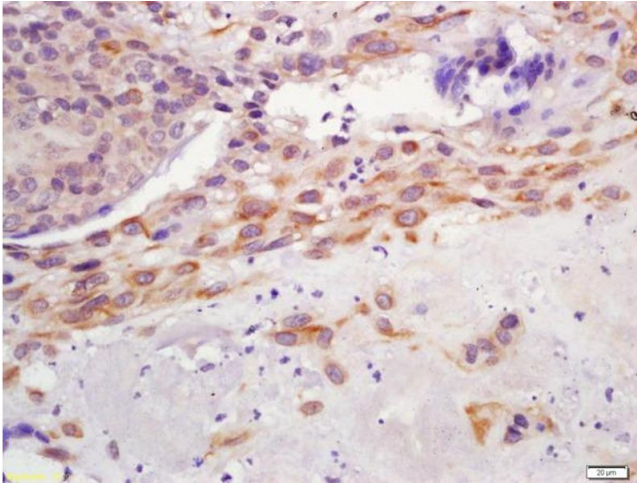
Alternative Name:	GPR126 (GPR126 Products)
Background:	Synonyms: APG1, DREG, VIGR, GPR126, PS1TP2, G-protein coupled receptor 126, Developmentally regulated G-protein-coupled receptor, Vascular inducible G protein-coupled receptor, Adhesion G-protein coupled receptor G6, ADGRG6 Background: Orphan receptor. May be required for normal differentiation of promyelinating Schwann cells and for normal myelination of axons. Signals probably through G-proteins to transiently elevate cAMP levels (By similarity).
Gene ID:	57211
UniProt:	Q86SQ4

Application Details

Application Notes:	ELISA 1:500-1000 IHC-P 1:200-400 IHC-F 1:100-500 IF(IHC-P) 1:50-200 IF(IHC-F) 1:50-200 IF(ICC) 1:50-200 ICC 1:100-500
Restrictions:	For Research Use only

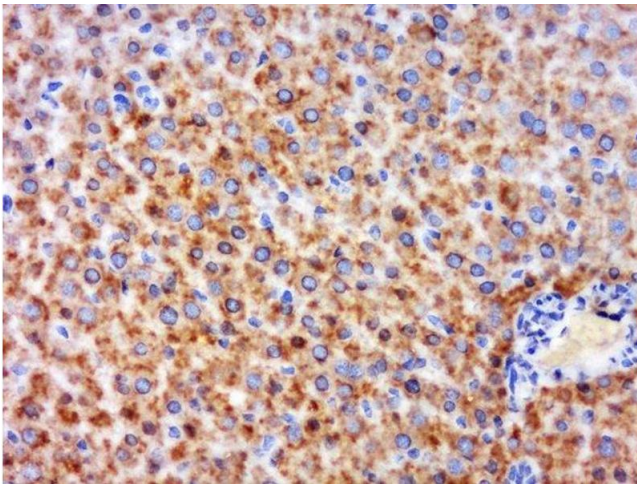
Handling

Format:	Liquid
Concentration:	1 µg/µL
Buffer:	0.01M TBS(pH 7.4) with 1 % BSA, 0.02 % Proclin300 and 50 % Glycerol.
Preservative:	ProClin
Precaution of Use:	This product contains ProClin: a POISONOUS AND HAZARDOUS SUBSTANCE, which should be handled by trained staff only.
Storage:	4 °C,-20 °C
Storage Comment:	Shipped at 4°C. Store at -20°C for one year. Avoid repeated freeze/thaw cycles.
Expiry Date:	12 months



Immunohistochemistry

Image 1. Formalin-fixed and paraffin embedded human placenta labeled with Anti-GPR126 Polyclonal Antibody, Unconjugated (ABIN1387400) at 1:200 followed by conjugation to the secondary antibody and DAB staining



Immunohistochemistry (Paraffin-embedded Sections)

Image 2. Paraformaldehyde-fixed, paraffin embedded mouse liver, Antigen retrieval by boiling in sodium citrate buffer (pH6) for 15min, Block endogenous peroxidase by 3% hydrogen peroxide for 30 minutes, Blocking buffer (normal goat serum) at 37°C for 20min, Antibody incubation with GPR126 Polyclonal Antibody, Unconjugated at 1:600 overnight at 4°C, followed by a conjugated secondary and DAB staining.