

Datasheet for ABIN1387439
anti-SPAG16 antibody (AA 439-485)[Go to Product page](#)

1 Image

Overview

Quantity:	100 µL
Target:	SPAG16
Binding Specificity:	AA 439-485
Reactivity:	Mouse, Rat
Host:	Rabbit
Clonality:	Polyclonal
Conjugate:	This SPAG16 antibody is un-conjugated
Application:	Western Blotting (WB), ELISA, Immunofluorescence (Cultured Cells) (IF (cc)), Immunofluorescence (Paraffin-embedded Sections) (IF (p)), Immunohistochemistry (Paraffin- embedded Sections) (IHC (p)), Immunohistochemistry (Frozen Sections) (IHC (fro)), Immunocytochemistry (ICC)

Product Details

Immunogen:	KLH conjugated synthetic peptide derived from human SPAG16
Isotype:	IgG
Cross-Reactivity:	Mouse, Rat
Predicted Reactivity:	Human,Dog,Cow,Sheep,Horse,Rabbit
Purification:	Purified by Protein A.

Target Details

Target:	SPAG16
---------	--------

Target Details

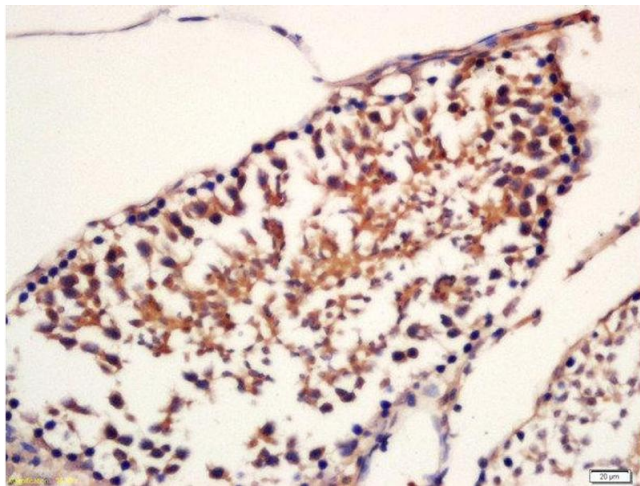
Alternative Name:	SPAG16 (SPAG16 Products)
Background:	Synonyms: PF20, WDR29, Sperm-associated antigen 16 protein, Pf20 protein homolog, SPAG16 Background: Necessary for sperm flagellar function. Plays a role in motile ciliogenesis. May help to recruit STK36 to the cilium or apical surface of the cell to initiate subsequent steps of construction of the central pair apparatus of motile cilia (By similarity).
Gene ID:	79582
UniProt:	Q8N0X2

Application Details

Application Notes:	WB 1:300-5000 ELISA 1:500-1000 IHC-P 1:200-400 IHC-F 1:100-500 IF(IHC-P) 1:50-200 IF(IHC-F) 1:50-200 IF(ICC) 1:50-200 ICC 1:100-500
Restrictions:	For Research Use only

Handling

Format:	Liquid
Concentration:	1 µg/µL
Buffer:	0.01M TBS(pH 7.4) with 1 % BSA, 0.02 % Proclin300 and 50 % Glycerol.
Preservative:	ProClin
Precaution of Use:	This product contains ProClin: a POISONOUS AND HAZARDOUS SUBSTANCE, which should be handled by trained staff only.
Storage:	4 °C,-20 °C
Storage Comment:	Shipped at 4°C. Store at -20°C for one year. Avoid repeated freeze/thaw cycles.
Expiry Date:	12 months



Immunohistochemistry (Paraffin-embedded Sections)

Image 1. Formalin-fixed and paraffin embedded rat testis labeled with Rabbit Anti-SPAG16 Polyclonal Antibody, Unconjugated (ABIN1387439) at 1:200 followed by conjugation to the secondary antibody and DAB staining