

Datasheet for ABIN1387448  
**anti-PPP2R5C antibody (AA 390-435)**[Go to Product page](#)

## 1 Image

## Overview

Quantity:	100 µL
Target:	PPP2R5C
Binding Specificity:	AA 390-435
Reactivity:	Rat, Mouse
Host:	Rabbit
Clonality:	Polyclonal
Conjugate:	This PPP2R5C antibody is un-conjugated
Application:	Western Blotting (WB), ELISA, Immunofluorescence (Cultured Cells) (IF (cc)), Immunofluorescence (Paraffin-embedded Sections) (IF (p)), Immunohistochemistry (Frozen Sections) (IHC (fro)), Immunohistochemistry (Paraffin-embedded Sections) (IHC (p)), Immunocytochemistry (ICC)

## Product Details

Immunogen:	KLH conjugated synthetic peptide derived from human PPP2R5C
Isotype:	IgG
Cross-Reactivity:	Mouse, Rat
Predicted Reactivity:	Human,Dog,Cow,Sheep,Horse,Rabbit
Purification:	Purified by Protein A.

## Target Details

Target:	PPP2R5C
---------	---------

## Target Details

Alternative Name:	PPP2R5C ( <a href="#">PPP2R5C Products</a> )
Background:	<p>Synonyms: 2A5G_HUMAN, B' alpha regulatory subunit, B56G, KIAA0044, MGC23064, PP2A B subunit B' gamma isoform, PP2A B subunit B56 gamma isoform, PP2A B subunit isoform B''-gamma, PP2A B subunit isoform B56-gamma, PP2A B subunit isoform PR61-gamma, PP2A B subunit isoform R5-gamma, PP2A B subunit PR61 gamma isoform, PP2A B subunit R5 gamma isoform, Ppp2r5c, PR61G, Protein phosphatase 2 regulatory subunit B B56 gamma isoform, Protein phosphatase 2 regulatory subunit B' gamma, Renal carcinoma antigen NY REN 29, Renal carcinoma antigen NY-REN-29, Serine/threonine protein phosphatase 2A 56 kDa regulatory subunit gamma isoform, Serine/threonine-protein phosphatase 2A 56 kDa regulatory subunit gamma isoform, 2A5G_HUMAN.</p> <p>Background: In eukaryotes, the phosphorylation and dephosphorylation of proteins on serine and threonine residues is an essential means of regulating a broad range of cellular functions, including division, homeostasis and apoptosis. A group of proteins that are intimately involved in this process are the protein phosphatases. In general, the protein phosphatase (PP) holoenzyme is a trimeric complex composed of a regulatory subunit, a variable subunit, and a catalytic subunit. Four major families of protein phosphatase catalytic subunits have been identified, designated PP1, PP2A, PP2B (calcineurin) and PP2C. An additional protein phosphatase catalytic subunit, PPX (also known as PP4) is a putative member of a novel PP family. The PP2A family comprises subfamily members PP2A Alpha and PP2A Beta. The PP2A catalytic subunit associates with a variety of regulatory subunits. Regulatory subunits include PP2A-A-Alpha and -A-Beta, PP2A-B-Alpha and -B-Beta, PP2A-C-Alpha and -C-Beta, PP2A-B56-Alpha, -B56-Beta, -B56-gamma and -B56-Delta.</p>
Pathways:	<a href="#">PI3K-Akt Signaling</a>

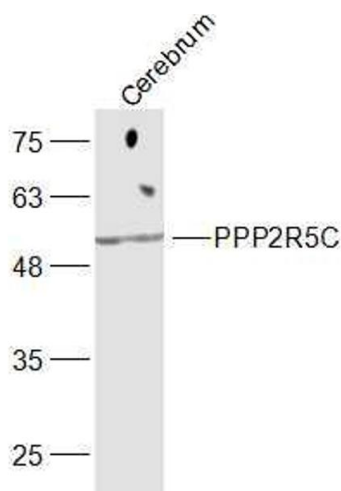
## Application Details

Application Notes:	WB 1:300-5000 ELISA 1:500-1000 IHC-P 1:200-400 IHC-F 1:100-500 IF(IHC-P) 1:50-200 IF(IHC-F) 1:50-200 IF(ICC) 1:50-200 ICC 1:100-500
Restrictions:	For Research Use only

Handling

Format:	Liquid
Concentration:	1 µg/µL
Buffer:	0.01M TBS( pH 7.4) with 1 % BSA, 0.02 % Proclin300 and 50 % Glycerol.
Preservative:	ProClin
Precaution of Use:	This product contains ProClin: a POISONOUS AND HAZARDOUS SUBSTANCE, which should be handled by trained staff only.
Storage:	4 °C,-20 °C
Storage Comment:	Shipped at 4°C. Store at -20°C for one year. Avoid repeated freeze/thaw cycles.
Expiry Date:	12 months

Images



**Image 1.** Mouse cerebrum lysates probed with PPP2R5C Polyclonal Antibody, Unconjugated at 1:300 dilution and 4°C overnight incubation. Followed by conjugated secondary antibody incubation at 1:10000 for 60 min at 37°C.