

Datasheet for ABIN1387455
anti-SLIT1 antibody (AA 455-500)[Go to Product page](#)

1 Image

Overview

Quantity:	100 µL
Target:	SLIT1
Binding Specificity:	AA 455-500
Reactivity:	Human
Host:	Rabbit
Clonality:	Polyclonal
Conjugate:	This SLIT1 antibody is un-conjugated
Application:	Western Blotting (WB), ELISA, Immunohistochemistry (Paraffin-embedded Sections) (IHC (p)), Immunofluorescence (Paraffin-embedded Sections) (IF (p)), Immunofluorescence (Cultured Cells) (IF (cc)), Immunohistochemistry (Frozen Sections) (IHC (fro))

Product Details

Immunogen:	KLH conjugated synthetic peptide derived from human Slit1/MEGF4
Isotype:	IgG
Predicted Reactivity:	Human,Mouse,Rat,Dog,Cow,Sheep,Horse,Chicken,Rabbit
Purification:	Purified by Protein A.

Target Details

Target:	SLIT1
Alternative Name:	Slit1/MEGF4 (SLIT1 Products)

Target Details

Background: Synonyms: MEGF 4, MEGF4, Multiple EGF like domains protein 4, Multiple epidermal growth factor like domains 4, Multiple epidermal growth factor like domains protein 4, SLIL 1, SLIL1, Slit 1, SLIT 3, Slit homolog 1, Slit homolog 1 protein, Slit-1, Slit1, SLIT3, KIAA0813, SLIT1_HUMAN.

Background: Secreted leucine-rich repeat-containing proteins 1-3 (Slit1-3) are secreted glycoproteins that influence axonal guidance and mediate normal neural development by acting as high-affinity signaling ligands for the repulsive guidance receptor, Roundabout (Robo) (1, 2). Within the developing central nervous system (CNS) of different vertebrate systems, Slit proteins are expressed in equivalent regions, suggesting a conserved function among vertebrate homologs (3,4). Slit is expressed in the midline of the central nervous system in both vertebrates and invertebrates, where it functions as a regulatory factor of mesodermal cell movement during gastrulation (5). Slit2 is a short range inhibitory guidance cue for retinal ganglion cell (RGC) axons that may mediate spatial progression of RGCs (6,7).

Pathways: [Regulation of Cell Size](#)

Application Details

Application Notes: WB 1:300-5000
ELISA 1:500-1000
IHC-P 1:200-400
IHC-F 1:100-500
IF(IHC-P) 1:50-200
IF(IHC-F) 1:50-200
IF(ICC) 1:50-200

Restrictions: For Research Use only

Handling

Format: Liquid

Concentration: 1 µg/µL

Buffer: 0.01M TBS(pH 7.4) with 1 % BSA, 0.02 % Proclin300 and 50 % Glycerol.

Preservative: ProClin

Precaution of Use: This product contains ProClin: a POISONOUS AND HAZARDOUS SUBSTANCE, which should be handled by trained staff only.

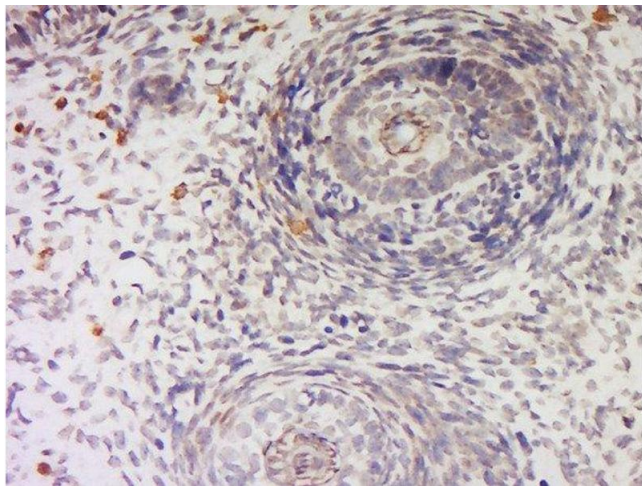
Storage: 4 °C, -20 °C

Handling

Storage Comment: Shipped at 4°C. Store at -20°C for one year. Avoid repeated freeze/thaw cycles.

Expiry Date: 12 months

Images



Immunohistochemistry (Paraffin-embedded Sections)

Image 1. Formalin-fixed and paraffin embedded mouse embryo labeled with Anti-Slit1/MEGF4 Polyclonal Antibody, Unconjugated at 1:200 followed by conjugation to the secondary antibody and DAB staining.