

Datasheet for ABIN1387456  
**anti-ZFHX3 antibody (AA 301-400)**[Go to Product page](#)

## 1 Image

## Overview

Quantity:	100 µL
Target:	ZFHX3
Binding Specificity:	AA 301-400
Reactivity:	Rat
Host:	Rabbit
Clonality:	Polyclonal
Conjugate:	This ZFHX3 antibody is un-conjugated
Application:	ELISA, Immunofluorescence (Cultured Cells) (IF (cc)), Immunofluorescence (Paraffin-embedded Sections) (IF (p)), Immunohistochemistry (Paraffin-embedded Sections) (IHC (p)), Immunohistochemistry (Frozen Sections) (IHC (fro)), Immunocytochemistry (ICC)

## Product Details

Immunogen:	KLH conjugated synthetic peptide derived from human ATBF1
Isotype:	IgG
Cross-Reactivity:	Rat
Predicted Reactivity:	Human,Mouse,Dog,Cow,Sheep,Horse,Chicken,Rabbit
Purification:	Purified by Protein A.

## Target Details

Target:	ZFHX3
---------	-------

## Target Details

Alternative Name:	ATBF1 ( <a href="#">ZFHX3 Products</a> )
Background:	<p>Synonyms: Alpha fetoprotein enhancer binding protein, AT binding transcription factor 1, AT mot binding factor, ATBT, ZFHX3, ZFHX3_HUMAN.</p> <p>Background: AT-motif binding factor 1 (ATBF1) binds to the AT-rich core sequence element in the human a-fetoprotein enhancer (1). Alternative splicing generates the ATBF1-A and ATBF1-B (2,3). While ATBF1-A contains a 920-amino acid extension at the N-terminus, both ATBF1-A and ATBF1-B contain 4 DNA-binding homeobox domains (2,3). Additionally, ATBF1-A contains 23 zinc finger motifs while ATBF1-B contains 18 zinc finger motifs (13). The N-terminal extension unique to ATBF1-A has transcriptional repressor activity (4). In the small intestine, ATBF1-A inhibits expression of the brushborder enzyme aminopeptidase-N through direct binding to the AT motif element (5). Besides functioning in transcription regulation, ATBF1 also functions in ATPase activity (6). ATPase activity associated with ATBF1-A is DNA/RNA-dependent and requires both homeobox domains and zinc finger motifs (6). ATBF1 is highly expressed in spleen and brain tissues (7). The gene encoding human ATBF1 maps to chromosome 16q22.3-q23.1 (8).</p>
Pathways:	<a href="#">Regulation of Muscle Cell Differentiation, Skeletal Muscle Fiber Development</a>

## Application Details

Application Notes:	ELISA 1:500-1000 IHC-P 1:200-400 IHC-F 1:100-500 IF(IHC-P) 1:50-200 IF(IHC-F) 1:50-200 IF(ICC) 1:50-200 ICC 1:100-500
Restrictions:	For Research Use only

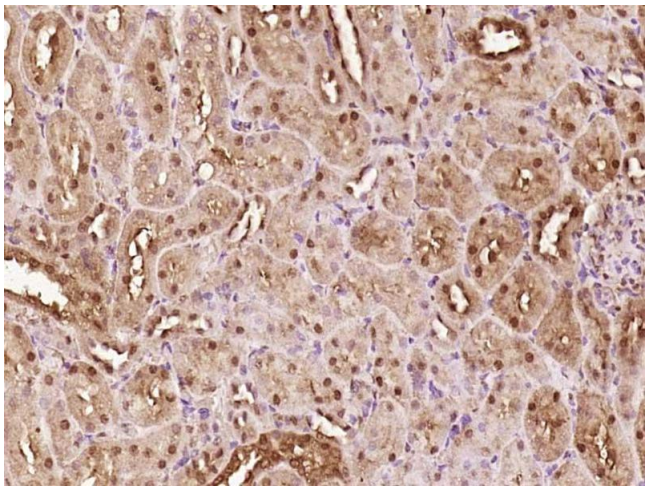
## Handling

Format:	Liquid
Concentration:	1 µg/µL
Buffer:	0.01M TBS( pH 7.4) with 1 % BSA, 0.02 % Proclin300 and 50 % Glycerol.
Preservative:	ProClin

Handling

Precaution of Use:	This product contains ProClin: a POISONOUS AND HAZARDOUS SUBSTANCE, which should be handled by trained staff only.
Storage:	4 °C,-20 °C
Storage Comment:	Shipped at 4°C. Store at -20°C for one year. Avoid repeated freeze/thaw cycles.
Expiry Date:	12 months

Images



Immunohistochemistry (Paraffin-embedded Sections)

**Image 1.** Paraformaldehyde-fixed, paraffin embedded rat kidney; Antigen retrieval by boiling in sodium citrate buffer (pH6) for 15min; Block endogenous peroxidase by 3% hydrogen peroxide for 30 minutes; Blocking buffer (normal goat serum) at 37°C for 20min; Antibody incubation with ATBF1 Polyclonal Antibody, Unconjugated (bs-11805R) at 1:200 overnight at 4°C, followed by a conjugated secondary and DAB staining.