

Datasheet for ABIN1387477
anti-WWC1 antibody (AA 351-450)

2 Images

[Go to Product page](#)

Overview

Quantity:	100 µL
Target:	WWC1
Binding Specificity:	AA 351-450
Reactivity:	Human, Mouse, Rat
Host:	Rabbit
Clonality:	Polyclonal
Conjugate:	This WWC1 antibody is un-conjugated
Application:	Western Blotting (WB), ELISA, Immunofluorescence (Cultured Cells) (IF (cc)), Immunofluorescence (Paraffin-embedded Sections) (IF (p)), Immunocytochemistry (ICC), Immunohistochemistry (Paraffin-embedded Sections) (IHC (p)), Immunohistochemistry (Frozen Sections) (IHC (fro))

Product Details

Immunogen:	KLH conjugated synthetic peptide derived from human KIBRA
Isotype:	IgG
Cross-Reactivity:	Human, Mouse, Rat
Predicted Reactivity:	Dog,Cow,Sheep,Rabbit
Purification:	Purified by Protein A.

Target Details

Target:	WWC1
---------	------

Target Details

Alternative Name:	KIBRA (WWC1 Products)
Background:	<p>Synonyms: KIBRA, HBEBP3, HBEBP36, MEMRYQTL, PPP1R168, Protein KIBRA, HBeAg-binding protein 3, Kidney and brain protein, WW domain-containing protein 1, WWC1, KIAA0869</p> <p>Background: Probable regulator of the Hippo/SWH (Sav/Wts/Hpo) signaling pathway, a signaling pathway that plays a pivotal role in tumor suppression by restricting proliferation and promoting apoptosis. Along with NF2 can synergistically induce the phosphorylation of LATS1 and LATS2 and can probably function in the regulation of the Hippo/SWH (Sav/Wts/Hpo) signaling pathway. Acts as a transcriptional coactivator of ESR1 which plays an essential role in DYNLL1-mediated ESR1 transactivation. Regulates collagen-stimulated activation of the ERK/MAPK cascade. Modulates directional migration of podocytes. Acts as a substrate for PRKCZ. Plays a role in cognition and memory performance.</p>
Gene ID:	23286
UniProt:	Q8IX03

Application Details

Application Notes:	<p>WB 1:300-5000</p> <p>ELISA 1:500-1000</p> <p>IHC-P 1:200-400</p> <p>IHC-F 1:100-500</p> <p>IF(IHC-P) 1:50-200</p> <p>IF(IHC-F) 1:50-200</p> <p>IF(ICC) 1:50-200</p> <p>ICC 1:100-500</p>
Restrictions:	For Research Use only

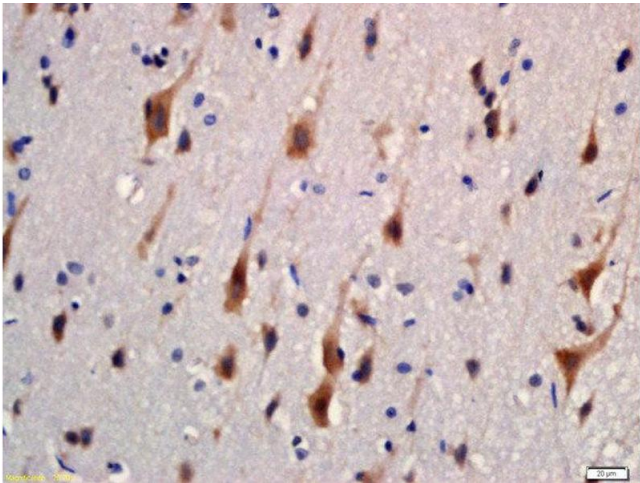
Handling

Format:	Liquid
Concentration:	1 µg/µL
Buffer:	0.01M TBS(pH 7.4) with 1 % BSA, 0.02 % Proclin300 and 50 % Glycerol.
Preservative:	ProClin
Precaution of Use:	This product contains ProClin: a POISONOUS AND HAZARDOUS SUBSTANCE, which should be handled by trained staff only.

Handling

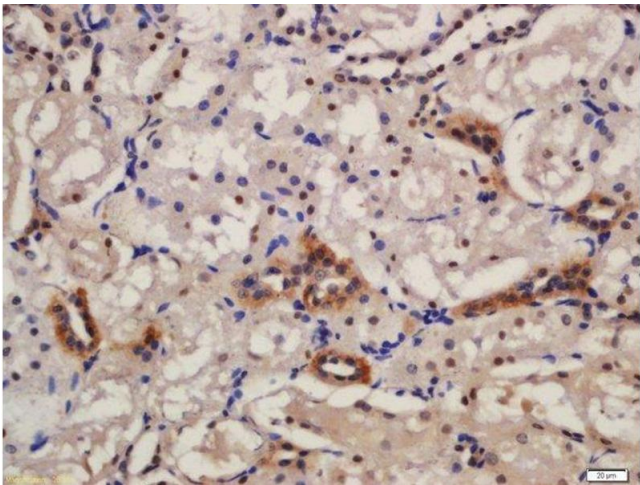
Storage:	4 °C,-20 °C
Storage Comment:	Shipped at 4°C. Store at -20°C for one year. Avoid repeated freeze/thaw cycles.
Expiry Date:	12 months

Images



Immunohistochemistry (Paraffin-embedded Sections)

Image 1. Formalin-fixed and paraffin embedded rat brain labeled with Rabbit Anti-KIBRA Polyclonal Antibody, Unconjugated (ABIN1387477) at 1:200 followed by conjugation to the secondary antibody and DAB staining



Immunohistochemistry (Paraffin-embedded Sections)

Image 2. Formalin-fixed and paraffin embedded rat kidney labeled with Anti-KIBRA Polyclonal Antibody, Unconjugated at 1:200 followed by conjugation to the secondary antibody and DAB staining