



[Go to Product page](#)

Datasheet for ABIN1387508  
**anti-Netrin 4 antibody (AA 520-628)**

2 Images

Overview

Quantity:	100 µL
Target:	Netrin 4 (NTN4)
Binding Specificity:	AA 520-628
Reactivity:	Human
Host:	Rabbit
Clonality:	Polyclonal
Conjugate:	This Netrin 4 antibody is un-conjugated
Application:	Western Blotting (WB), ELISA, Immunofluorescence (Cultured Cells) (IF (cc)), Immunofluorescence (Paraffin-embedded Sections) (IF (p)), Immunohistochemistry (Paraffin-embedded Sections) (IHC (p)), Immunocytochemistry (ICC), Immunohistochemistry (Frozen Sections) (IHC (fro))

Product Details

Immunogen:	KLH conjugated synthetic peptide derived from human Netrin 4
Isotype:	IgG
Predicted Reactivity:	Human,Mouse,Rat,Dog,Cow,Pig,Horse,Rabbit
Purification:	Purified by Protein A.

Target Details

Target:	Netrin 4 (NTN4)
Alternative Name:	Netrin 4 ( <a href="#">NTN4 Products</a> )

## Target Details

---

**Background:** Synonyms: Beta netrin, Beta-netrin, Hepar derived netrin like protein, Hepar-derived netrin-like protein, NET4\_HUMAN, Netrin-4, Netrin4, NTN 4, NTN4.

Background: Netrin proteins are a family of laminin-related secreted proteins that provide guidance signals for axonal growth and cell migration during development. Netrin signaling is dependent on the concentration of calcium outside the cell and the level of PKA activity. In axonal cells, a reduction in PKA activity converts the responsiveness of the axons to the netrin proteins, as the cells are repelled, rather than attracted, by the netrin gradient. Netrin-4 is related to the Laminin chains, and is therefore also designated -netrin. It is present in the basement membranes of the vasculature, lateral olfactory tract, kidney and ovary. In humans, the gene encoding for the netrin-4 protein is localized to chromosome 12q22-q23. High levels of netrin-4 mRNA have also been detected in many cells and tissues, including cerebral cortex, hippocampus, amygdaloid nuclei and Purkinje cells. Netrin-4 is important in neural, kidney and vascular development.

---

**Gene ID:** 59277

## Application Details

---

**Application Notes:** WB 1:300-5000  
ELISA 1:500-1000  
IHC-P 1:200-400  
IHC-F 1:100-500  
IF(IHC-P) 1:50-200  
IF(IHC-F) 1:50-200  
IF(ICC) 1:50-200  
ICC 1:100-500

---

**Restrictions:** For Research Use only

## Handling

---

**Format:** Liquid

**Concentration:** 1 µg/µL

**Buffer:** 0.01M TBS( pH 7.4) with 1 % BSA, 0.02 % Proclin300 and 50 % Glycerol.

**Preservative:** ProClin

**Precaution of Use:** This product contains ProClin: a POISONOUS AND HAZARDOUS SUBSTANCE, which should be handled by trained staff only.

---

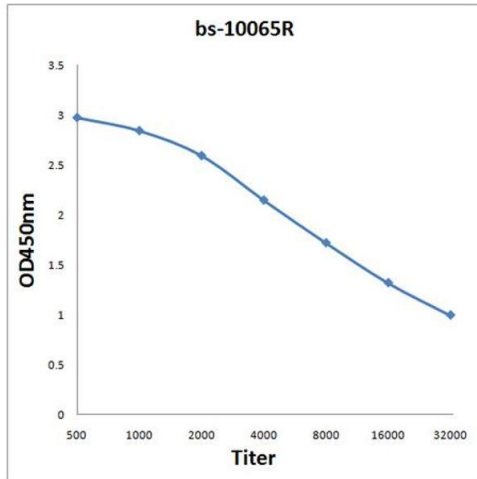
## Handling

Storage: 4 °C,-20 °C

Storage Comment: Shipped at 4°C. Store at -20°C for one year. Avoid repeated freeze/thaw cycles.

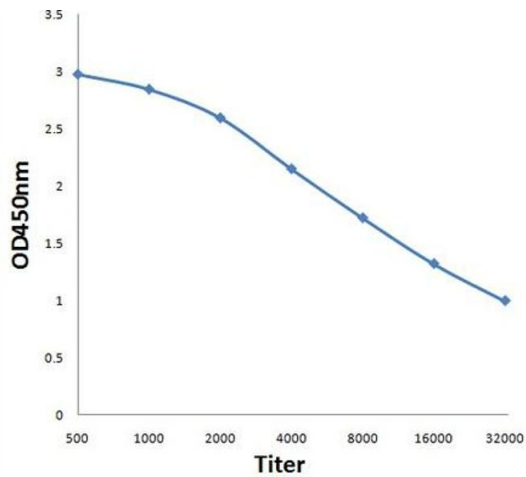
Expiry Date: 12 months

## Images



### ELISA

**Image 1.** Antigen: 2 µg/100 µL Primary: Antiserum, 1:500, 1:1000, 1:2000, 1:4000, 1:8000, 1:16000, 1:32000; Secondary: HRP conjugated Rabbit Anti-Goat IgG at 1: 5000; TMB staining Read the data in Microplate Reader by 450nm.



### ELISA

**Image 2.** Antigen: 0.2ug/100ul, Primary: Antiserum, 1:500, 1:1000, 1:2000, 1:4000, 1:8000, 1:16000, 1:32000, Secondary: HRP conjugated Goat-Anti-Rabbit IgG at 1: 5000, TMB staining, Read the data in MicroplateReader by 450nm