

Datasheet for ABIN1387510
anti-Bestrophin antibody[Go to Product page](#)

2 Images

Overview

Quantity:	100 µL
Target:	Bestrophin (LOC100368263)
Reactivity:	Human, Mouse, Rat
Host:	Rabbit
Clonality:	Polyclonal
Conjugate:	This Bestrophin antibody is un-conjugated
Application:	ELISA, Immunofluorescence (Cultured Cells) (IF (cc)), Immunofluorescence (Paraffin-embedded Sections) (IF (p)), Immunohistochemistry (Frozen Sections) (IHC (fro)), Immunohistochemistry (Paraffin-embedded Sections) (IHC (p)), Immunocytochemistry (ICC)

Product Details

Immunogen:	KLH conjugated synthetic peptide derived from human Bestrophin
Isotype:	IgG
Cross-Reactivity:	Human
Predicted Reactivity:	Mouse,Rat,Dog,Cow,Pig,Horse,Rabbit
Purification:	Purified by Protein A.

Target Details

Target:	Bestrophin (LOC100368263)
Alternative Name:	Bestrophin (LOC100368263 Products)

Target Details

Background:	<p>Synonyms: BEST 1, BEST1, BEST-1, BEST, Best macular dystrophy, BEST1, BEST1_HUMAN, Bestrophin 1, Bestrophin-1, Bestrophin1, BMD, mBest1, TU15B, Vitellorm macular dystrophy 2, Vitellorm macular dystrophy, Vitellorm macular dystrophy protein 2, VMD 2, VMD2.</p> <p>Background: Best vitelliform macular dystrophy, known as Best disease, is an early-onset autosomal dominant condition in which accumulation of lipofuscin-like material within and beneath the RPE leads to progressive loss of central vision. Best disease is frequently a reflection of mutations in the Bestrophin gene, which encodes a protein containing four putative transmembrane domains and localizes to the basolateral plasma membrane of RPE cells. Human Bestrophin forms oligomeric chloride channels that are sensitive to intracellular calcium. Missense mutations at the Bestrophin locus reduces or abolishes Bestrophin protein mediated membrane current. Bestrophin Bestrophin 2,Bestrophin 3, and Bestrophin 4 are transmembrane proteins that contain a high percentage of aromatic residues, a conserved RFP (Arg-Phe-Pro) motif and they function as anion channels.</p>
-------------	---

Gene ID:	5068
----------	------

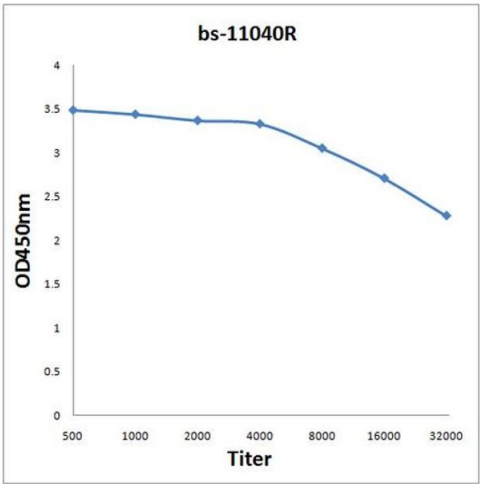
Application Details

Application Notes:	WB 1:100-1000 IHC-P 1:100-500 IF(IHC-P) 1:50-200
--------------------	--

Restrictions:	For Research Use only
---------------	-----------------------

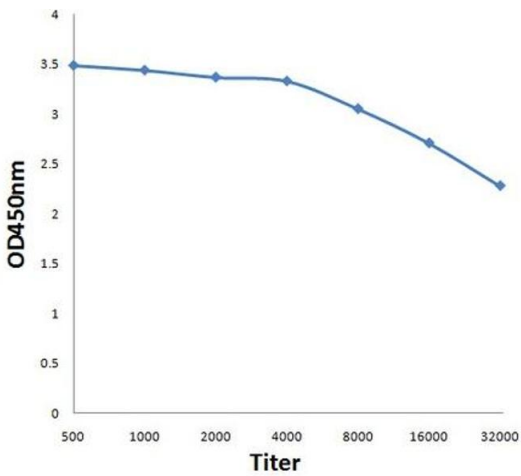
Handling

Format:	Liquid
Concentration:	1 µg/µL
Buffer:	0.01M TBS(pH 7.4) with 1 % BSA, 0.02 % Proclin300 and 50 % Glycerol.
Preservative:	Sodium azide
Precaution of Use:	This product contains Sodium azide: a POISONOUS AND HAZARDOUS SUBSTANCE, which should be handled by trained staff only.
Storage:	4 °C,-20 °C
Storage Comment:	Shipped at 4°C. Store at -20°C for one year. Avoid repeated freeze/thaw cycles.
Expiry Date:	12 months



ELISA

Image 1. Antigen: 2 µg/100 µL Primary: Antiserum, 1:500, 1:1000, 1:2000, 1:4000, 1:8000, 1:16000, 1:32000; Secondary: HRP conjugated Rabbit Anti-Goat IgG at 1: 5000; TMB staining Read the data in Microplate Reader by 450nm.



ELISA

Image 2. Antigen: 0.2ug/100ul, Primary: Antiserum, 1:500, 1:1000, 1:2000, 1:4000, 1:8000, 1:16000, 1:32000, Secondary: HRP conjugated Goat-Anti-Rabbit IgG at 1: 5000, TMB staining, Read the data in MicroplateReader by 450nm