

Datasheet for ABIN1387514
anti-SORL1 antibody (AA 2001-2100)[Go to Product page](#)

2 Images

Overview

Quantity:	100 µL
Target:	SORL1
Binding Specificity:	AA 2001-2100
Reactivity:	Human
Host:	Rabbit
Clonality:	Polyclonal
Conjugate:	This SORL1 antibody is un-conjugated
Application:	ELISA, Immunofluorescence (Cultured Cells) (IF (cc)), Immunofluorescence (Paraffin-embedded Sections) (IF (p)), Immunohistochemistry (Paraffin-embedded Sections) (IHC (p)), Immunocytochemistry (ICC), Immunohistochemistry (Frozen Sections) (IHC (fro))

Product Details

Immunogen:	KLH conjugated synthetic peptide derived from human SorLA
Isotype:	IgG
Predicted Reactivity:	Human,Mouse,Rat,Dog,Cow,Pig,Horse,Rabbit
Purification:	Purified by Protein A.

Target Details

Target:	SORL1
Alternative Name:	SorLA (SORL1 Products)

Target Details

Background:	<p>Synonyms: C11orf32, FLJ21930, FLJ39258, gp250, LDLR relative with 11 ligand binding repeats, LDLR relative with 11 ligand-binding repeats, Low density lipoprotein receptor relative with 11 ligand binding repeats, Low-density lipoprotein receptor relative with 11 ligand-binding repeats, LR 11, LR11, LRP 9, LRP9, Mosaic protein LR11, SORL 1, SORL_HUMAN, SORL1, SorLA 1, SorLA, SorLA-1, Sortilin related receptor, Sortilin related receptor LDLR class A repeats containing, Sortilin-related receptor, Sorting protein related receptor containing LDLR class A repeats, Sorting protein-related receptor containing LDLR class A repeats,</p> <p>Background: Sortilin-related receptor, also known as Sorting protein-related receptor containing LDLR class A (SorLA), is a Type I membrane protein that may be involved in cell-cell interaction. SorLA, a single transmembrane receptor, binds LDL (the main cholesterol-carrying lipoprotein of plasma) and transports it into cells by endocytosis. SorLA is synthesized as a proreceptor which is processed to the mature form by a furin-like propeptidase. It can also bind to RAP, receptor-associated protein. SorLa is a multifunctional endocytis receptor important in lipoprotein and protease uptake. The N-terminal propeptide, which is removed, can be cleaved by furin or homologous proteases. Endogenous sorLA binds the neuropeptide head activator (HA) and is important for HA signaling and function. It is expressed mainly in brain (cerebral cortex, cerebellum and the occipital pole), but can also be found in liver, spinal cord, kidney, testis and pancreas.</p>
-------------	--

Gene ID:	79845
----------	-------

Pathways:	Smooth Muscle Cell Migration
-----------	--

Application Details

Application Notes:	ELISA 1:500-1000
	IHC-P 1:200-400
	IHC-F 1:100-500
	IF(IHC-P) 1:50-200
	IF(IHC-F) 1:50-200
	IF(ICC) 1:50-200
	ICC 1:100-500

Restrictions:	For Research Use only
---------------	-----------------------

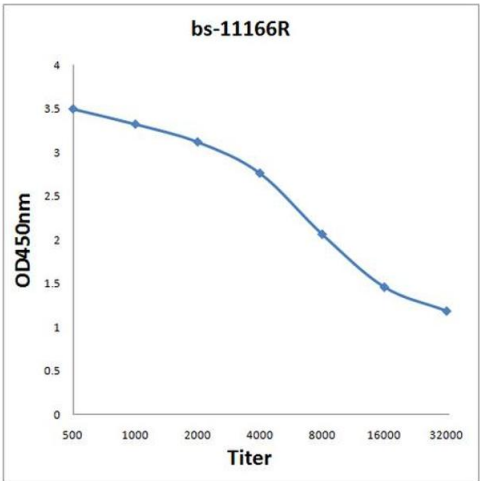
Handling

Format:	Liquid
---------	--------

Handling

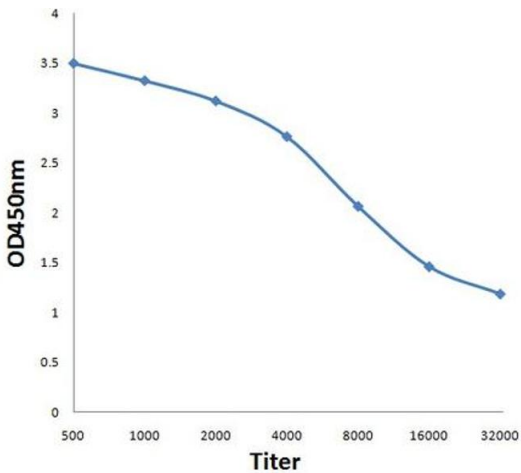
Concentration:	1 µg/µL
Buffer:	0.01M TBS(pH 7.4) with 1 % BSA, 0.02 % Proclin300 and 50 % Glycerol.
Preservative:	ProClin
Precaution of Use:	This product contains ProClin: a POISONOUS AND HAZARDOUS SUBSTANCE, which should be handled by trained staff only.
Storage:	4 °C,-20 °C
Storage Comment:	Shipped at 4°C. Store at -20°C for one year. Avoid repeated freeze/thaw cycles.
Expiry Date:	12 months

Images



ELISA

Image 1. Antigen: 2 µg/100 µL Primary: Antiserum, 1:500, 1:1000, 1:2000, 1:4000, 1:8000, 1:16000, 1:32000; Secondary: HRP conjugated Rabbit Anti-Goat IgG at 1: 5000; TMB staining Read the data in Microplate Reader by 450nm.



ELISA

Image 2. Antigen: 0.2ug/100ul, Primary: Antiserum, 1:500, 1:1000, 1:2000, 1:4000, 1:8000, 1:16000, 1:32000, Secondary: HRP conjugated Goat-Anti-Rabbit IgG at 1: 5000, TMB staining, Read the data in MicroplateReader by 450nm