

Datasheet for ABIN1387528
anti-GABRA2 antibody (AA 185-280)

3 Images

[Go to Product page](#)

Overview

Quantity:	100 µL
Target:	GABRA2
Binding Specificity:	AA 185-280
Reactivity:	Mouse, Rat
Host:	Rabbit
Clonality:	Polyclonal
Conjugate:	This GABRA2 antibody is un-conjugated
Application:	Western Blotting (WB), ELISA, Flow Cytometry (FACS), Immunohistochemistry (Paraffin-embedded Sections) (IHC (p)), Immunocytochemistry (ICC), Immunofluorescence (Cultured Cells) (IF (cc)), Immunofluorescence (Paraffin-embedded Sections) (IF (p)), Immunohistochemistry (Frozen Sections) (IHC (fro))

Product Details

Immunogen:	KLH conjugated synthetic peptide derived from human GABRA2/GABA A Receptor alpha 2
Isotype:	IgG
Cross-Reactivity:	Mouse, Rat
Predicted Reactivity:	Human,Dog,Cow,Pig,Horse,Rabbit
Purification:	Purified by Protein A.

Target Details

Target:	GABRA2
---------	--------

Target Details

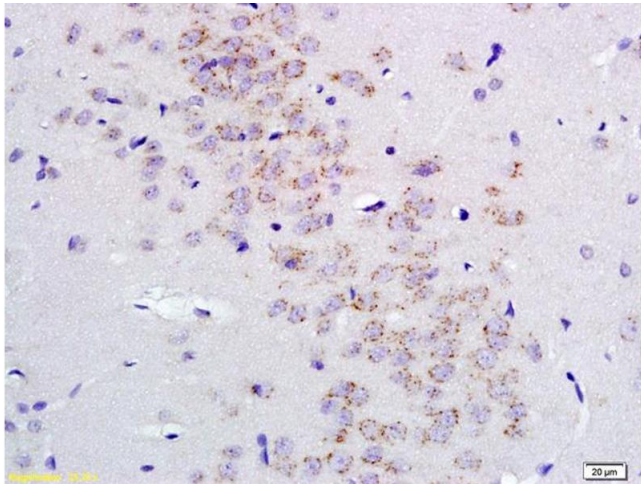
Alternative Name:	GABRA2/GABA A Receptor alpha 2 (GABRA2 Products)
Background:	<p>Synonyms: Gamma-aminobutyric acid receptor subunit alpha-2, GABA(A) receptor subunit alpha-2, GABRA2</p> <p>Background: GABA, the major inhibitory neurotransmitter in the vertebrate brain, mediates neuronal inhibition by binding to the GABA/benzodiazepine receptor and opening an integral chloride channel.</p>
Gene ID:	2555
UniProt:	P47869

Application Details

Application Notes:	WB 1:300-5000 ELISA 1:500-1000 FCM 1:20-100 IHC-P 1:200-400 IHC-F 1:100-500 IF(IHC-P) 1:50-200 IF(IHC-F) 1:50-200 IF(ICC) 1:50-200 ICC 1:100-500
Restrictions:	For Research Use only

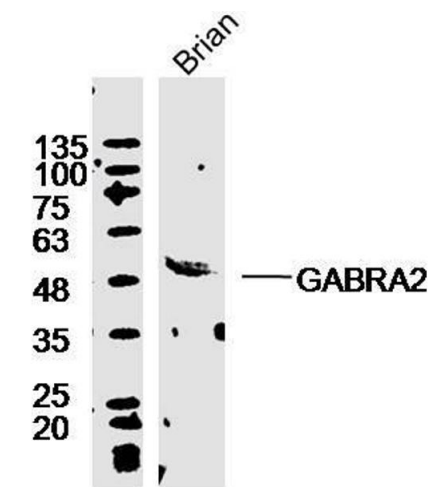
Handling

Format:	Liquid
Concentration:	1 µg/µL
Buffer:	0.01M TBS(pH 7.4) with 1 % BSA, 0.02 % Proclin300 and 50 % Glycerol.
Preservative:	ProClin
Precaution of Use:	This product contains ProClin: a POISONOUS AND HAZARDOUS SUBSTANCE, which should be handled by trained staff only.
Storage:	4 °C,-20 °C
Storage Comment:	Shipped at 4°C. Store at -20°C for one year. Avoid repeated freeze/thaw cycles.
Expiry Date:	12 months



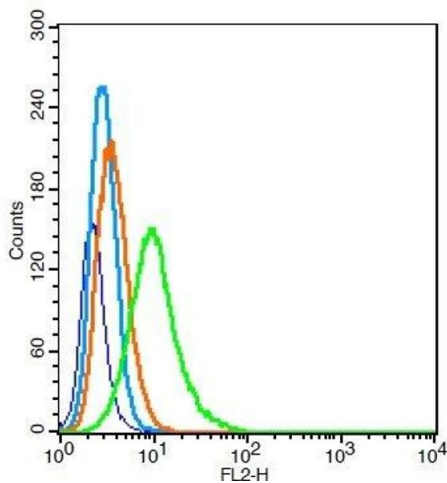
Immunohistochemistry

Image 1. Formalin-fixed and paraffin embedded rat brain labeled with Anti GABRA2/GABA A Receptor alpha 2 Polyclonal Antibody, Unconjugated (ABIN1387528) at 1:200 followed by conjugation to the secondary antibody and DAB staining



Western Blotting

Image 2. Mouse brain lysates probed with Rabbit Anti-GABRA2/GABA A Receptor alpha 2 Polyclonal Antibody, Unconjugated) at 1:300 overnight at 4°C. Followed by a conjugated secondary antibody at 1:5000 for 90 min at 37°C.



Flow Cytometry

Image 3. RSC96 cells probed with GABRA2/GABA A Receptor alpha 2 Antibody, Unconjugated at 1:100 for 30 minutes followed by incubation with a conjugated secondary (PE Conjugated) (green) for 30 minutes compared to control cells (blue), secondary only (light blue) and isotype control (orange).