

Datasheet for ABIN1387530
anti-THO Complex 2 antibody (AA 101-200)[Go to Product page](#)

1 Image

Overview

Quantity:	100 µL
Target:	THO Complex 2 (THOC2)
Binding Specificity:	AA 101-200
Reactivity:	Human
Host:	Rabbit
Clonality:	Polyclonal
Conjugate:	This THO Complex 2 antibody is un-conjugated
Application:	Western Blotting (WB), Immunofluorescence (Cultured Cells) (IF (cc)), Immunofluorescence (Paraffin-embedded Sections) (IF (p)), ELISA, Immunohistochemistry (Paraffin-embedded Sections) (IHC (p)), Immunohistochemistry (Frozen Sections) (IHC (fro))

Product Details

Immunogen:	KLH conjugated synthetic peptide derived from human THOC2
Isotype:	IgG
Cross-Reactivity:	Human
Predicted Reactivity:	Mouse,Rat,Dog,Cow,Pig,Horse,Rabbit
Purification:	Purified by Protein A.

Target Details

Target:	THO Complex 2 (THOC2)
---------	-----------------------

Target Details

Alternative Name: THOC2 ([THOC2 Products](#))

Background: Synonyms: THO2, CXorf3, hTREX120, dJ506G2.1, THO complex subunit 2, THOC2
Background: Required for efficient export of polyadenylated RNA and spliced mRNA. Acts as component of the THO subcomplex of the TREX complex which is thought to couple mRNA transcription, processing and nuclear export, and which specifically associates with spliced mRNA and not with unspliced pre-mRNA. TREX is recruited to spliced mRNAs by a transcription-independent mechanism, binds to mRNA upstream of the exon-junction complex (EJC) and is recruited in a splicing- and cap-dependent manner to a region near the 5' end of the mRNA where it functions in mRNA export to the cytoplasm via the TAP/NFX1 pathway. The TREX complex is essential for the export of Kaposi's sarcoma-associated herpesvirus (KSHV) intronless mRNAs and infectious virus production. THOC2 (and probably the THO complex) is involved in releasing mRNA from nuclear speckle domains. Required for NXF1 localization to the nuclear rim.

Gene ID: 57187

UniProt: [Q8NI27](#)

Application Details

Application Notes: WB 1:300-5000
ELISA 1:500-1000
IHC-P 1:200-400
IHC-F 1:100-500
IF(IHC-P) 1:50-200
IF(IHC-F) 1:50-200
IF(ICC) 1:50-200

Restrictions: For Research Use only

Handling

Format: Liquid

Concentration: 1 µg/µL

Buffer: 0.01M TBS(pH 7.4) with 1 % BSA, 0.02 % Proclin300 and 50 % Glycerol.

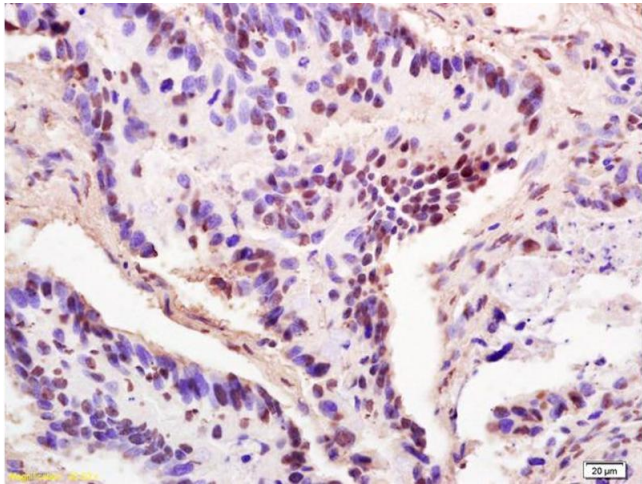
Preservative: ProClin

Precaution of Use: This product contains ProClin: a POISONOUS AND HAZARDOUS SUBSTANCE, which should be

Handling

	handled by trained staff only.
Storage:	4 °C,-20 °C
Storage Comment:	Shipped at 4°C. Store at -20°C for one year. Avoid repeated freeze/thaw cycles.
Expiry Date:	12 months

Images



Immunohistochemistry

Image 1. Formalin-fixed and paraffin embedded human colon carcinoma labeled Anti-THOC2 Polyclonal Antibody, Unconjugated (ABIN1387530) at 1:200, followed by conjugation to the secondary antibody and DAB staining