

Datasheet for ABIN1387534  
**anti-HSPB2 antibody (AA 101-182)**



[Go to Product page](#)

1 Image

## Overview

|                      |  |
|----------------------|--|
| Quantity:            | 100 µL   |
| Target:              | HSPB2  |
| Binding Specificity: | AA 101-182   |
| Reactivity:          | Mouse, Rat   |
| Host:                | Rabbit   |
| Clonality:           | Polyclonal   |
| Conjugate:           | This HSPB2 antibody is un-conjugated   |
| Application:         | Western Blotting (WB), ELISA, Immunohistochemistry (Paraffin-embedded Sections) (IHC (p)), Immunofluorescence (Cultured Cells) (IF (cc)), Immunofluorescence (Paraffin-embedded Sections) (IF (p)), Immunohistochemistry (Frozen Sections) (IHC (fro)) |

## Product Details

|                       |   |
|-----------------------|---|
| Immunogen:            | KLH conjugated synthetic peptide derived from human HSPB2 |
| Isotype:              | IgG   |
| Cross-Reactivity:     | Mouse, Rat  |
| Predicted Reactivity: | Human,Dog,Cow,Pig,Horse,Rabbit                            |
| Purification:         | Purified by Protein A.                                    |

## Target Details

|         |       |
|---------|-------|
| Target: | HSPB2 |
|---------|-------|

## Target Details

|                   |   |
|-------------------|---|
| Alternative Name: | HSPB2 ( <a href="#">HSPB2 Products</a> )  |
| Background:       | <p>Synonyms: MKBP, HSP27, Hs.78846, LOH11CR1K, Heat shock protein beta-2, HspB2, DMPK-binding protein</p> <p>Background: The heat shock proteins (HSPs) comprise a group of highly conserved, abundantly expressed proteins with diverse functions, including the assembly and sequestering of multi-protein complexes, transportation of nascent polypeptide chains across cellular membranes and regulation of protein folding. HSPB2 (heat shock 27 kDa protein 2), also known as HSP 27 or MKBP, is a 182 amino acid protein that belongs to the heat shock protein family and is expressed preferentially in heart and skeletal muscle. Localized to mitochondria, HSPB2 functions as an ATP-dependent chaperone protein that plays a role in the refolding of denatured proteins and may also interact with the Actin cytoskeleton and prevent apoptotic cell death. HSPB2 is abundantly expressed in several cancer cell lines, suggesting that HSPB2 may be an important factor in tumor transformation and metastasis.</p> |
| Gene ID:          | 3316  |
| UniProt:          | <a href="#">Q16082</a>  |

## Application Details

|                    |   |
|--------------------|---|
| Application Notes: | WB 1:300-5000<br>ELISA 1:500-1000<br>IHC-P 1:200-400<br>IHC-F 1:100-500<br>IF(IHC-P) 1:50-200<br>IF(IHC-F) 1:50-200<br>IF(ICC) 1:50-200 |
| Restrictions:      | For Research Use only   |

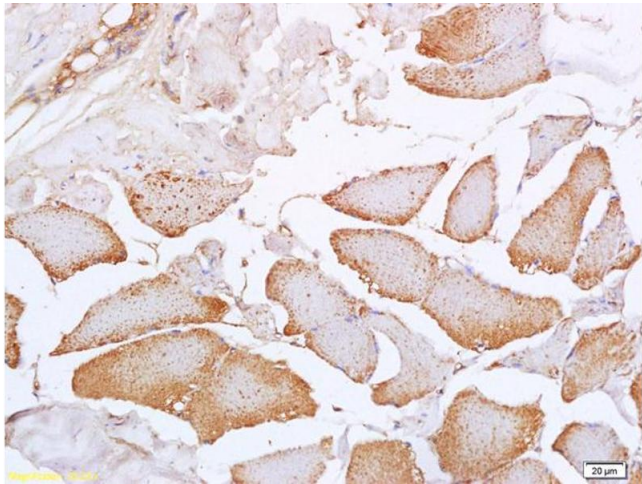
## Handling

|                    |   |
|--------------------|---|
| Format:            | Liquid  |
| Concentration:     | 1 µg/µL   |
| Buffer:            | 0.01M TBS( pH 7.4) with 1 % BSA, 0.02 % Proclin300 and 50 % Glycerol.               |
| Preservative:      | ProClin   |
| Precaution of Use: | This product contains ProClin: a POISONOUS AND HAZARDOUS SUBSTANCE, which should be |

Handling

|                  |   |
|------------------|---|
|                  | handled by trained staff only.  |
| Storage:         | 4 °C,-20 °C   |
| Storage Comment: | Shipped at 4°C. Store at -20°C for one year. Avoid repeated freeze/thaw cycles. |
| Expiry Date:     | 12 months   |

Images



Immunohistochemistry

**Image 1.** Formalin-fixed and paraffin embedded rat skeletal muscle labeled with Anti-HSPB2 Polyclonal Antibody, Unconjugated (ABIN1387534) at 1:200, followed by conjugation to the secondary antibody and DAB staining.