

Datasheet for ABIN1387553
anti-MLLT11 antibody (AA 41-90)[Go to Product page](#)

2 Images

Overview

Quantity:	100 µL
Target:	MLLT11
Binding Specificity:	AA 41-90
Reactivity:	Human
Host:	Rabbit
Clonality:	Polyclonal
Conjugate:	This MLLT11 antibody is un-conjugated
Application:	ELISA, Immunofluorescence (Cultured Cells) (IF (cc)), Immunofluorescence (Paraffin-embedded Sections) (IF (p)), Immunohistochemistry (Frozen Sections) (IHC (fro)), Immunohistochemistry (Paraffin-embedded Sections) (IHC (p))

Product Details

Immunogen:	KLH conjugated synthetic peptide derived from human MLLT11
Isotype:	IgG
Cross-Reactivity:	Human
Predicted Reactivity:	Mouse,Rat,Dog,Cow,Pig,Horse,Rabbit
Purification:	Purified by Protein A.

Target Details

Target:	MLLT11
---------	--------

Target Details

Alternative Name: MLLT11 ([MLLT11 Products](#))

Background: Synonyms: AF1Q, ALL1 fused gene from chromosome 1q, MLLT 11, MLLT-11, Myeloid/lymphoid or mixed lineage leukemia trithorax homolog, Drosophila translocated to 11, Protein AF1q, RP11 316M1.10.

Background: The gene encoding the Mixed-Lineage Leukemia (MLL) proteins is located on chromosome 11q23. Chromosomal translocations involving band 11q23 result in rogue activator proteins that are associated with approximately 10 % of patients with acute lymphoblastic leukemia (ALL) and 5 % of patients with acute myeloid leukemia (AML). Most patients affected are less than 1 year of age. MLLT11, also known as mixed-lineage leukemia translocated to 11 or AF1q, is a 90 amino acid MLL fusion partner. Based on the expression patterns of MLLT11, it is thought that MLLT11 plays a role in leukemogenesis and, specifically, the progression of acute monocytic leukemia (AML). Also, expressed in embryonic brain cortex, MLLT11 is upregulated during neuronal differentiation and is thought to play a role in the development of the central nervous system. Finally, MLLT11 has been shown to be differentially expressed in highly metastatic cells, in comparison with non-metastatic parent cells. Such findings suggest a role of MLLT11 in tumorigenesis.

Gene ID: 10962

Application Details

Application Notes: ELISA 1:500-1000
IHC-P 1:200-400
IHC-F 1:100-500
IF(IHC-P) 1:50-200
IF(IHC-F) 1:50-200
IF(ICC) 1:50-200

Restrictions: For Research Use only

Handling

Format: Liquid

Concentration: 1 µg/µL

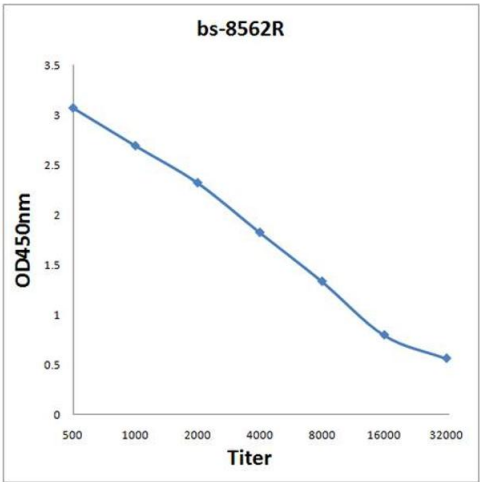
Buffer: 0.01M TBS(pH 7.4) with 1 % BSA, 0.02 % Proclin300 and 50 % Glycerol.

Preservative: ProClin

Handling

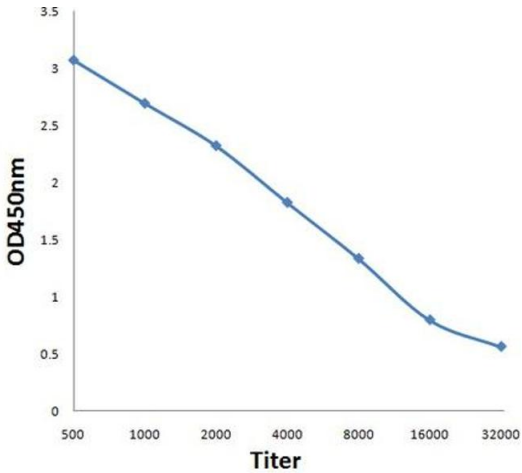
Precaution of Use:	This product contains ProClin: a POISONOUS AND HAZARDOUS SUBSTANCE, which should be handled by trained staff only.
Storage:	4 °C,-20 °C
Storage Comment:	Shipped at 4°C. Store at -20°C for one year. Avoid repeated freeze/thaw cycles.
Expiry Date:	12 months

Images



ELISA

Image 1. Antigen: 0.2 µg/100 µL Primary: Antiserum, 1:500, 1:1000, 1:2000, 1:4000, 1:8000, 1:16000, 1:32000; Secondary: HRP conjugated Goat-Anti-Rabbit IgG at 1: 5000; TMB staining; Read the data in MicroplateReader by 450



ELISA

Image 2. Antigen: 0.2ug/100ul, Primary: Antiserum, 1:500, 1:1000, 1:2000, 1:4000, 1:8000, 1:16000, 1:32000, Secondary: HRP conjugated Goat-Anti-Rabbit IgG at 1: 5000, TMB staining, Read the data in MicroplateReader by 450nm