



Datasheet for ABIN1387571  
**anti-SLC17A7 antibody**



[Go to Product page](#)

1 Image

Overview

Quantity:	100 µL
Target:	SLC17A7
Reactivity:	Rat, Human, Mouse
Host:	Rabbit
Clonality:	Polyclonal
Conjugate:	This SLC17A7 antibody is un-conjugated
Application:	Western Blotting (WB), Immunofluorescence (Paraffin-embedded Sections) (IF (p)), Immunohistochemistry (Paraffin-embedded Sections) (IHC (p))

Product Details

Immunogen:	KLH conjugated synthetic peptide derived from human VGLUT1
Isotype:	IgG
Specificity:	The immunogen shares 100 % sequence similarity with VGLUT2.
Cross-Reactivity:	Human, Mouse, Rat
Purification:	Purified by Protein A.

Target Details

Target:	SLC17A7
Alternative Name:	VGLUT1 ( <a href="#">SLC17A7 Products</a> )
Background:	Synonyms: BNPI, Brain specic Na + dependent inorganic phosphate cotransporter, Brain specic

## Target Details

---

Na dependent inorganic phosphate cotransporter, Brain-specific Na<sup>+</sup>-dependent inorganic phosphate cotransporter, Slc17a7, Solute carrier family 17 sodium-dependent inorganic phosphate cotransporter, member 7, Solute carrier family 17 member 7, Vesicular glutamate transporter 1, VGLU1\_HUMAN, VGluT1, VGLU2\_HUMAN, VGlut2, Vesicular glutamate transporter 2.

Background: Mediates the uptake of glutamate into synaptic vesicles at presynaptic nerve terminals of excitatory neural cells. May also mediate the transport of inorganic phosphate. Involved in the regulation of retinal hyaloid vessel regression during postnatal development.

---

Gene ID: 57030

## Application Details

---

Application Notes: WB 1:300-5000  
IHC-P 1:200-400  
IF(IHC-P) 1:50-200

---

Restrictions: For Research Use only

## Handling

---

Format: Liquid

---

Concentration: 1 µg/µL

---

Buffer: 0.01M TBS( pH 7.4) with 1 % BSA, 0.02 % Proclin300 and 50 % Glycerol.

---

Preservative: ProClin

---

Precaution of Use: This product contains ProClin: a POISONOUS AND HAZARDOUS SUBSTANCE, which should be handled by trained staff only.

---

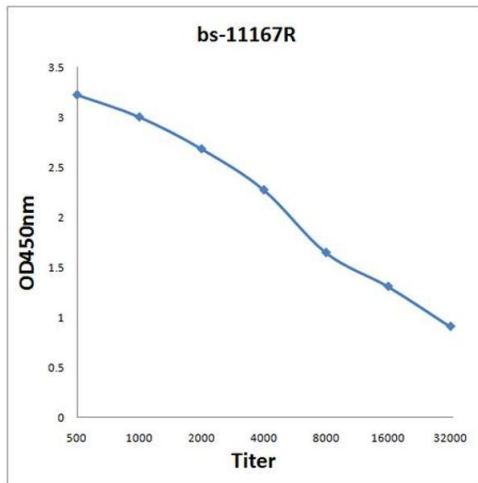
Storage: 4 °C, -20 °C

---

Storage Comment: Shipped at 4°C. Store at -20°C for one year. Avoid repeated freeze/thaw cycles.

---

Expiry Date: 12 months



## ELISA

**Image 1.** Antigen: 0.2 µg/100 µL Primary: Antiserum, 1:500, 1:1000, 1:2000, 1:4000, 1:8000, 1:16000, 1:32000; Secondary: HRP conjugated Goat-Anti-Rabbit IgG at 1:5000; TMB staining; Read the data in MicroplateReader by 450