

Datasheet for ABIN1387575
anti-RFC1 antibody (AA 401-500)[Go to Product page](#)

1 Image

Overview

Quantity:	100 µL
Target:	RFC1
Binding Specificity:	AA 401-500
Reactivity:	Human, Mouse
Host:	Rabbit
Clonality:	Polyclonal
Conjugate:	This RFC1 antibody is un-conjugated
Application:	Western Blotting (WB), ELISA, Immunofluorescence (Cultured Cells) (IF (cc)), Immunofluorescence (Paraffin-embedded Sections) (IF (p)), Immunohistochemistry (Paraffin- embedded Sections) (IHC (p)), Immunohistochemistry (Frozen Sections) (IHC (fro)), Immunocytochemistry (ICC)

Product Details

Immunogen:	KLH conjugated synthetic peptide derived from human RFC1
Isotype:	IgG
Cross-Reactivity:	Human, Mouse
Predicted Reactivity:	Rat,Dog,Cow,Pig,Horse,Chicken,Rabbit
Purification:	Purified by Protein A.

Target Details

Target:	RFC1
---------	------

Target Details

Alternative Name:	RFC1 (RFC1 Products)
Background:	<p>Synonyms: DNA binding Protein PO GA, DNA-binding protein PO-GA, MHC binding factor beta, MHCBFB, RECC1, Replication factor C 140 kDa subunit, Replication factor C, Replication factor C large subunit, Replication factor C subunit 1, Replication factor C1, RF-C 140 kDa subunit, RFC1, RFC1_HUMAN, RFC140, RFC140 Replication Factor C 140 kDa subunit, A1 140 kDa subunit, A1 P145 Activator 1 large subunit, Activator 1 140 kDa subunit, Activator 1 large subunit, Activator 1 subunit 1.</p> <p>Background: Replication factor C (RFC) is an essential DNA polymerase accessory protein that is required for numerous aspects of DNA metabolism, including DNA replication, DNA repair and telomere metabolism. RFC is a heteropentameric complex that recognizes a primer on a template DNA, binds to a primer terminus and loads proliferating cell nuclear antigen (PCNA) onto DNA at primer-template junctions in an ATP-dependent reaction. All five of the RFC subunits share a set of related sequences (RFC boxes) that include nucleotide-binding consensus sequences. Four of the five RFC genes (including RFC1, RFC2, RFC3 and RFC4) have consensus ATP-binding motifs. The small RFC proteins, RFC2, RFC3, RFC4 and RFC5, interact with Rad24, whereas the RFC1 subunit does not. RFC1 is a substrate for caspase-3 in vitro and is cleaved by a caspase-3-like protease during FAS-mediated apoptosis. In addition, phosphorylation of the PCNA binding domain of RFC1 by Ca²⁺/calmodulin-dependent protein kinase II (CaMKII) inhibits DNA synthesis. The human RFC1 gene maps to chromosome 4p14 and encodes the RFC1 subunit.</p>
Gene ID:	5981
UniProt:	P35251
Pathways:	Telomere Maintenance , DNA Damage Repair , DNA Replication , Synthesis of DNA , Dicarboxylic Acid Transport

Application Details

Application Notes:	WB 1:300-5000
	ELISA 1:500-1000
	IHC-P 1:200-400
	IHC-F 1:100-500
	IF(IHC-P) 1:50-200
	IF(IHC-F) 1:50-200
	IF(ICC) 1:50-200
	ICC 1:100-500

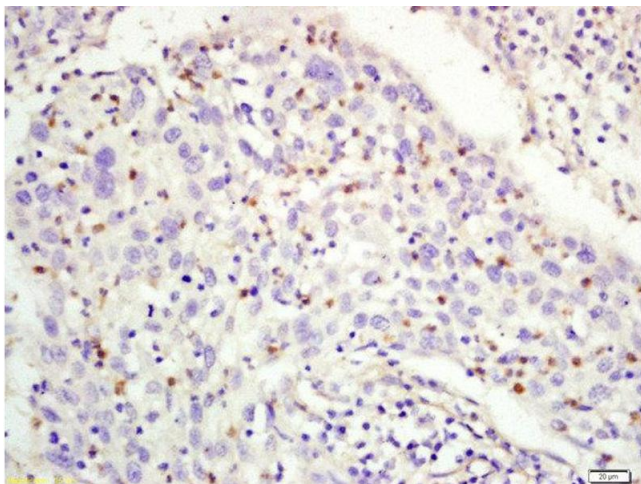
Application Details

Restrictions: For Research Use only

Handling

Format:	Liquid
Concentration:	1 µg/µL
Buffer:	0.01M TBS(pH 7.4) with 1 % BSA, 0.02 % Proclin300 and 50 % Glycerol.
Preservative:	ProClin
Precaution of Use:	This product contains ProClin: a POISONOUS AND HAZARDOUS SUBSTANCE, which should be handled by trained staff only.
Storage:	4 °C, -20 °C
Storage Comment:	Shipped at 4°C. Store at -20°C for one year. Avoid repeated freeze/thaw cycles.
Expiry Date:	12 months

Images



Immunohistochemistry (Paraffin-embedded Sections)

Image 1. Formalin-fixed and paraffin embedded human laryngeal cancer labeled with Rabbit Anti-RFC1 Polyclonal Antibody, Unconjugated (ABIN1387575) at 1:200 followed by conjugation to the secondary antibody and DAB staining