

Datasheet for ABIN1387578
anti-DAB1 antibody (pTyr198)[Go to Product page](#)

1 Image

Overview

Quantity:	100 µL
Target:	DAB1
Binding Specificity:	pTyr198
Reactivity:	Rat
Host:	Rabbit
Clonality:	Polyclonal
Conjugate:	This DAB1 antibody is un-conjugated
Application:	Western Blotting (WB), ELISA, Immunofluorescence (Cultured Cells) (IF (cc)), Immunofluorescence (Paraffin-embedded Sections) (IF (p)), Immunohistochemistry (Paraffin-embedded Sections) (IHC (p)), Immunohistochemistry (Frozen Sections) (IHC (fro)), Immunocytochemistry (ICC)

Product Details

Immunogen:	KLH conjugated synthetic phosphopeptide derived from human Dab1 around the phosphorylation site of Tyr198 [V(p-Y)QY]
Isotype:	IgG
Cross-Reactivity:	Rat
Predicted Reactivity:	Human,Mouse,Dog,Cow,Pig,Horse,Chicken,Rabbit
Purification:	Purified by Protein A.

Target Details

Target:	DAB1
Alternative Name:	Dab1 (DAB1 Products)
Background:	<p>Synonyms: Dab1 phospho Y198, Dab1 Tyr198 , Dab 1, Dab1, Dab-1, DAB1_HUMAN, Disabled homolog 1, Disabled homolog 1 Drosophila, Scm, Scr, Scrambler, Yot, Yotari.</p> <p>Background: Dab1, a homolog of the Drosophila Disabled protein, is an adaptor protein involved in neural development. This cytoplasmic protein is tyrosine-phosphorylated during rapid expansion of the developing nervous system, and it is thought to interact with other proteins via a domain similar to the PTB domains of the Shc family. Dab1 has been shown to interact with the SH2 domains of Src, Fyn and Abl (1). Mutations in Dab1 result in widespread abnormalities in the brain, similar to those seen in Reelin mutants (2). Reelin is a secreted protein thought to play a role in directing migrating neurons (3). Evidence suggests that Dab1 functions downstream of Reelin in a signaling pathway involved in positioning cells in the developing brain (4). Dab2 (also designated DOC-2) is a mitogen-responsive phosphoprotein that binds the SH3 domain of Grb2, and it is thought to be a negative regulator of growth (5).</p>

Application Details

Application Notes:	WB 1:300-5000 ELISA 1:500-1000 IHC-P 1:200-400 IHC-F 1:100-500 IF(IHC-P) 1:50-200 IF(IHC-F) 1:50-200 IF(ICC) 1:50-200 ICC 1:100-500
Restrictions:	For Research Use only

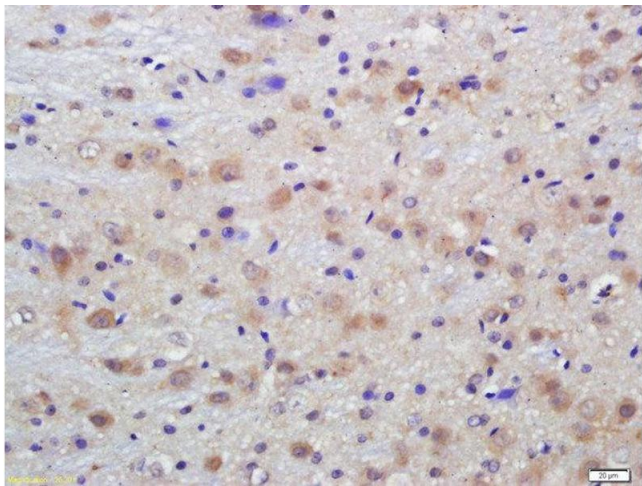
Handling

Format:	Liquid
Concentration:	1 µg/µL
Buffer:	0.01M TBS(pH 7.4) with 1 % BSA, 0.02 % Proclin300 and 50 % Glycerol.
Preservative:	ProClin
Precaution of Use:	This product contains ProClin: a POISONOUS AND HAZARDOUS SUBSTANCE, which should be

Handling

	handled by trained staff only.
Storage:	4 °C,-20 °C
Storage Comment:	Shipped at 4°C. Store at -20°C for one year. Avoid repeated freeze/thaw cycles.
Expiry Date:	12 months

Images



Immunohistochemistry (Paraffin-embedded Sections)

Image 1. Formalin-fixed and paraffin embedded rat brain labeled with Anti-Phospho-Dab1 (Tyr198) Polyclonal Antibody, Unconjugated at 1:200 followed by conjugation to the secondary antibody and DAB staining