



[Go to Product page](#)

Datasheet for ABIN1387605
anti-STIM1 antibody (AA 85-180)

1 Image

Overview

Quantity:	100 µL
Target:	STIM1
Binding Specificity:	AA 85-180
Reactivity:	Rat
Host:	Rabbit
Clonality:	Polyclonal
Conjugate:	This STIM1 antibody is un-conjugated
Application:	ELISA, Immunohistochemistry (Paraffin-embedded Sections) (IHC (p)), Immunofluorescence (Cultured Cells) (IF (cc)), Immunofluorescence (Paraffin-embedded Sections) (IF (p)), Immunohistochemistry (Frozen Sections) (IHC (fro))

Product Details

Immunogen:	KLH conjugated synthetic peptide derived from human STIM1
Isotype:	IgG
Specificity:	May cross react with STIM2
Cross-Reactivity:	Rat
Predicted Reactivity:	Human,Mouse,Dog,Cow,Pig,Horse,Chicken,Rabbit
Purification:	Purified by Protein A.

Target Details

Target:	STIM1
Alternative Name:	STIM1 (STIM1 Products)
Background:	<p>Synonyms: GOK, TAM, TAM1, IMD10, STRMK, D11S4896E, Stromal interaction molecule 1, STIM1</p> <p>Background: Plays a role in mediating store-operated Ca(2+) entry (SOCE), a Ca(2+) influx following depletion of intracellular Ca(2+) stores. Acts as Ca(2+) sensor in the endoplasmic reticulum via its EF-hand domain. Upon Ca(2+) depletion, translocates from the endoplasmic reticulum to the plasma membrane where it activates the Ca(2+) release-activated Ca(2+) (CRAC) channel subunit, TMEM142A/ORAI1.</p>
Gene ID:	6786
UniProt:	Q13586
Pathways:	TCR Signaling , BCR Signaling

Application Details

Application Notes:	ELISA 1:500-1000 IHC-P 1:200-400 IHC-F 1:100-500 IF(IHC-P) 1:50-200 IF(IHC-F) 1:50-200 IF(ICC) 1:50-200
Restrictions:	For Research Use only

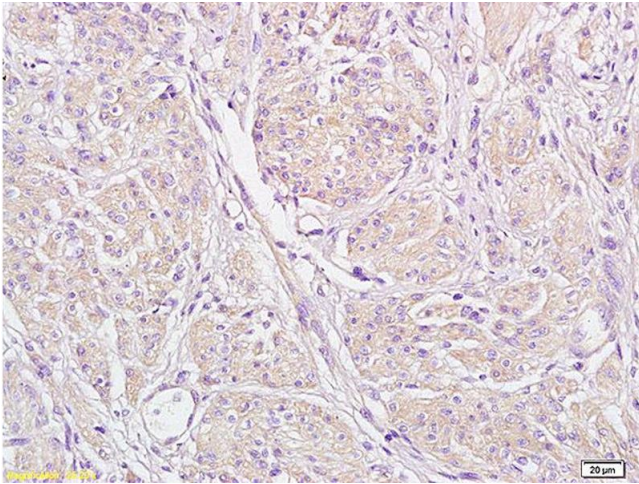
Handling

Format:	Liquid
Concentration:	1 µg/µL
Buffer:	0.01M TBS(pH 7.4) with 1 % BSA, 0.02 % Proclin300 and 50 % Glycerol.
Preservative:	ProClin
Precaution of Use:	This product contains ProClin: a POISONOUS AND HAZARDOUS SUBSTANCE, which should be handled by trained staff only.
Storage:	4 °C,-20 °C
Storage Comment:	Shipped at 4°C. Store at -20°C for one year. Avoid repeated freeze/thaw cycles.

Handling

Expiry Date: 12 months

Images



Immunohistochemistry

Image 1. Formalin-fixed and paraffin embedded human endometrial carcinoma labeled with Anti-STIM1 Polyclonal Antibody, Unconjugated (ABIN1387605) at 1:200 followed by conjugation to the secondary antibody and DAB staining