



Datasheet for ABIN1387607
anti-KIAA1522 antibody (AA 101-250)



[Go to Product page](#)

2 Images

1 Publication

Overview

| | |
|----------------------|--|
| Quantity: | 100 µL |
| Target: | KIAA1522 |
| Binding Specificity: | AA 101-250 |
| Reactivity: | Human |
| Host: | Rabbit |
| Clonality: | Polyclonal |
| Conjugate: | This KIAA1522 antibody is un-conjugated |
| Application: | Western Blotting (WB), ELISA, Immunocytochemistry (ICC), Immunofluorescence (Cultured Cells) (IF (cc)), Immunofluorescence (Paraffin-embedded Sections) (IF (p)), Immunohistochemistry (Frozen Sections) (IHC (fro)) |

Product Details

| | |
|-----------------------|--|
| Immunogen: | KLH conjugated synthetic peptide derived from human KIAA1522 |
| Isotype: | IgG |
| Cross-Reactivity: | Human |
| Predicted Reactivity: | Mouse,Rat,Dog,Cow,Pig,Horse,Chicken,Rabbit |
| Purification: | Purified by Protein A. |

Target Details

| | |
|---------|----------|
| Target: | KIAA1522 |
|---------|----------|

Target Details

Alternative Name: KIAA1522 ([KIAA1522 Products](#))

Background: Synonyms: K1522_HUMAN, Kiaa1522, Uncharacterized protein KIAA1522.
Background: KIAA1522 is a 1,035 amino acid protein that exists as three alternatively spliced isoforms and is encoded by a gene that maps to human chromosome 1p35.1. Chromosome 1 spans 260 million base pairs, contains over 3,000 genes and comprises nearly 8 % of the human genome. Chromosome 1 houses a large number of disease-associated genes, including those that are involved in familial adenomatous polyposis, Stickler syndrome, Parkinson's disease, Gaucher disease, schizophrenia and Usher syndrome. Aberrations in chromosome 1 are found in a variety of cancers, including head and neck cancer, malignant melanoma and multiple myeloma.

Gene ID: 57648

Application Details

Application Notes: WB 1:300-5000
ELISA 1:500-1000
IHC-F 1:100-500
IF(IHC-P) 1:50-200
IF(IHC-F) 1:50-200
IF(ICC) 1:50-200
ICC 1:100-500

Restrictions: For Research Use only

Handling

Format: Liquid

Concentration: 1 µg/µL

Buffer: 0.01M TBS(pH 7.4) with 1 % BSA, 0.02 % Proclin300 and 50 % Glycerol.

Preservative: ProClin

Precaution of Use: This product contains ProClin: a POISONOUS AND HAZARDOUS SUBSTANCE, which should be handled by trained staff only.

Storage: 4 °C, -20 °C

Storage Comment: Shipped at 4°C. Store at -20°C for one year. Avoid repeated freeze/thaw cycles.

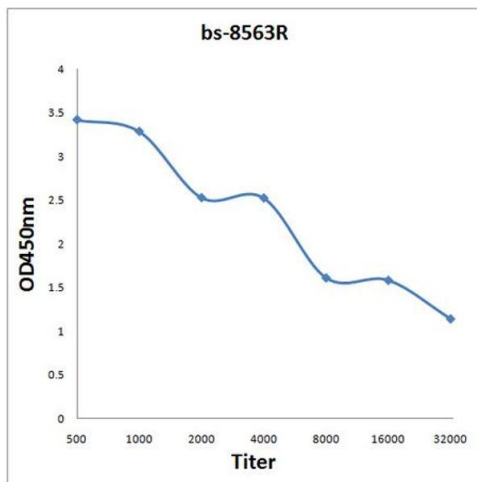
Handling

Expiry Date: 12 months

Publications

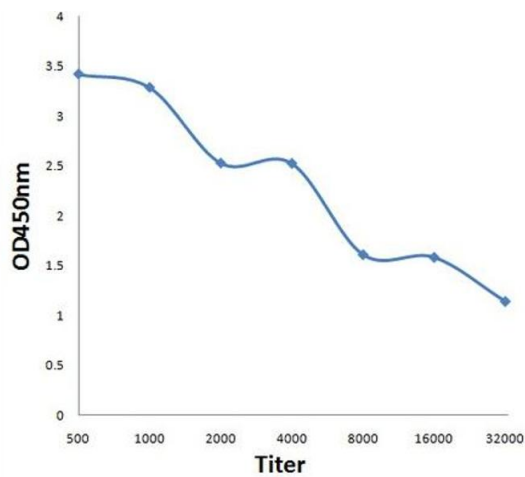
Product cited in: Liu, Yang, Cao, Jiang, Hao, Xu, Cai, Wang: "KIAA1522 is a novel prognostic biomarker in patients with non-small cell lung cancer." in: **Scientific reports**, Vol. 6, pp. 24786, (2017) ([PubMed](#)).

Images



ELISA

Image 1. Antigen: 2 µg/100 µL Primary: Antiserum, 1:500, 1:1000, 1:2000, 1:4000, 1:8000, 1:16000, 1:32000; Secondary: HRP conjugated Rabbit Anti-Goat IgG at 1: 5000; TMB staining Read the data in Microplate Reader by 450nm.



ELISA

Image 2. Antigen: 0.2ug/100ul, Primary: Antiserum, 1:500, 1:1000, 1:2000, 1:4000, 1:8000, 1:16000, 1:32000, Secondary: HRP conjugated Goat-Anti-Rabbit IgG at 1: 5000, TMB staining, Read the data in MicroplateReader by 450nm