

Datasheet for ABIN1387612
anti-BASP1 antibody (AA 3-100)[Go to Product page](#)

4 Images

Overview

Quantity:	100 µL
Target:	BASP1
Binding Specificity:	AA 3-100
Reactivity:	Human, Mouse, Rat
Host:	Rabbit
Clonality:	Polyclonal
Conjugate:	This BASP1 antibody is un-conjugated
Application:	ELISA, Immunofluorescence (Cultured Cells) (IF (cc)), Immunofluorescence (Paraffin-embedded Sections) (IF (p)), Immunocytochemistry (ICC), Immunohistochemistry (Frozen Sections) (IHC (fro))

Product Details

Immunogen:	KLH conjugated synthetic peptide derived from human BASP1/Nap22
Isotype:	IgG
Cross-Reactivity:	Human, Mouse, Rat
Predicted Reactivity:	Dog,Cow,Pig,Horse,Chicken,Rabbit
Purification:	Purified by Protein A.

Target Details

Target:	BASP1
---------	-------

Target Details

Alternative Name:	BASP1 (BASP1 Products)
Background:	<p>Synonyms: CAP23, NAP22, CAP-23, NAP-22, Brain acid soluble protein 1, 22 kDa neuronal tissue-enriched acidic protein, Neuronal axonal membrane protein NAP-22, BASP1</p> <p>Background: Neuronal axonal membrane protein Nap-22, also designated neuronal tissue-enriched acidic protein or brain acid soluble protein (BASP1), is a Ca²⁺-dependent calmodulin-binding protein that is important for neuronal sprouting and plasticity. Nap-22 is abundant in brain nerve terminals and is also present in significant amounts in kidney, testis and lymphoid tissue. Nap-22 undergoes N-terminal myristoylation for membrane localization. It has been characterized as a major protein of neuronal rafts, which are known to preferentially bind membranes containing cholesterol. Nap-22 is a crucial protein active in neurite outgrowth and synaptic plasticity.</p>
Gene ID:	10409
UniProt:	P80723

Application Details

Application Notes:	<p>WB 1:300-5000</p> <p>ELISA 1:500-1000</p> <p>IHC-P 1:200-400</p> <p>IHC-F 1:100-500</p> <p>IF(IHC-P) 1:50-200</p> <p>IF(IHC-F) 1:50-200</p> <p>IF(ICC) 1:50-200</p> <p>ICC 1:100-500</p>
Restrictions:	For Research Use only

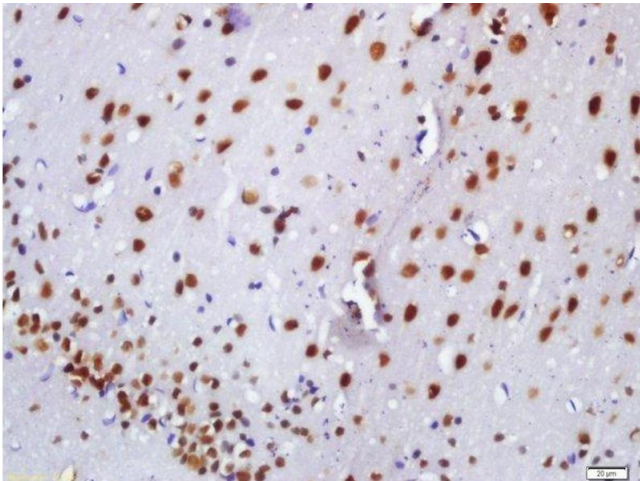
Handling

Format:	Liquid
Concentration:	1 µg/µL
Buffer:	0.01M TBS(pH 7.4) with 1 % BSA, 0.02 % Proclin300 and 50 % Glycerol.
Preservative:	ProClin
Precaution of Use:	This product contains ProClin: a POISONOUS AND HAZARDOUS SUBSTANCE, which should be handled by trained staff only.

Handling

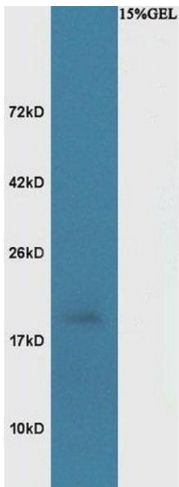
Storage:	4 °C,-20 °C
Storage Comment:	Shipped at 4°C. Store at -20°C for one year. Avoid repeated freeze/thaw cycles.
Expiry Date:	12 months

Images



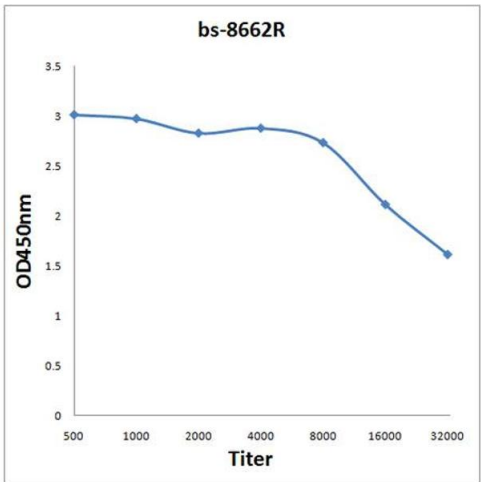
Immunohistochemistry (Paraffin-embedded Sections)

Image 1. Formalin-fixed and paraffin embedded rat brain labeled with Anti-BASP1 Polyclonal Antibody, Unconjugated at 1:200 followed by conjugation to the secondary antibody and DAB staining



Western Blotting

Image 2. Mouse brain lysates probed with Rabbit Anti-BASP1 Polyclonal Antibody, Unconjugated at 1:3000 for 90 min at 37°C.



ELISA

Image 3. Antigen: 0.2 µg/100 µL Primary: Antiserum, 1:500, 1:1000, 1:2000, 1:4000, 1:8000, 1:16000, 1:32000; Secondary: HRP conjugated Goat-Anti-Rabbit IgG at 1: 5000; TMB staining; Read the data in MicroplateReader by 450

Images

Please check the [product details page](#) for more images. Overall 4 images are available for ABIN1387612.