

Datasheet for ABIN1387623
anti-Geminin antibody (AA 110-142)[Go to Product page](#)

2 Images

Overview

Quantity:	100 µL
Target:	Geminin (GMNN)
Binding Specificity:	AA 110-142
Reactivity:	Human, Mouse, Rat
Host:	Rabbit
Clonality:	Polyclonal
Conjugate:	This Geminin antibody is un-conjugated
Application:	Western Blotting (WB), Immunohistochemistry (Paraffin-embedded Sections) (IHC (p)), Immunofluorescence (Paraffin-embedded Sections) (IF (p))

Product Details

Immunogen:	KLH conjugated synthetic peptide derived from human Geminin
Isotype:	IgG
Cross-Reactivity:	Human, Mouse, Rat
Purification:	Purified by Protein A.

Target Details

Target:	Geminin (GMNN)
Alternative Name:	Geminin (GMNN Products)
Background:	Synonyms: Gem, Geminin, GMNN

Target Details

Background: Inhibits DNA replication by preventing the incorporation of MCM complex into pre-replication complex (pre-RC). It is degraded during the mitotic phase of the cell cycle. Its destruction at the metaphase-anaphase transition permits replication in the succeeding cell cycle. Inhibits the transcriptional activity of a subset of Hox proteins, enrolling them in cell proliferative control.

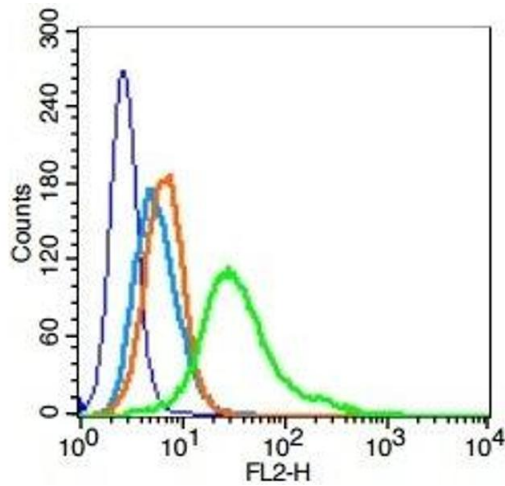
Gene ID:	51053
UniProt:	O75496
Pathways:	EGFR Signaling Pathway , DNA Replication

Application Details

Application Notes:	WB 1:300-5000 IHC-P 1:200-400 IF(IHC-P) 1:50-200
Restrictions:	For Research Use only

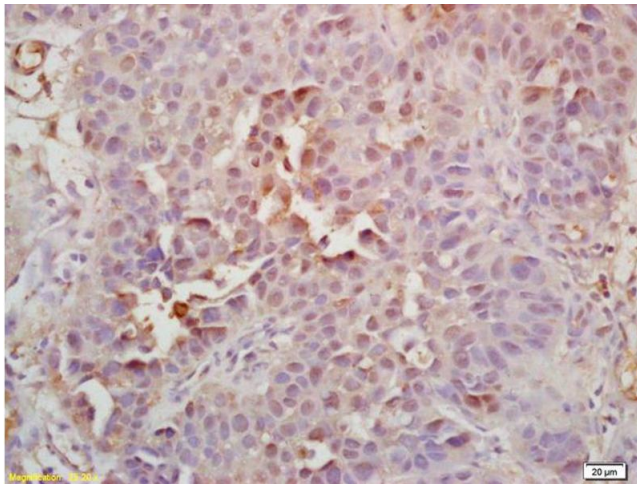
Handling

Format:	Liquid
Concentration:	1 µg/µL
Buffer:	0.01M TBS(pH 7.4) with 1 % BSA, 0.02 % Proclin300 and 50 % Glycerol.
Preservative:	ProClin
Precaution of Use:	This product contains ProClin: a POISONOUS AND HAZARDOUS SUBSTANCE, which should be handled by trained staff only.
Storage:	4 °C,-20 °C
Storage Comment:	Shipped at 4°C. Store at -20°C for one year. Avoid repeated freeze/thaw cycles.
Expiry Date:	12 months



Flow Cytometry

Image 1. Human Hela cells probed with Geminin Polyclonal Antibody, Unconjugated (green) at 1:100 for 30 minutes followed by a PE conjugated secondary antibody compared to unstained cells (blue), secondary only (light blue), and isotype control (orange).



Immunohistochemistry

Image 2. Formalin-fixed and paraffin embedded human bladder carcinoma labeled with Rabbit Anti Geminin Polyclonal Antibody, Unconjugated (ABIN1387623) at 1:200 followed by conjugation to the secondary antibody and DAB staining