

Datasheet for ABIN1387628  
**anti-FAM189B antibody**[Go to Product page](#)

## 1 Image

## Overview

Quantity:	100 µL
Target:	FAM189B
Reactivity:	Human, Mouse, Rat
Host:	Rabbit
Clonality:	Polyclonal
Conjugate:	This FAM189B antibody is un-conjugated
Application:	Western Blotting (WB), Immunofluorescence (Paraffin-embedded Sections) (IF (p)), Immunohistochemistry (Paraffin-embedded Sections) (IHC (p))

## Product Details

Immunogen:	KLH conjugated synthetic peptide derived from human C1orf2
Isotype:	IgG
Cross-Reactivity:	Human, Mouse, Rat
Purification:	Purified by Protein A.

## Target Details

Target:	FAM189B
Alternative Name:	C1orf2 ( <a href="#">FAM189B Products</a> )
Background:	Synonyms: Chromosome 1 open reading frame 2, COTE1, F189B_HUMAN, FAM189B, Family with sequence similarity 189 member B, Hypothetical protein LOC10712, Protein COTE1, Protein FAM189B.

## Target Details

Background: COTE1, also known as FAM189B (family with sequence similarity 189, member B), is a 668 amino acid multi-pass membrane protein that is widely expressed and belongs to the FAM189 family. Existing as two alternatively spliced isoforms, COTE1 is encoded by a gene that maps to human chromosome 1q22. As the largest human chromosome, chromosome 1 spans about 260 million base pairs and makes up approximately 8 % of the human genome.

Hutchinson-Gilford progeria, a rare aging disorder, is associated with the LMNA gene which is located on chromosome 1. Familial adenomatous polyposis, Stickler syndrome, Parkinsons, Gaucher disease and Usher syndrome are also associated with chromosome 1. Aberrations in chromosome 1 are found in a variety of cancers including head and neck cancer, malignant melanoma and multiple myeloma.

Gene ID: 10712

## Application Details

Application Notes: WB 1:300-5000  
IHC-P 1:200-400  
IF(IHC-P) 1:50-200

Restrictions: For Research Use only

## Handling

Format: Liquid

Concentration: 1 µg/µL

Buffer: 0.01M TBS( pH 7.4) with 1 % BSA, 0.02 % Proclin300 and 50 % Glycerol.

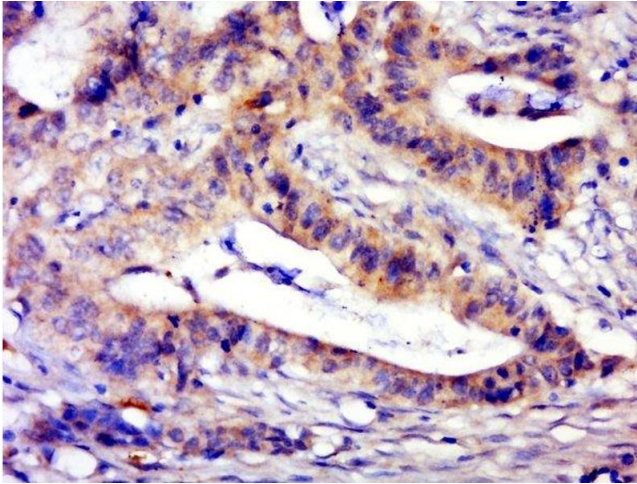
Preservative: ProClin

Precaution of Use: This product contains ProClin: a POISONOUS AND HAZARDOUS SUBSTANCE, which should be handled by trained staff only.

Storage: 4 °C, -20 °C

Storage Comment: Shipped at 4°C. Store at -20°C for one year. Avoid repeated freeze/thaw cycles.

Expiry Date: 12 months



#### Immunohistochemistry (Paraffin-embedded Sections)

**Image 1.** Paraformaldehyde-fixed, paraffin embedded human cervical carcinoma, Antigen retrieval by boiling in sodium citrate buffer (pH6.0) for 15min, Block endogenous peroxidase by 3% hydrogen peroxide for 20 minutes, Blocking buffer (normal goat serum) at 37°C for 30min, Antibody incubation with C1orf2 Polyclonal Antibody, Unconjugated at 1:500 overnight at 4°C, followed by a conjugated secondary for 20 minutes and DAB staining.