



[Go to Product page](#)

Datasheet for ABIN1387653
anti-KLF7 antibody (AA 131-210)

1 Image

Overview

Quantity:	100 µL
Target:	KLF7
Binding Specificity:	AA 131-210
Reactivity:	Mouse
Host:	Rabbit
Clonality:	Polyclonal
Conjugate:	This KLF7 antibody is un-conjugated
Application:	ELISA, Western Blotting (WB), Immunocytochemistry (ICC), Immunohistochemistry (Paraffin-embedded Sections) (IHC (p)), Immunofluorescence (Cultured Cells) (IF (cc)), Immunofluorescence (Paraffin-embedded Sections) (IF (p)), Immunohistochemistry (Frozen Sections) (IHC (fro))

Product Details

Immunogen:	KLH conjugated synthetic peptide derived from human KLF7
Isotype:	IgG
Cross-Reactivity:	Mouse
Predicted Reactivity:	Human,Rat,Dog,Cow,Sheep,Pig,Horse,Chicken,Rabbit
Purification:	Purified by Protein A.

Target Details

Target:	KLF7
---------	------

Target Details

Alternative Name: KLF7 ([KLF7 Products](#))

Background: Synonyms: KLF7, KLF7_HUMAN, Krueppel like factor 7, Krueppel-like factor 7, Kruppel like factor 7, Ubiquitous krueppel like factor, Ubiquitous krueppel-like factor, UKLF.

Background: KLF7 is a transcriptional activator that belongs to the Kr_oppel C2H2-type zinc finger protein family. KLF7 targets promotor regions bearing CACCC elements in order to regulate transcription. It is believed that KLF7 is an important element for regulation of differentiation and the development of nervous systems. Specifically, increased expression of KLF7 is associated with neuronal precursors exiting the cell cycle and beginning to differentiate. Overexpression of KLF7 can lead to cell cycle arrest and a decrease in DNA synthesis. Also, KLF7 is thought to regulate the expression of Trk A, the receptor for nerve growth factor, which is required for the normal growth and maturation of neurons. KLF7 is a widely expressed protein with highest expression found in brain and nervous tissue.

Application Details

Application Notes: WB 1:300-5000
ELISA 1:500-1000
IHC-P 1:200-400
IHC-F 1:100-500
IF(IHC-P) 1:50-200
IF(IHC-F) 1:50-200
IF(ICC) 1:50-200
ICC 1:100-500

Restrictions: For Research Use only

Handling

Format: Liquid

Concentration: 1 µg/µL

Buffer: 0.01M TBS(pH 7.4) with 1 % BSA, 0.02 % Proclin300 and 50 % Glycerol.

Preservative: ProClin

Precaution of Use: This product contains ProClin: a POISONOUS AND HAZARDOUS SUBSTANCE, which should be handled by trained staff only.

Storage: 4 °C, -20 °C

Handling

Storage Comment: Shipped at 4°C. Store at -20°C for one year. Avoid repeated freeze/thaw cycles.

Expiry Date: 12 months

Images

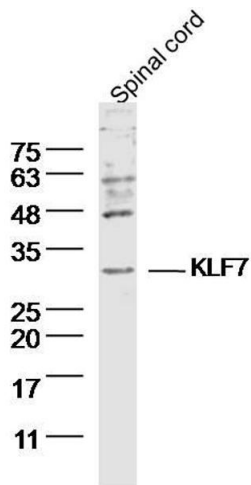


Image 1. Mouse Spinal cord lysates probed with KLF7 Polyclonal Antibody, Unconjugated at 1:300 dilution and 4°C overnight incubation. Followed by conjugated secondary antibody incubation at 1:10000 for 60 min at 37°C.