

Datasheet for ABIN1387659
anti-P2RY12 antibody (AA 141-240)[Go to Product page](#)

4 Images

Overview

Quantity:	100 µL
Target:	P2RY12
Binding Specificity:	AA 141-240
Reactivity:	Human, Mouse
Host:	Rabbit
Clonality:	Polyclonal
Conjugate:	This P2RY12 antibody is un-conjugated
Application:	Western Blotting (WB), ELISA, Immunofluorescence (Cultured Cells) (IF (cc))

Product Details

Immunogen:	KLH conjugated synthetic peptide derived from human P2Y12
Isotype:	IgG
Cross-Reactivity:	Human, Mouse
Predicted Reactivity:	Rat,Dog,Cow,Sheep,Pig,Horse,Rabbit
Purification:	Purified by Protein A.

Target Details

Target:	P2RY12
Alternative Name:	P2Y12 (P2RY12 Products)
Background:	Synonyms: HORK3, P2Y12, ADPG-R, BDPLT8, SP1999, P2T(AC), P2Y(AC), P2Y(12)R, P2Y(ADP),

Target Details

P2Y(cyc), P2Y purinoceptor 12, ADP-glucose receptor, P2Y12 platelet ADP receptor, P2RY12
Background: Receptor for ADP and ATP coupled to G-proteins that inhibit the adenylyl cyclase second messenger system. Not activated by UDP and UTP. Required for normal platelet aggregation and blood coagulation.

Gene ID: 64805

UniProt: [Q9H244](#)

Application Details

Application Notes: WB 1:300-5000
ELISA 1:500-1000
IF(ICC) 1:50-200

Restrictions: For Research Use only

Handling

Format: Liquid

Concentration: 1 µg/µL

Buffer: 0.01M TBS(pH 7.4) with 1 % BSA, 0.02 % Proclin300 and 50 % Glycerol.

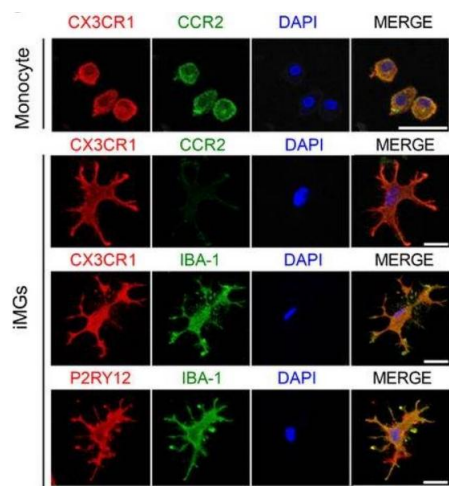
Preservative: ProClin

Precaution of Use: This product contains ProClin: a POISONOUS AND HAZARDOUS SUBSTANCE, which should be handled by trained staff only.

Storage: 4 °C,-20 °C

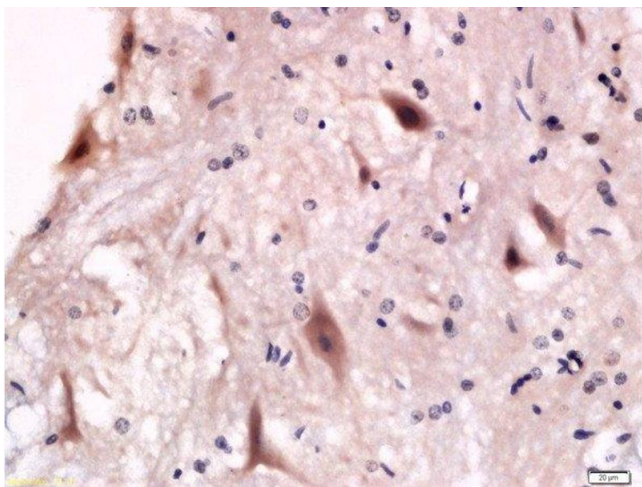
Storage Comment: Shipped at 4°C. Store at -20°C for one year. Avoid repeated freeze/thaw cycles.

Expiry Date: 12 months



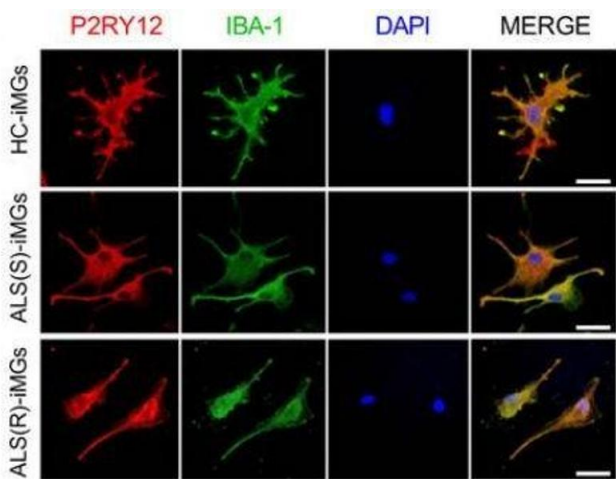
Immunocytochemistry

Image 1. iMGs expressed CX3CR1 (green) and the specific microglial markers P2RY12 (red) and IBA-1 (green), but not CCR2 (green), a marker of monocytes. DAPI (blue) was used to visualize nuclei. Source: 10.21203/rs.3.rs-29976/v1



Immunohistochemistry (Paraffin-embedded Sections)

Image 2. Formalin-fixed and paraffin embedded rat anterior horn of spinal cord labeled with Anti-P2Y12 Polyclonal Antibody, Unconjugated at 1:200 followed by conjugation to the secondary antibody and DAB staining.



Immunocytochemistry

Image 3. Immunocytochemical staining of the three groups of iMGs. iMGs with antibodies against P2RY12 (red) (ABIN1387659) and IBA-1 (green). DAPI was used to visualize nuclei. Source: 10.21203/rs.3.rs-29976/v1

Please check the [product details page](#) for more images. Overall 4 images are available for ABIN1387659.