

Datasheet for ABIN1387684  
**anti-TTC8 antibody (AA 251-330)**[Go to Product page](#)

## 1 Image

## Overview

Quantity:	100 µL
Target:	TTC8
Binding Specificity:	AA 251-330
Reactivity:	Human, Mouse, Rat
Host:	Rabbit
Clonality:	Polyclonal
Conjugate:	This TTC8 antibody is un-conjugated
Application:	Western Blotting (WB), ELISA, Flow Cytometry (FACS), Immunofluorescence (Cultured Cells) (IF (cc)), Immunofluorescence (Paraffin-embedded Sections) (IF (p)), Immunohistochemistry (Frozen Sections) (IHC (fro)), Immunohistochemistry (Paraffin-embedded Sections) (IHC (p)), Immunocytochemistry (ICC)

## Product Details

Immunogen:	KLH conjugated synthetic peptide derived from human BBS8
Isotype:	IgG
Cross-Reactivity:	Human, Mouse, Rat
Predicted Reactivity:	Dog,Cow,Sheep,Pig,Horse,Chicken,Rabbit
Purification:	Purified by Protein A.

## Target Details

Target:	TTC8
---------	------

## Target Details

Alternative Name:	BBS8/TTC8 ( <a href="#">TTC8 Products</a> )
Background:	<p>Synonyms: Bardet Biedl syndrome 8 protein, Bardet Biedl syndrome type 8, Bardet-Biedl syndrome 8 protein, BBS8, Tetratricopeptide repeat domain 8, Tetratricopeptide repeat protein 8, TPR repeat protein 8, TTC 8, Ttc8, TTC8_HUMAN.</p> <p>Background: Bardet-Biedl syndrome (BBS) is a pleiotropic genetic disorder characterized by obesity, photoreceptor degeneration, polydactyly, hypogenitalism, renal abnormalities, and developmental delay. BBS patients also have an increased risk of developing diabetes, hypertension, and congenital heart defects. BBS is a heterogeneous disorder mapping to eight genetic loci and encoding eight proteins, BBS1-BBS8. Five BBS proteins encode basal body or cilia proteins, suggesting that BBS is a ciliary dysfunction disorder. BBS2 contains two overlapping genes: BBS2L1 and BBS2L2. BBSL1 was re-named BBS7, whereas BBS2L2 independently functions as BBS1. BBS7 contains 672 amino acids and is expressed at low to moderate levels in most human tissues.</p>
Pathways:	<a href="#">Hedgehog Signaling</a>

## Application Details

Application Notes:	WB 1:300-5000 ELISA 1:500-1000 FCM 1:20-100 IHC-P 1:200-400 IHC-F 1:100-500 IF(IHC-P) 1:50-200 IF(IHC-F) 1:50-200 IF(ICC) 1:50-200 ICC 1:100-500
Restrictions:	For Research Use only

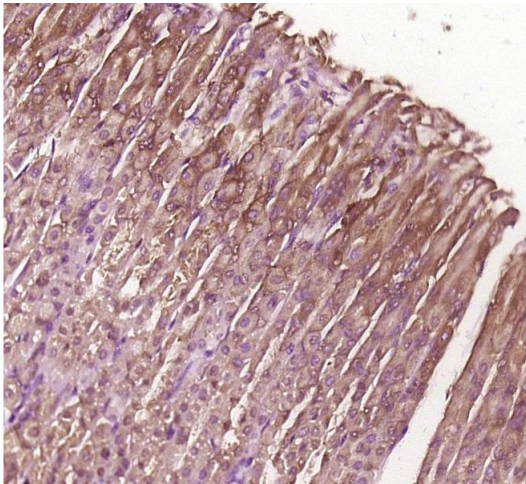
## Handling

Format:	Liquid
Concentration:	1 µg/µL
Buffer:	0.01M TBS( pH 7.4) with 1 % BSA, 0.02 % Proclin300 and 50 % Glycerol.
Preservative:	ProClin

Handling

Precaution of Use:	This product contains ProClin: a POISONOUS AND HAZARDOUS SUBSTANCE, which should be handled by trained staff only.
Storage:	4 °C,-20 °C
Storage Comment:	Shipped at 4°C. Store at -20°C for one year. Avoid repeated freeze/thaw cycles.
Expiry Date:	12 months

Images



Immunohistochemistry (Paraffin-embedded Sections)

**Image 1.** Paraformaldehyde-fixed, paraffin embedded Mouse stomach; Antigen retrieval by boiling in sodium citrate buffer (pH6.0) for 15min; Block endogenous peroxidase by 3% hydrogen peroxide for 20 minutes; Blocking buffer (normal goat serum) at 37°C for 30min; Antibody incubation with BBS8/TTC8 Polyclonal Antibody, Unconjugated (bs-11510R) at 1:400 overnight at 4°C, followed by a conjugated secondary antibody for 20 minutes and DAB staining.