

Datasheet for ABIN1387710
anti-PKC epsilon antibody (pSer729)[Go to Product page](#)

1 Image

Overview

Quantity:	100 µL
Target:	PKC epsilon (PRKCE)
Binding Specificity:	pSer729
Reactivity:	Mouse
Host:	Rabbit
Clonality:	Polyclonal
Application:	Western Blotting (WB), ELISA, Immunofluorescence (Cultured Cells) (IF (cc)), Immunofluorescence (Paraffin-embedded Sections) (IF (p)), Immunocytochemistry (ICC), Immunohistochemistry (Paraffin-embedded Sections) (IHC (p)), Immunohistochemistry (Frozen Sections) (IHC (fro))

Product Details

Immunogen:	KLH conjugated synthetic phosphopeptide derived from human PKCE around the phosphorylation site of Ser729
Isotype:	IgG
Cross-Reactivity:	Mouse
Predicted Reactivity:	Human,Rat,Dog,Cow,Sheep,Pig,Horse,Chicken,Rabbit
Purification:	Purified by Protein A.

Target Details

Target:	PKC epsilon (PRKCE)
---------	---------------------

Target Details

Alternative Name:	PKC epsilon (PRKCE Products)
Background:	<p>Synonyms: PKC epsilon phospho S729, PKC Epsilon phospho Ser729, p-PKC Epsilon Ser729, PKC-A, PKC alpha, AAG6, Aging associated gene 6, PICK 1, PKC A, PKCA, PKC A, PRKCA, Protein Kinase C alpha, Protein kinase C alpha type, KPCE_HUMAN.</p> <p>Background: Protein kinase C (PKC) is a family of serine- and threonine-specific protein kinases that can be activated by calcium and the second messenger diacylglycerol. PKC family members phosphorylate a wide variety of protein targets and are known to be involved in diverse cellular signaling pathways. PKC family members also serve as major receptors for phorbol esters, a class of tumor promoters. Each member of the PKC family has a specific expression profile and is believed to play a distinct role in cells. The protein encoded by this gene is one of the PKC family members. This kinase has been shown to be involved in many different cellular functions, such as neuron channel activation, apoptosis, cardioprotection from ischemia, heat shock response, as well as insulin exocytosis. Knockout studies in mice suggest that this kinase is important for lipopolysaccharide (LPS)-mediated signaling in activated macrophages and may also play a role in controlling anxiety-like behavior. [provided by RefSeq, Jul 2008].</p>
Gene ID:	5581
UniProt:	Q02156
Pathways:	TCR Signaling , EGFR Signaling Pathway , Neurotrophin Signaling Pathway , Positive Regulation of Peptide Hormone Secretion , Activation of Innate immune Response , Cellular Response to Molecule of Bacterial Origin , Regulation of Actin Filament Polymerization , Myometrial Relaxation and Contraction , Regulation of Carbohydrate Metabolic Process , Interaction of EGFR with phospholipase C-gamma , Thromboxane A2 Receptor Signaling

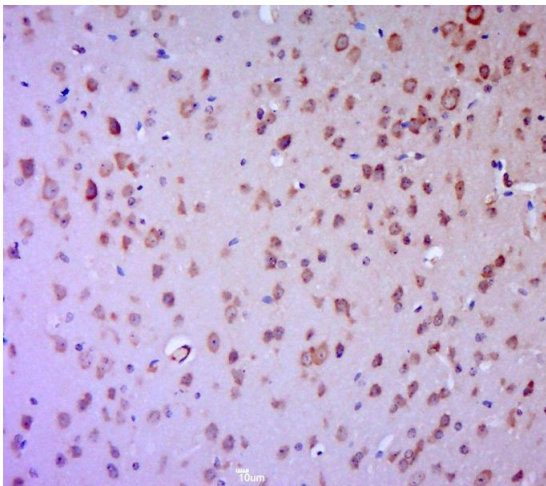
Application Details

Application Notes:	WB 1:300-5000 ELISA 1:500-1000 IHC-P 1:200-400 IHC-F 1:100-500 IF(IHC-P) 1:50-200 IF(IHC-F) 1:50-200 IF(ICC) 1:50-200 ICC 1:100-500
Restrictions:	For Research Use only

Handling

Format:	Liquid
Concentration:	1 µg/µL
Buffer:	0.01M TBS(pH 7.4) with 1 % BSA, 0.02 % Proclin300 and 50 % Glycerol.
Preservative:	ProClin
Precaution of Use:	This product contains ProClin: a POISONOUS AND HAZARDOUS SUBSTANCE, which should be handled by trained staff only.
Storage:	4 °C,-20 °C
Storage Comment:	Shipped at 4°C. Store at -20°C for one year. Avoid repeated freeze/thaw cycles.
Expiry Date:	12 months

Images



Immunohistochemistry (Paraffin-embedded Sections)

Image 1. Paraformaldehyde-fixed, paraffin embedded mouse brain , Antigen retrieval by boiling in sodium citrate buffer (pH6.0) for 15min, Block endogenous peroxidase by 3% hydrogen peroxide for 20 minutes, Blocking buffer (normal goat serum) at 37°C for 30min, Antibody incubation with PKC Epsilon(Ser729) Polyclonal Antibody, Unconjugated at 1:400 overnight at 4°C, followed by a conjugated secondary for 20 minutes and DAB staining.