

Datasheet for ABIN1387718  
**anti-IL28RA antibody (AA 51-150)**[1 Image](#)[1 Publication](#)[Go to Product page](#)

## Overview

Quantity:	100 µL
Target:	IL28RA
Binding Specificity:	AA 51-150
Reactivity:	Human
Host:	Rabbit
Clonality:	Polyclonal
Conjugate:	This IL28RA antibody is un-conjugated
Application:	Western Blotting (WB), ELISA, Immunofluorescence (Cultured Cells) (IF (cc)), Immunofluorescence (Paraffin-embedded Sections) (IF (p)), Immunohistochemistry (Paraffin- embedded Sections) (IHC (p)), Immunohistochemistry (Frozen Sections) (IHC (fro)), Immunocytochemistry (ICC)

## Product Details

Immunogen:	KLH conjugated synthetic peptide derived from human IL-28R
Isotype:	IgG
Specificity:	Predicted to also work in Rat based on sequence similarity
Cross-Reactivity:	Human
Predicted Reactivity:	Mouse,Rat,Dog,Cow,Pig,Rabbit
Purification:	Purified by Protein A.

## Target Details

Target:	IL28RA
Alternative Name:	IL-28R ( <a href="#">IL28RA Products</a> )
Background:	<p>Synonyms: IFNLR, LICR2, IL28RA, CRF2/12, IL-28R1, Interferon lambda receptor 1, IFN-lambda receptor 1, IFN-lambda-R1, Cytokine receptor class-II member 12, Cytokine receptor family 2 member 12, CRF2-12, Interleukin-28 receptor subunit alpha, IL-28 receptor subunit alpha, IL-28R-alpha, IL-28RA, Likely interleukin or cytokine receptor 2, IFNLR1</p> <p>Background: The IFNLR1/IL10RB dimer is a receptor for the cytokine ligands IFNL2 and IFNL3 and mediates their antiviral activity. The ligand/receptor complex stimulate the activation of the JAK/STAT signaling pathway leading to the expression of IFN-stimulated genes (ISG), which contribute to the antiviral state. Determines the cell type specificity of the lambda interferon action. Shows a more restricted pattern of expression in the epithelial tissues thereby limiting responses to lambda interferons primarily to epithelial cells of the respiratory, gastrointestinal, and reproductive tracts. Seems not to be essential for early virus-activated host defense in vaginal infection, but plays an important role in Toll-like receptor (TLR)-induced antiviral defense. Plays a significant role in the antiviral immune defense in the intestinal epithelium.</p>
Gene ID:	163702
UniProt:	<a href="#">Q8IU57</a>

## Application Details

Application Notes:	WB 1:300-5000 ELISA 1:500-1000 IHC-P 1:200-400 IHC-F 1:100-500 IF(IHC-P) 1:50-200 IF(IHC-F) 1:50-200 IF(ICC) 1:50-200 ICC 1:100-500
Restrictions:	For Research Use only

## Handling

Format:	Liquid
Concentration:	1 µg/µL

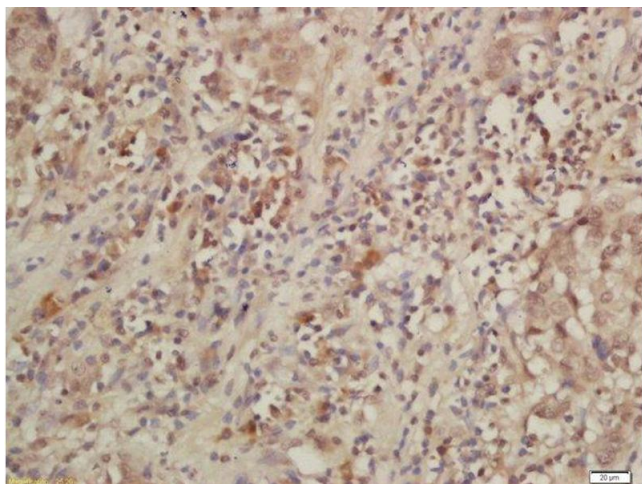
## Handling

Buffer:	0.01M TBS( pH 7.4) with 1 % BSA, 0.02 % Proclin300 and 50 % Glycerol.
Preservative:	ProClin
Precaution of Use:	This product contains ProClin: a POISONOUS AND HAZARDOUS SUBSTANCE, which should be handled by trained staff only.
Storage:	4 °C,-20 °C
Storage Comment:	Shipped at 4°C. Store at -20°C for one year. Avoid repeated freeze/thaw cycles.
Expiry Date:	12 months

## Publications

Product cited in:	McGuire, Frieling, Lo, Li, Muhammad, Lawrence, Lawrence, Cook, Lynch: "Mesenchymal stem cell-derived interleukin-28 drives the selection of apoptosis resistant bone metastatic prostate cancer." in: <b>Nature communications</b> , Vol. 12, Issue 1, pp. 723, (2021) ( <a href="#">PubMed</a> ).
-------------------	--

## Images



### Immunohistochemistry (Paraffin-embedded Sections)

**Image 1.** Formalin-fixed and paraffin embedded human larynx labeled with Rabbit Anti-IL-28R Polyclonal Antibody, Unconjugated (ABIN1387718) at 1:200 followed by conjugation to the secondary antibody and DAB staining