

Datasheet for ABIN1387727
anti-M-CSF/CSF1 antibody (AA 201-300)

5 Images

[Go to Product page](#)

Overview

Quantity:	100 µL
Target:	M-CSF/CSF1 (CSF1)
Binding Specificity:	AA 201-300
Reactivity:	Human, Mouse
Host:	Rabbit
Clonality:	Polyclonal
Conjugate:	This M-CSF/CSF1 antibody is un-conjugated
Application:	Western Blotting (WB), ELISA, Immunohistochemistry (Paraffin-embedded Sections) (IHC (p)), Immunocytochemistry (ICC), Immunofluorescence (Cultured Cells) (IF (cc)), Immunofluorescence (Paraffin-embedded Sections) (IF (p)), Immunohistochemistry (Frozen Sections) (IHC (fro))

Product Details

Immunogen:	KLH conjugated synthetic peptide derived from human MCSF
Isotype:	IgG
Cross-Reactivity:	Human, Mouse
Predicted Reactivity:	Rat,Dog,Cow,Pig,Rabbit
Purification:	Purified by Protein A.

Target Details

Target:	M-CSF/CSF1 (CSF1)
---------	-------------------

Target Details

Alternative Name:	MCSF (CSF1 Products)
Background:	Synonyms: MCSF, CSF-1, Macrophage colony-stimulating factor 1, M-CSF, Lanimostim, CSF1 Background: Cytokine that plays an essential role in the regulation of survival, proliferation and differentiation of hematopoietic precursor cells, especially mononuclear phagocytes, such as macrophages and monocytes. Promotes the release of proinflammatory chemokines, and thereby plays an important role in innate immunity and in inflammatory processes. Plays an important role in the regulation of osteoclast proliferation and differentiation, the regulation of bone resorption, and is required for normal bone development. Required for normal male and female fertility. Promotes reorganization of the actin cytoskeleton, regulates formation of membrane ruffles, cell adhesion and cell migration. Plays a role in lipoprotein clearance.
Gene ID:	1435
UniProt:	P09603
Pathways:	RTK Signaling

Application Details

Application Notes:	WB 1:300-5000 ELISA 1:500-1000 IHC-P 1:200-400 IHC-F 1:100-500 IF(IHC-P) 1:50-200 IF(IHC-F) 1:50-200 IF(ICC) 1:50-200 ICC 1:100-500
Restrictions:	For Research Use only

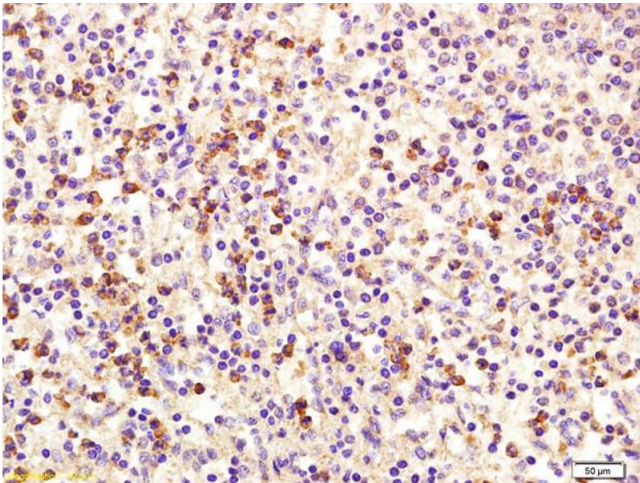
Handling

Format:	Liquid
Concentration:	1 µg/µL
Buffer:	0.01M TBS(pH 7.4) with 1 % BSA, 0.02 % Proclin300 and 50 % Glycerol.
Preservative:	ProClin
Precaution of Use:	This product contains ProClin: a POISONOUS AND HAZARDOUS SUBSTANCE, which should be handled by trained staff only.

Handling

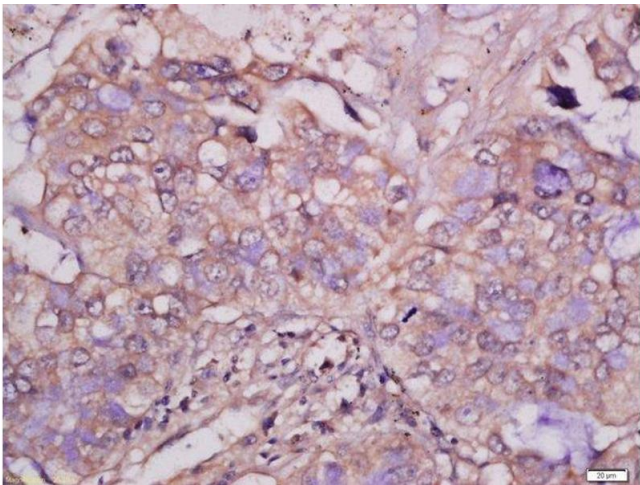
Storage:	4 °C,-20 °C
Storage Comment:	Shipped at 4°C. Store at -20°C for one year. Avoid repeated freeze/thaw cycles.
Expiry Date:	12 months

Images



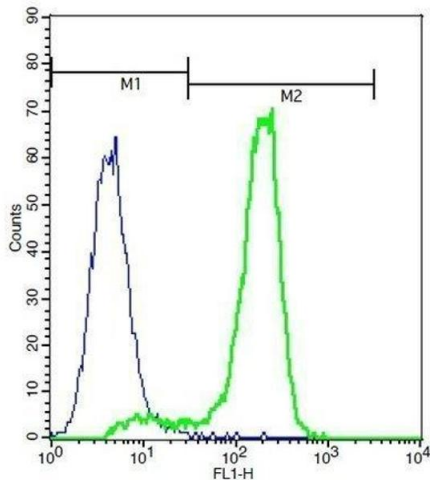
Immunohistochemistry

Image 1. Formalin-fixed and paraffin embedded human spleen labeled with Rabbit Anti MCSF/M-CSF Polyclonal Antibody, Unconjugated (ABIN1387727) at 1:200 followed by conjugation to the secondary antibody and DAB staining



Immunohistochemistry (Paraffin-embedded Sections)

Image 2. Formalin-fixed and paraffin embedded human lung carcinoma tissue labeled with Anti-MCSF Polyclonal Antibody, Unconjugated 1:400 followed by conjugation to the secondary antibody and DAB staining.



Flow Cytometry

Image 3. A549 cells probed with Rabbit Anti-MCSF Polyclonal Antibody .

Images

Please check the [product details page](#) for more images. Overall 5 images are available for ABIN1387727.