

Datasheet for ABIN1387728

**anti-Retinol-Binding Protein antibody (AA 45-135)**[Go to Product page](#)**1** Image

## Overview

Quantity:	100 µL
Target:	Retinol-Binding Protein (RBP)
Binding Specificity:	AA 45-135
Reactivity:	Mouse
Host:	Rabbit
Clonality:	Polyclonal
Conjugate:	This Retinol-Binding Protein antibody is un-conjugated
Application:	Western Blotting (WB), Immunohistochemistry (Paraffin-embedded Sections) (IHC (p)), ELISA, Immunohistochemistry (Frozen Sections) (IHC (fro)), Immunofluorescence (Cultured Cells) (IF (cc)), Immunofluorescence (Paraffin-embedded Sections) (IF (p))

## Product Details

Immunogen:	KLH conjugated synthetic peptide derived from human Retinol Binding Protein 1.
Isotype:	IgG
Specificity:	This antibody may detect RBP2 and to a lesser extent, RBP7.
Cross-Reactivity:	Mouse
Predicted Reactivity:	Human,Rat,Dog,Cow,Pig,Chicken,Rabbit
Purification:	Purified by Protein A.

## Target Details

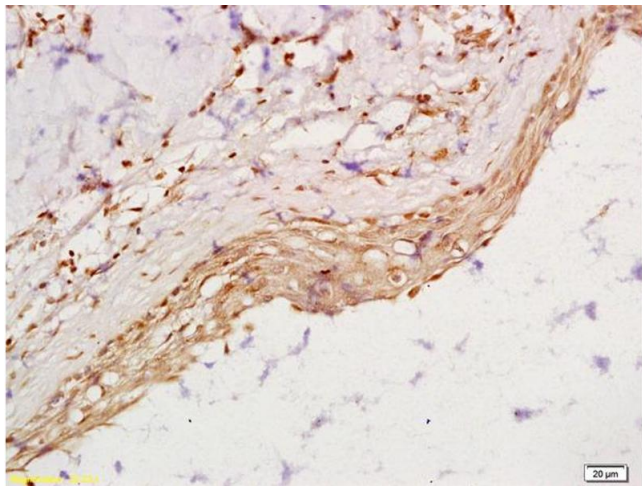
Target:	Retinol-Binding Protein (RBP)
Alternative Name:	Retinol Binding Protein ( <a href="#">RBP Products</a> )
Background:	Synonyms: Cellular retinol binding protein, CRABP I, CRBP1, CRBP2, RBP 1, RBP1, RBP1 protein, RBP2, RBP4, RBPC, Retinol binding protein 1, Retinol binding protein 1 cellular, Retinol binding protein 2 cellular, Retinol binding protein 4 plasma, Retinol binding protein I cellular, RET1_HUMAN. Background: Intracellular transport of retinol.
Gene ID:	5947
UniProt:	<a href="#">P09455</a>

## Application Details

Application Notes:	WB 1:300-5000 ELISA 1:500-1000 IHC-P 1:200-400 IHC-F 1:100-500 IF(IHC-P) 1:50-200 IF(IHC-F) 1:50-200 IF(ICC) 1:50-200
Restrictions:	For Research Use only

## Handling

Format:	Liquid
Concentration:	1 µg/µL
Buffer:	0.01M TBS( pH 7.4) with 1 % BSA, 0.02 % Proclin300 and 50 % Glycerol.
Preservative:	ProClin
Precaution of Use:	This product contains ProClin: a POISONOUS AND HAZARDOUS SUBSTANCE, which should be handled by trained staff only.
Storage:	4 °C, -20 °C
Storage Comment:	Shipped at 4°C. Store at -20°C for one year. Avoid repeated freeze/thaw cycles.
Expiry Date:	12 months



#### Immunohistochemistry

**Image 1.** Formalin-fixed and paraffin embedded rat ovary labeled with Anti-RBP/Retinol binding protein Polyclonal Antibody, Unconjugated (ABIN1387728) at 1:200 followed by conjugation to the secondary antibody and DAB staining