

Datasheet for ABIN1387731  
**anti-beta Synuclein antibody (AA 21-120)**[Go to Product page](#)

## 1 Image

## Overview

Quantity:	100 µL
Target:	beta Synuclein (SNCB)
Binding Specificity:	AA 21-120
Reactivity:	Mouse, Rat
Host:	Rabbit
Clonality:	Polyclonal
Conjugate:	This beta Synuclein antibody is un-conjugated
Application:	ELISA, Immunohistochemistry (Paraffin-embedded Sections) (IHC (p)), Immunofluorescence (Cultured Cells) (IF (cc)), Immunofluorescence (Paraffin-embedded Sections) (IF (p)), Immunohistochemistry (Frozen Sections) (IHC (fro))

## Product Details

Immunogen:	KLH conjugated synthetic peptide derived from human beta Synuclein
Isotype:	IgG
Cross-Reactivity:	Mouse, Rat
Predicted Reactivity:	Human,Dog,Cow,Pig,Rabbit
Purification:	Purified by Protein A.

## Target Details

Target:	beta Synuclein (SNCB)
---------	-----------------------

## Target Details

Alternative Name:	beta synuclein ( <a href="#">SNCB Products</a> )
Background:	<p>Synonyms: beta Synuclein, _ synuclein, Phosphoneuroprotein 14, Beta-synuclein, PNP14, SNCB, Synuclein beta, SYUB_HUMAN.</p> <p>Background: The protein encoded by this gene is highly homologous to alpha-synuclein. These proteins are abundantly expressed in the brain and putatively inhibit phospholipase D2 selectively. The encoded protein, which may play a role in neuronal plasticity, is abundant in neurofibrillary lesions of patients with Alzheimer disease. This protein has been shown to be highly expressed in the substantia nigra of the brain, a region of neuronal degeneration in patients with Parkinson disease, however, no direct relation to Parkinson disease has been established. Two transcript variants encoding the same protein have been found for this gene. [provided by RefSeq, Jul 2008].</p>
Gene ID:	6620

## Application Details

Application Notes:	ELISA 1:500-1000 IHC-P 1:200-400 IHC-F 1:100-500 IF(IHC-P) 1:50-200 IF(IHC-F) 1:50-200 IF(ICC) 1:50-200
Restrictions:	For Research Use only

## Handling

Format:	Liquid
Concentration:	1 µg/µL
Buffer:	0.01M TBS( pH 7.4) with 1 % BSA, 0.02 % Proclin300 and 50 % Glycerol.
Preservative:	ProClin
Precaution of Use:	This product contains ProClin: a POISONOUS AND HAZARDOUS SUBSTANCE, which should be handled by trained staff only.
Storage:	4 °C,-20 °C
Storage Comment:	Shipped at 4°C. Store at -20°C for one year. Avoid repeated freeze/thaw cycles.

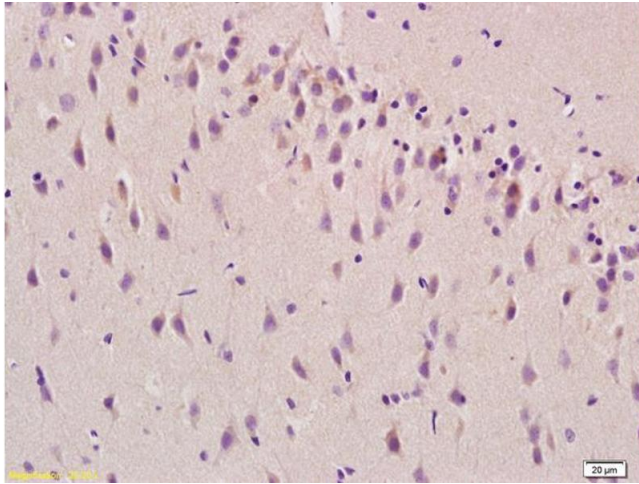
## Handling

---

Expiry Date: 12 months

## Images

---



### Immunohistochemistry

**Image 1.** Formalin-fixed and paraffin embedded rat brain labeled with Anti Beta-synuclein/SNCB Polyclonal Antibody, Unconjugated (ABIN1387731) at 1:200 followed by conjugation to the secondary antibody and DAB staining