

Datasheet for ABIN1387754

anti-ASH1L antibody**2** Images[Go to Product page](#)

Overview

Quantity:	100 µL
Target:	ASH1L
Reactivity:	Human, Rat, Mouse
Host:	Rabbit
Clonality:	Polyclonal
Conjugate:	This ASH1L antibody is un-conjugated
Application:	Immunofluorescence (Paraffin-embedded Sections) (IF (p)), ELISA, Immunohistochemistry (Paraffin-embedded Sections) (IHC (p))

Product Details

Immunogen:	KLH conjugated synthetic peptide derived from human ASH1L
Isotype:	IgG
Cross-Reactivity:	Human, Mouse, Rat
Purification:	Purified by Protein A.

Target Details

Target:	ASH1L
Alternative Name:	ASH1L (ASH1L Products)
Background:	Synonyms: Absent small and homeotic disks protein 1 homolog, Absent Small or Homeotic Like, ASH 1, ASH 1L, ash1 absent small or homeotic 1, Ash1 absent small or homeotic like, Absent small and homeotic disks protein 1 homolog, ASH1-like protein, ASH-1L,

Target Details

ASH1L_HUMAN, ASH1L1, huASH1, Lysine N-methyltransferase 2H, Probable histone-lysine N-methyltransferase ASH1L.

Background: ASH1L is a 2,969 amino acid protein encoded by the human gene ASH1L. ASH1L belongs to the histone-lysine methyltransferase family (SET2 subfamily) and contains three AT hook DNA-binding domains, one AWS domain, one BAH domain, one bromodomain, one PHD-type zinc finger, one post-SET domain and one SET domain. It is a widely expressed nuclear protein with highest expression found in brain, heart and kidney. ASH1L is a histone methyltransferase and is believed to methylate 'Lys-4' of Histone H3, which is a specific tag for epigenetic transcriptional activation.

Gene ID: 55870

Application Details

Application Notes: ELISA 1:500-1000
IHC-P 1:200-400
IF(IHC-P) 1:50-200

Restrictions: For Research Use only

Handling

Format: Liquid

Concentration: 1 µg/µL

Buffer: 0.01M TBS(pH 7.4) with 1 % BSA, 0.02 % Proclin300 and 50 % Glycerol.

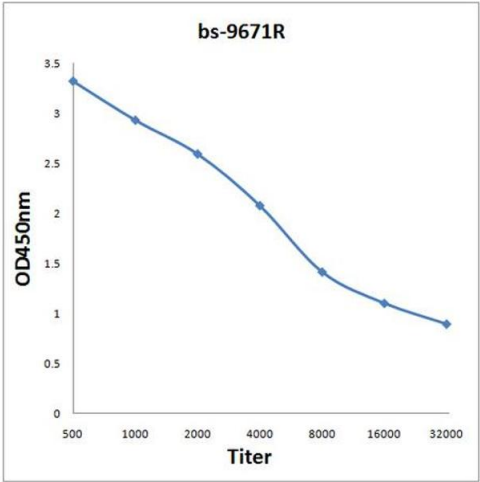
Preservative: ProClin

Precaution of Use: This product contains ProClin: a POISONOUS AND HAZARDOUS SUBSTANCE, which should be handled by trained staff only.

Storage: 4 °C,-20 °C

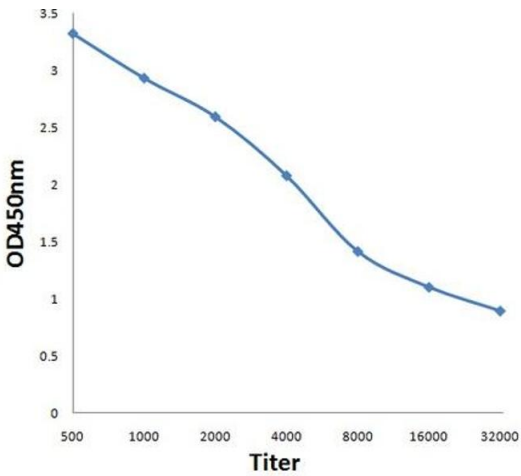
Storage Comment: Shipped at 4°C. Store at -20°C for one year. Avoid repeated freeze/thaw cycles.

Expiry Date: 12 months



ELISA

Image 1. Antigen: 2 µg/100 µL Primary: Antiserum, 1:500, 1:1000, 1:2000, 1:4000, 1:8000, 1:16000, 1:32000; Secondary: HRP conjugated Rabbit Anti-Goat IgG at 1: 5000; TMB staining Read the data in Microplate Reader by 450nm.



ELISA

Image 2. Antigen: 0.2ug/100ul, Primary: Antiserum, 1:500, 1:1000, 1:2000, 1:4000, 1:8000, 1:16000, 1:32000, Secondary: HRP conjugated Goat-Anti-Rabbit IgG at 1: 5000, TMB staining, Read the data in MicroplateReader by 450nm