

Datasheet for ABIN1387798
anti-ENPP1 antibody (AA 41-140)[Go to Product page](#)

1 Image

Overview

Quantity:	100 µL
Target:	ENPP1
Binding Specificity:	AA 41-140
Reactivity:	Mouse
Host:	Rabbit
Clonality:	Polyclonal
Conjugate:	This ENPP1 antibody is un-conjugated
Application:	Western Blotting (WB), ELISA, Immunocytochemistry (ICC), Immunofluorescence (Cultured Cells) (IF (cc)), Immunofluorescence (Paraffin-embedded Sections) (IF (p)), Immunohistochemistry (Paraffin-embedded Sections) (IHC (p)), Immunohistochemistry (Frozen Sections) (IHC (fro))

Product Details

Immunogen:	KLH conjugated synthetic peptide derived from human ENPP1
Isotype:	IgG
Cross-Reactivity:	Mouse
Predicted Reactivity:	Human,Rat,Dog,Pig,Horse,Rabbit
Purification:	Purified by Protein A.

Target Details

Target:	ENPP1
---------	-------

Target Details

Alternative Name:	ENPP1 (ENPP1 Products)
Background:	<p>Synonyms: M6S1, NPP1, NPPS, PC-1, PCA1, ARHR2, COLED, PDNP1, Ectonucleotide pyrophosphatase/phosphodiesterase family member 1, E-NPP 1, Membrane component chromosome 6 surface marker 1, Phosphodiesterase I/nucleotide pyrophosphatase 1, Plasma-cell membrane glycoprotein PC-1, ENPP1, PC1</p> <p>Background: By generating PPi, plays a role in regulating pyrophosphate levels, and functions in bone mineralization and soft tissue calcification. PPi inhibits mineralization by binding to nascent hydroxyapatite (HA) crystals, thereby preventing further growth of these crystals. Preferentially hydrolyzes ATP, but can also hydrolyze other nucleoside 5' triphosphates such as GTP, CTP, TTP and UTP to their corresponding monophosphates with release of pyrophosphate and diadenosine polyphosphates, and also 3',5'-cAMP to AMP. May also be involved in the regulation of the availability of nucleotide sugars in the endoplasmic reticulum and Golgi, and the regulation of purinergic signaling. Appears to modulate insulin sensitivity and function.</p>
Gene ID:	5167
UniProt:	P22413
Pathways:	Regulation of Carbohydrate Metabolic Process

Application Details

Application Notes:	WB 1:300-5000 ELISA 1:500-1000 IHC-P 1:200-400 IHC-F 1:100-500 IF(IHC-P) 1:50-200 IF(IHC-F) 1:50-200 IF(ICC) 1:50-200 ICC 1:100-500
Restrictions:	For Research Use only

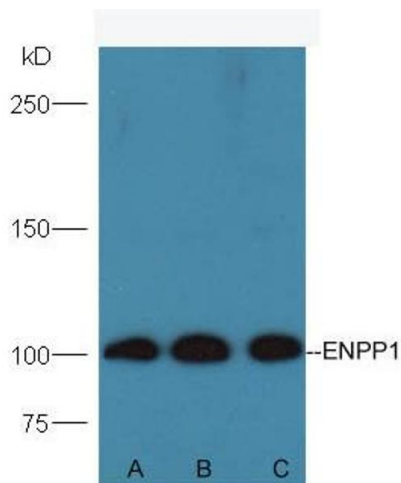
Handling

Format:	Liquid
Concentration:	1 µg/µL

Handling

Buffer:	0.01M TBS(pH 7.4) with 1 % BSA, 0.02 % Proclin300 and 50 % Glycerol.
Preservative:	ProClin
Precaution of Use:	This product contains ProClin: a POISONOUS AND HAZARDOUS SUBSTANCE, which should be handled by trained staff only.
Storage:	4 °C,-20 °C
Storage Comment:	Shipped at 4°C. Store at -20°C for one year. Avoid repeated freeze/thaw cycles.
Expiry Date:	12 months

Images



Western Blotting

Image 1. Lane A: Mouse testis lysates Lane B: Mouse kidney lysates Lane C: Mouse pancreas lysates. Probed with Anti-ENPP1 Polyclonal Antibody, Unconjugated (ABIN1387798) at 1:300 overnight at 4 °C. Followed by conjugation to secondary antibody at 1:5000 for 90 min at 37 °C. Predicted band 100kD. Observed band size: 100kD.