



[Go to Product page](#)

Datasheet for ABIN1387805

anti-LCA5 antibody

1 Image

Overview

| | |
|--------------|---|
| Quantity: | 100 µL |
| Target: | LCA5 |
| Reactivity: | Human, Mouse, Rat |
| Host: | Rabbit |
| Clonality: | Polyclonal |
| Conjugate: | This LCA5 antibody is un-conjugated |
| Application: | Western Blotting (WB), Immunofluorescence (Paraffin-embedded Sections) (IF (p)), Immunohistochemistry (Paraffin-embedded Sections) (IHC (p)) |

Product Details

| | |
|-------------------|--|
| Immunogen: | KLH conjugated synthetic peptide derived from human LCA5 |
| Isotype: | IgG |
| Cross-Reactivity: | Human, Mouse, Rat |
| Purification: | Purified by Protein A. |

Target Details

| | |
|-------------------|--|
| Target: | LCA5 |
| Alternative Name: | LCA5 (LCA5 Products) |
| Background: | Synonyms: C6orf152, LCA5, Leber congenital amaurosis 5, Leber congenital amaurosis 5 protein, ORF64, RGD1308555. Background: Leber congenital amaurosis (LCA) is one of the most common causes of |

Target Details

hereditary blindness or severe visual impairment in infants. Mutations in several genes with diverse functions mapping to two loci have been implicated in LCA causation. These proteins are involved in processes such as photoreceptor development and maintenance, phototransduction, vitamin A metabolism and protein trafficking. LCA5, also known as Lebercilin, is a ciliary protein that is widely expressed during development and localizes to the connecting cilia of photoreceptors and to the microtubules, centrioles and primary cilia of cultured mammalian cells. The Leber congenital amaurosis 5-like protein (LCA5L) is a 670 amino acid protein that belongs to the LCA5 family.

Gene ID: 167691

Application Details

Application Notes: WB 1:300-5000
IHC-P 1:200-400
IF(IHC-P) 1:50-200

Restrictions: For Research Use only

Handling

Format: Liquid

Concentration: 1 µg/µL

Buffer: 0.01M TBS(pH 7.4) with 1 % BSA, 0.02 % Proclin300 and 50 % Glycerol.

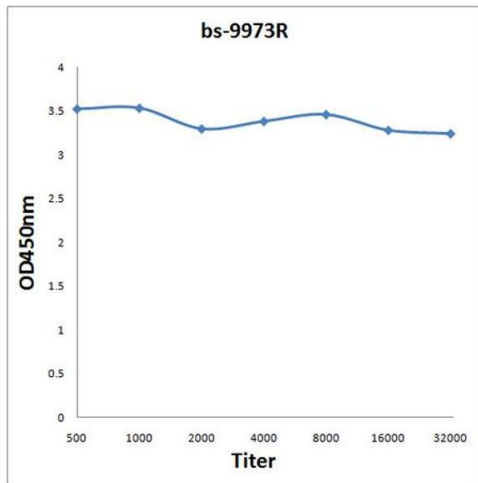
Preservative: ProClin

Precaution of Use: This product contains ProClin: a POISONOUS AND HAZARDOUS SUBSTANCE, which should be handled by trained staff only.

Storage: 4 °C,-20 °C

Storage Comment: Shipped at 4°C. Store at -20°C for one year. Avoid repeated freeze/thaw cycles.

Expiry Date: 12 months



ELISA

Image 1. Antigen: 2 µg/100 µL Primary: Antiserum, 1:500, 1:1000, 1:2000, 1:4000, 1:8000, 1:16000, 1:32000, Secondary: HRP conjugated Rabbit Anti-Goat IgG at 1:5000, TMB staining Read the data in Microplate Reader by 450 nm.