



Datasheet for ABIN1387807
anti-Sorbs2 antibody (AA 401-500)



[Go to Product page](#)

2 Images

Overview

Quantity:	100 µL
Target:	Sorbs2
Binding Specificity:	AA 401-500
Reactivity:	Human, Mouse, Rat
Host:	Rabbit
Clonality:	Polyclonal
Conjugate:	This Sorbs2 antibody is un-conjugated
Application:	Western Blotting (WB), ELISA, Immunofluorescence (Cultured Cells) (IF (cc)), Immunofluorescence (Paraffin-embedded Sections) (IF (p)), Immunohistochemistry (Paraffin-embedded Sections) (IHC (p)), Immunohistochemistry (Frozen Sections) (IHC (fro))

Product Details

Immunogen:	KLH conjugated synthetic peptide derived from human SORBS2/ArgBP2
Isotype:	IgG
Cross-Reactivity:	Human, Mouse, Rat
Predicted Reactivity:	Dog,Pig,Horse,Chicken,Rabbit
Purification:	Purified by Protein A.

Target Details

Target:	Sorbs2
---------	--------

Target Details

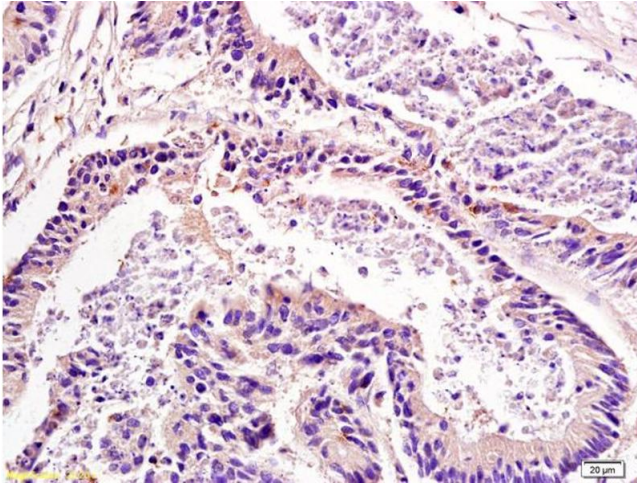
Alternative Name:	SORBS2 (Sorbs2 Products)
Background:	<p>Synonyms: ARGBP2, PRO618, Sorbin and SH3 domain-containing protein 2, Arg/Abl-interacting protein 2, Sorbin, SORBS2, KIAA777</p> <p>Background: Adapter protein that plays a role in the assembling of signaling complexes, being a link between ABL kinases and actin cytoskeleton. Can form complex with ABL1 and CBL, thus promoting ubiquitination and degradation of ABL1 or with AKT1 and PAK1, thus mediating AKT1-mediated activation of PAK1. Isoform 6 increases water and sodium absorption in the intestine and gall-bladder.</p>
Gene ID:	8470
UniProt:	O94875

Application Details

Application Notes:	WB 1:300-5000 ELISA 1:500-1000 IHC-P 1:200-400 IHC-F 1:100-500 IF(IHC-P) 1:50-200 IF(IHC-F) 1:50-200 IF(ICC) 1:50-200
Restrictions:	For Research Use only

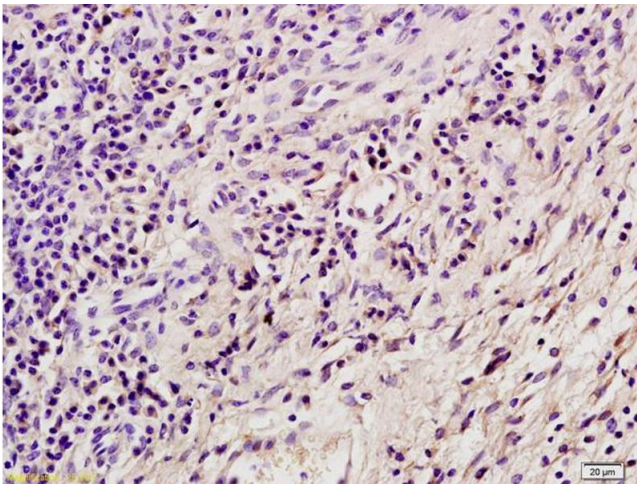
Handling

Format:	Liquid
Concentration:	1 µg/µL
Buffer:	0.01M TBS(pH 7.4) with 1 % BSA, 0.02 % Proclin300 and 50 % Glycerol.
Preservative:	ProClin
Precaution of Use:	This product contains ProClin: a POISONOUS AND HAZARDOUS SUBSTANCE, which should be handled by trained staff only.
Storage:	4 °C,-20 °C
Storage Comment:	Shipped at 4°C. Store at -20°C for one year. Avoid repeated freeze/thaw cycles.
Expiry Date:	12 months



Immunohistochemistry

Image 1. Formalin-fixed and paraffin embedded human colon carcinoma labeled with Anti SORBS2 Polyclonal Antibody, Unconjugated (ABIN1387807) at 1:200 followed by conjugation to the secondary antibody and DAB staining



Immunohistochemistry

Image 2. Formalin-fixed and paraffin embedded mouse tumor tissue labeled with Anti SORBS2 Polyclonal Antibody, Unconjugated (ABIN1387807) at 1:200 followed by conjugation to the secondary antibody and DAB staining