

Datasheet for ABIN1387819

anti-SLC40A1 antibody (AA 331-430)



[Go to Product page](#)

3 Images

2 Publications

Overview

Quantity:	100 µL
Target:	SLC40A1
Binding Specificity:	AA 331-430
Reactivity:	Human, Mouse, Chicken
Host:	Rabbit
Clonality:	Polyclonal
Conjugate:	This SLC40A1 antibody is un-conjugated
Application:	Western Blotting (WB), ELISA, Immunohistochemistry (Paraffin-embedded Sections) (IHC (p))

Product Details

Immunogen:	KLH conjugated synthetic peptide derived from human SLC40A1/FPN1
Isotype:	IgG
Cross-Reactivity:	Chicken, Human, Mouse
Predicted Reactivity:	Rat,Dog,Pig,Rabbit
Purification:	Purified by Protein A.

Target Details

Target:	SLC40A1
Alternative Name:	SLC40A1 (SLC40A1 Products)
Background:	Synonyms: FPN1, HFE4, MTP1, IREG1, MST079, MSTP079, SLC11A3, Solute carrier family 40

Target Details

member 1, Ferroportin-1, Iron-regulated transporter 1, SLC40A1

Background: May be involved in iron export from duodenal epithelial cell and also in transfer of iron between maternal and fetal circulation. Mediates iron efflux in the presence of a ferroxidase (hephaestin and/or ceruloplasmin).

Gene ID: 30061

UniProt: [Q9NP59](#)

Pathways: [Transition Metal Ion Homeostasis](#)

Application Details

Application Notes: WB 1:300-5000
ELISA 1:500-1000
IHC-P 1:200-400

Restrictions: For Research Use only

Handling

Format: Liquid

Concentration: 1 µg/µL

Buffer: 0.01M TBS(pH 7.4) with 1 % BSA, 0.02 % Proclin300 and 50 % Glycerol.

Preservative: ProClin

Precaution of Use: This product contains ProClin: a POISONOUS AND HAZARDOUS SUBSTANCE, which should be handled by trained staff only.

Storage: 4 °C, -20 °C

Storage Comment: Shipped at 4°C. Store at -20°C for one year. Avoid repeated freeze/thaw cycles.

Expiry Date: 12 months

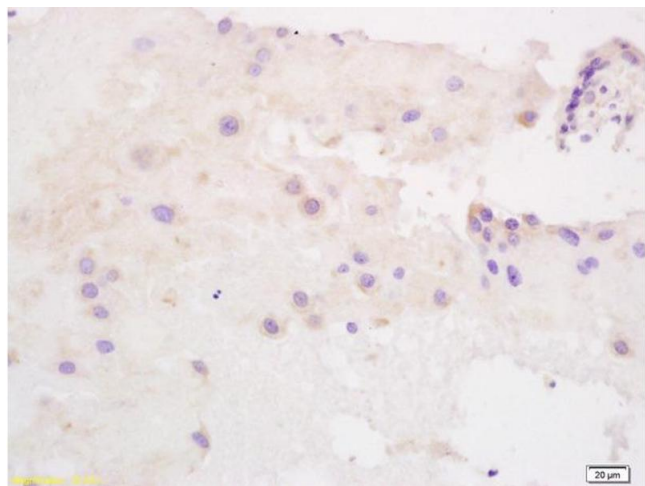
Publications

Product cited in: Zhang, Li, Liao, Zhang, Lu, Luo: "Effect of iron source on iron absorption and gene expression of iron transporters in the ligated duodenal loops of broilers." in: **Journal of animal science**, Vol. 95, Issue 4, pp. 1587-1597, (2017) ([PubMed](#)).

Rychtarcikova, Lettlova, Tomkova, Korenkova, Langerova, Simonova, Zjablovskaja, Alberich-

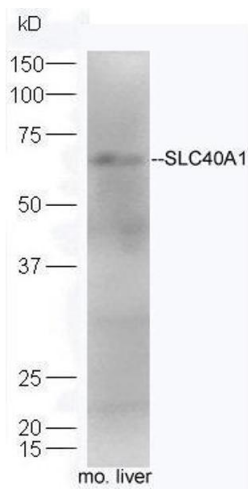
Jorda, Neuzil, Truksa: "Tumor-initiating cells of breast and prostate origin show alterations in the expression of genes related to iron metabolism." in: **Oncotarget**, Vol. 8, Issue 4, pp. 6376-6398, (2016) ([PubMed](#)).

Images



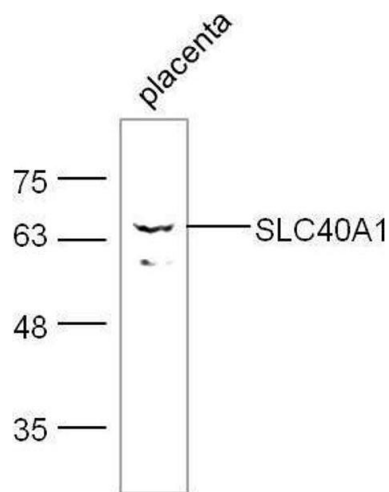
Immunohistochemistry

Image 1. Formalin-fixed and paraffin embedded human placenta labeled with Anti SLC40A1/FPN1 Polyclonal Antibody, Unconjugated (ABIN1387819) at 1:200 followed by conjugation to the secondary antibody and DAB staining



Western Blotting

Image 2. Mouse liver lysates probed with Rabbit Anti SLC40A1 Polyclonal Antibody, Unconjugated at 1:5000 for 90 min at 37°C.



Western Blotting

Image 3. Mouse placenta lysates probed with Rabbit Anti Polyclonal Antibody, Unconjugated at 1:500 for 90 min at 37°C.