

Datasheet for ABIN1387827
anti-P2RY10 antibody (AA 151-250)[Go to Product page](#)

2 Images

Overview

Quantity:	100 µL
Target:	P2RY10
Binding Specificity:	AA 151-250
Reactivity:	Human, Mouse
Host:	Rabbit
Clonality:	Polyclonal
Conjugate:	This P2RY10 antibody is un-conjugated
Application:	Western Blotting (WB), ELISA, Flow Cytometry (FACS), Immunohistochemistry (Paraffin-embedded Sections) (IHC (p))

Product Details

Immunogen:	KLH conjugated synthetic peptide derived from human P2Y10
Isotype:	IgG
Cross-Reactivity:	Human, Mouse
Predicted Reactivity:	Rat,Horse,Rabbit
Purification:	Purified by Protein A.

Target Details

Target:	P2RY10
Alternative Name:	P2Y10 (P2RY10 Products)

Target Details

Background:	<p>Synonyms: G protein coupled purinergic receptor P2Y10, P2ry10, P2Y like receptor, P2Y purinoceptor 10, P2Y-like receptor, P2Y10, P2Y10_HUMAN, Purinergic receptor P2Y G protein coupled 10, Putative P2Y purinoceptor 10.</p> <p>Background: Nucleotides are important extracellular signaling molecules that mediate several events, such as cell proliferation, differentiation, chemotaxis and cytokine release. The P2 receptor family is activated by the binding of nucleotides and is divided into two subfamilies, designated P2X and P2Y. The P2Y receptor family are G protein-coupled receptors that mediate the effects of extracellular nucleotides, primarily through the activation of phospholipase C (PLC). To some extent, the P2Y receptors can also activate potassium channels or, alternatively, inhibit adenylate cyclase and N-type calcium channels in response to extracellular nucleotides. P2Y10 (purinergic receptor P2Y, G-protein coupled, 10), also known as P2RY10, is a 339 amino acid multi-pass membrane protein that is thought to act as a receptor for purines coupled to G-proteins. P2Y10 is found at low levels in blood leukocytes and is upregulated during promyelocytic cell differentiation.</p>
Gene ID:	27334
UniProt:	O00398

Application Details

Application Notes:	WB 1:300-5000 ELISA 1:500-1000 FCM 1:20-100 IHC-P 1:200-400
Restrictions:	For Research Use only

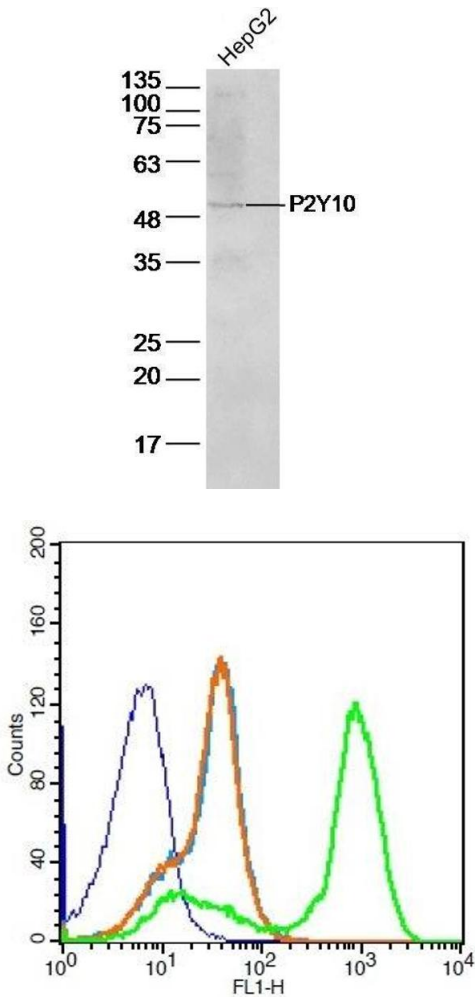
Handling

Format:	Liquid
Concentration:	1 µg/µL
Buffer:	0.01M TBS(pH 7.4) with 1 % BSA, 0.02 % Proclin300 and 50 % Glycerol.
Preservative:	ProClin
Precaution of Use:	This product contains ProClin: a POISONOUS AND HAZARDOUS SUBSTANCE, which should be handled by trained staff only.
Storage:	4 °C,-20 °C

Handling

Storage Comment:	Shipped at 4°C. Store at -20°C for one year. Avoid repeated freeze/thaw cycles.
Expiry Date:	12 months

Images



Western Blotting

Image 1. HepG2 Cell lysates probed with P2Y10 Polyclonal Antibody, unconjugated at 1:500 overnight at 4°C followed by a conjugated secondary antibody for 60 minutes at 37°C.

Flow Cytometry

Image 2. Mouse Spleen Cells probed with P2Y10 Polyclonal Antibody, PE Conjugated -PE)(green) at 1:100 for 30 minutes compared to unstained cells (blue), secondary only (light blue), and isotype control (orange).