



[Go to Product page](#)

Datasheet for ABIN1387832
anti-MPL antibody (AA 401-500)

1 Image

Overview

| | |
|----------------------|--|
| Quantity: | 100 µL |
| Target: | MPL |
| Binding Specificity: | AA 401-500 |
| Reactivity: | Human, Mouse |
| Host: | Rabbit |
| Clonality: | Polyclonal |
| Conjugate: | This MPL antibody is un-conjugated |
| Application: | Western Blotting (WB), ELISA, Flow Cytometry (FACS), Immunohistochemistry (Paraffin-embedded Sections) (IHC (p)) |

Product Details

| | |
|-----------------------|--|
| Immunogen: | KLH conjugated synthetic peptide derived from human TPOR |
| Isotype: | IgG |
| Cross-Reactivity: | Human, Mouse |
| Predicted Reactivity: | Rat,Rabbit |
| Purification: | Purified by Protein A. |

Target Details

| | |
|-------------------|---------------------------------------|
| Target: | MPL |
| Alternative Name: | TPOR (MPL Products) |

Target Details

| | |
|-------------|--|
| Background: | <p>Synonyms: C MPL, C-MPL, CMPL, CD110, CD 110, MPL, MPLV, Myeloproliferative leukemia protein, Myeloproliferative leukemia virus oncogene, Proto-oncogene c-Mpl, THCYT2, Thrombopoietin receptor, TPO R, TPO-R, TPOR, TPOR_HUMAN.</p> <p>Background: Thrombopoietin (TPO or THPO), also known as c-Mpl ligand (c-Mpl L), is a cytokine that plays a central role in megakaryopoiesis by influencing the development and maturation of megakaryocytes and platelet production from hematopoietic stem cells. TPO exerts its biological effects through the TPO receptor, c-Mpl. c-Mpl is a member of the cytokine receptor superfamily. Expression of c-Mpl is restricted to hematopoietic tissues and cells, such as bone marrow, spleen, fetal liver and CD34+ cells. Stimulation of c-Mpl with TPO results in the activation of the Janus tyrosine kinase family members, Tyk 2 and JAK2, which in turn phosphorylate Stat5 and Stat3, causing their nuclear translocation and the transcription of Stat responsive genes. Mutations in c-Mpl have been implicated as the cause of certain human disorders, including congenital amegakaryocytic thrombocytopenia (CAMT) and thrombocytopenia with absent radii (TAR) syndrome.</p> |
|-------------|--|

| | |
|-----------|------------------------------------|
| Pathways: | JAK-STAT Signaling |
|-----------|------------------------------------|

Application Details

| | |
|--------------------|--|
| Application Notes: | WB 1:300-5000 ELISA 1:500-1000 FCM 1:20-100 IHC-P 1:200-400 |
|--------------------|--|

| | |
|---------------|-----------------------|
| Restrictions: | For Research Use only |
|---------------|-----------------------|

Handling

| | |
|---------|--------|
| Format: | Liquid |
|---------|--------|

| | |
|----------------|---------|
| Concentration: | 1 µg/µL |
|----------------|---------|

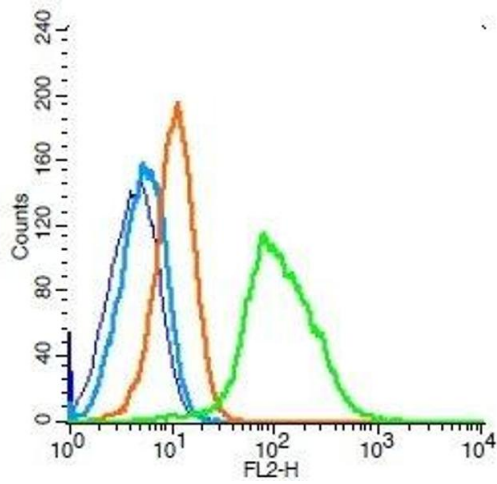
| | |
|---------|---|
| Buffer: | 0.01M TBS(pH 7.4) with 1 % BSA, 0.02 % Proclin300 and 50 % Glycerol. |
|---------|---|

| | |
|---------------|---------|
| Preservative: | ProClin |
|---------------|---------|

| | |
|--------------------|--|
| Precaution of Use: | This product contains ProClin: a POISONOUS AND HAZARDOUS SUBSTANCE, which should be handled by trained staff only. |
|--------------------|--|

| | |
|----------|-------------|
| Storage: | 4 °C,-20 °C |
|----------|-------------|

| | |
|------------------|---|
| Storage Comment: | Shipped at 4°C. Store at -20°C for one year. Avoid repeated freeze/thaw cycles. |
|------------------|---|



Flow Cytometry

Image 1. Human Raji cells probed with TPOR Polyclonal Antibody, Unconjugated (green) at 1:100 for 30 minutes followed by a PE conjugated secondary antibody compared to unstained cells (blue), secondary only (light blue), and isotype control (orange).