



Datasheet for ABIN1387834

## anti-SLC16A2/MCT8 antibody (AA 101-200)



[Go to Product page](#)

### 4 Images

#### Overview

Quantity:	100 µL
Target:	SLC16A2/MCT8 (SLC16A2)
Binding Specificity:	AA 101-200
Reactivity:	Human, Mouse, Rat
Host:	Rabbit
Clonality:	Polyclonal
Conjugate:	This SLC16A2/MCT8 antibody is un-conjugated
Application:	Western Blotting (WB), ELISA

#### Product Details

Immunogen:	KLH conjugated synthetic peptide derived from human MOT8/SLC16A2
Isotype:	IgG
Cross-Reactivity:	Human, Mouse, Rat
Predicted Reactivity:	Rabbit
Purification:	Purified by Protein A.

#### Target Details

Target:	SLC16A2/MCT8 (SLC16A2)
Alternative Name:	MOT8/SLC16A2 ( <a href="#">SLC16A2 Products</a> )
Background:	Synonyms: AHDS, MCT7, MCT8, XPCT, MCT 7, MCT 8, MRX22, DXS128, DXS128E,

## Target Details

---

Monocarboxylate transporter 8, Monocarboxylate transporter 7, Solute carrier family 16 member 2, X-linked PEST-containing transporter, SLC16A2

Background: Very active and specific thyroid hormone transporter. Stimulates cellular uptake of thyroxine (T4), triiodothyronine (T3), reverse triiodothyronine (rT3) and diiodothyronine. Does not transport Leu, Phe, Trp or Tyr (By similarity).

Gene ID: 6567

UniProt: [P36021](#)

Pathways: [Hormone Transport](#)

## Application Details

---

Application Notes:

- WB 1:300-5000
- ELISA 1:500-1000
- FCM 1:20-100
- IHC-P 1:200-400
- IHC-F 1:100-500
- IF(IHC-P) 1:50-200
- IF(IHC-F) 1:50-200
- IF(ICC) 1:50-200
- ICC 1:100-500

Restrictions: For Research Use only

## Handling

---

Format: Liquid

Concentration: 1 µg/µL

Buffer: 0.01M TBS( pH 7.4) with 1 % BSA, 0.02 % Proclin300 and 50 % Glycerol.

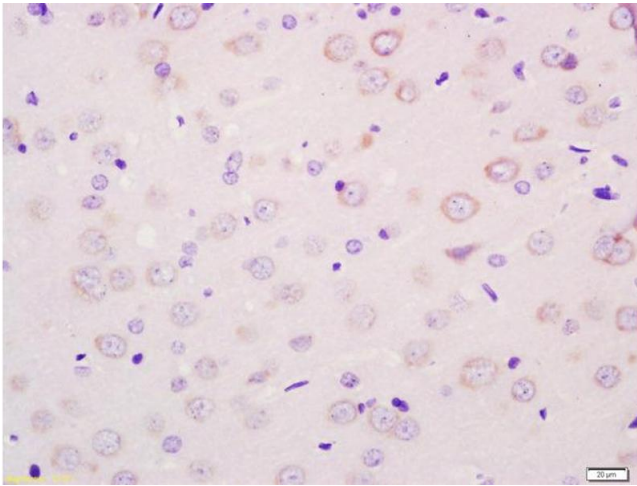
Preservative: ProClin

Precaution of Use: This product contains ProClin: a POISONOUS AND HAZARDOUS SUBSTANCE, which should be handled by trained staff only.

Storage: 4 °C, -20 °C

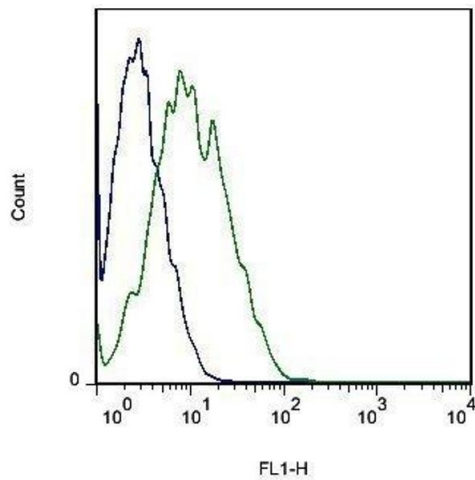
Storage Comment: Shipped at 4°C. Store at -20°C for one year. Avoid repeated freeze/thaw cycles.

Expiry Date: 12 months



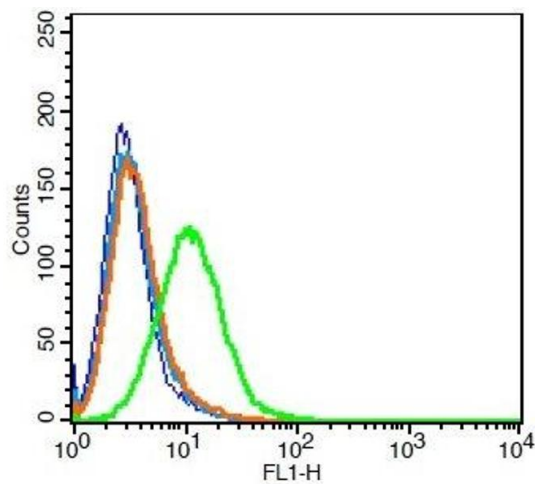
### Immunohistochemistry

**Image 1.** Formalin-fixed and paraffin embedded rat brain labeled with Anti-MOT8/SLC16A2 Polyclonal Antibody, Unconjugated (ABIN1387834) at 1:200 followed by conjugation to the secondary antibody and DAB staining



### Flow Cytometry

**Image 2.** Mouse cells probed with Rabbit Anti-MOT8/SLC16A2 Polyclonal Antibody .



### Flow Cytometry

**Image 3.** Rat H9C2 cells probed with Rabbit Anti-MOT8/SLC16A2 Polyclonal Antibody, Unconjugated at 3ug for 30 minutes followed by incubation with a conjugated secondary -FITC(green) for 30 minutes compared to control cells (blue), secondary only (light blue) and isotype control (orange).

Please check the [product details page](#) for more images. Overall 4 images are available for ABIN1387834.