

Datasheet for ABIN1387838
anti-CHRM4 antibody (AA 1-31)

3 Images

[Go to Product page](#)

Overview

Quantity:	100 µL
Target:	CHRM4
Binding Specificity:	AA 1-31
Reactivity:	Human
Host:	Rabbit
Clonality:	Polyclonal
Conjugate:	This CHRM4 antibody is un-conjugated
Application:	ELISA, Flow Cytometry (FACS), Immunofluorescence (Cultured Cells) (IF (cc)), Immunofluorescence (Paraffin-embedded Sections) (IF (p)), Immunocytochemistry (ICC), Immunohistochemistry (Paraffin-embedded Sections) (IHC (p)), Immunohistochemistry (Frozen Sections) (IHC (fro))

Product Details

Immunogen:	KLH conjugated synthetic peptide derived from human CHRM4/mAChR M4
Isotype:	IgG
Cross-Reactivity:	Human
Predicted Reactivity:	Mouse,Rat,Rabbit
Purification:	Purified by Protein A.

Target Details

Target:	CHRM4
---------	-------

Target Details

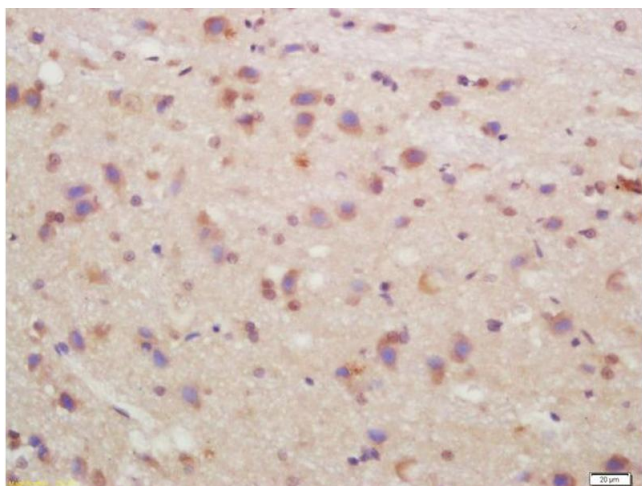
Alternative Name:	CHRM4/mAChR M4 (CHRM4 Products)
Background:	Synonyms: HM4, M4R, Muscarinic acetylcholine receptor M4, CHRM4 Background: The muscarinic acetylcholine receptor mediates various cellular responses, including inhibition of adenylate cyclase, breakdown of phosphoinositides and modulation of potassium channels through the action of G proteins. Primary transducing effect is inhibition of adenylate cyclase.
Gene ID:	1132
UniProt:	P08173
Pathways:	cAMP Metabolic Process , Inositol Metabolic Process , Synaptic Membrane

Application Details

Application Notes:	ELISA 1:500-1000 FCM 1:20-100 IHC-P 1:200-400 IHC-F 1:100-500 IF(IHC-P) 1:50-200 IF(IHC-F) 1:50-200 IF(ICC) 1:50-200 ICC 1:100-500
Restrictions:	For Research Use only

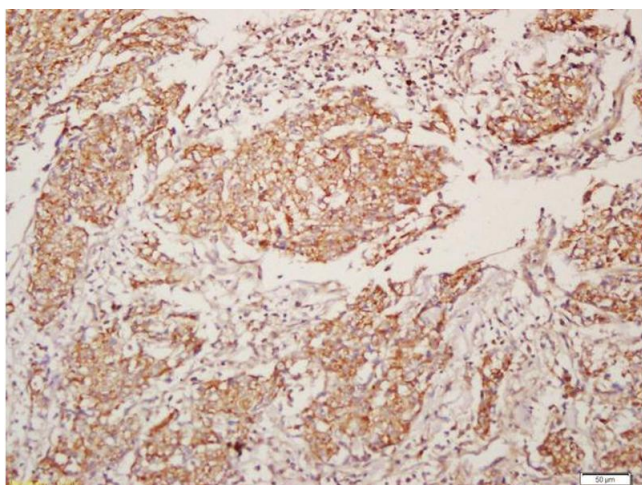
Handling

Format:	Liquid
Concentration:	1 µg/µL
Buffer:	0.01M TBS(pH 7.4) with 1 % BSA, 0.02 % Proclin300 and 50 % Glycerol.
Preservative:	ProClin
Precaution of Use:	This product contains ProClin: a POISONOUS AND HAZARDOUS SUBSTANCE, which should be handled by trained staff only.
Storage:	4 °C,-20 °C
Storage Comment:	Shipped at 4°C. Store at -20°C for one year. Avoid repeated freeze/thaw cycles.
Expiry Date:	12 months



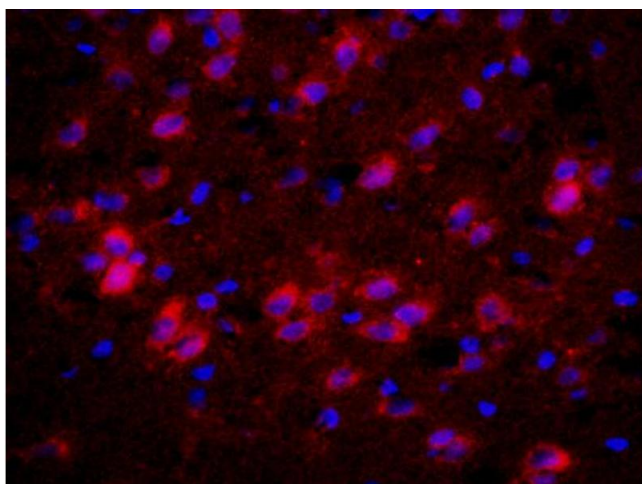
Immunohistochemistry

Image 1. Formalin-fixed and paraffin embedded rat brain labeled with Anti-CHRM4/mAChR M4 Polyclonal Antibody, Unconjugated (ABIN1387838) at 1:200, followed by conjugation to the secondary antibody and DAB staining



Immunohistochemistry

Image 2. Formalin-fixed and paraffin embedded human lung carcinoma labeled with Anti-CHRM4/mAChR M4 Polyclonal Antibody, Unconjugated (ABIN1387838) at 1:200, followed by conjugation to the secondary antibody and DAB staining



Immunofluorescence

Image 3. Formalin-fixed and paraffin-embedded rat brain labeled with Anti-CHRM4/mAChR M4 Polyclonal Antibody, Unconjugated (ABIN1387838) 1:200, overnight at 4°C, The secondary antibody was Goat Anti-Rabbit IgG, PE conjugated used at 1:200 dilution for 40 minutes at 37°C.