

Datasheet for ABIN1387850
anti-ATP13A2 antibody (AA 1001-1080)[Go to Product page](#)

1 Image

Overview

Quantity:	100 µL
Target:	ATP13A2
Binding Specificity:	AA 1001-1080
Reactivity:	Rat
Host:	Rabbit
Clonality:	Polyclonal
Conjugate:	This ATP13A2 antibody is un-conjugated
Application:	ELISA, Immunofluorescence (Cultured Cells) (IF (cc)), Immunofluorescence (Paraffin-embedded Sections) (IF (p)), Immunohistochemistry (Frozen Sections) (IHC (fro)), Immunohistochemistry (Paraffin-embedded Sections) (IHC (p)), Immunocytochemistry (ICC)

Product Details

Immunogen:	KLH conjugated synthetic peptide derived from human ATP13A2
Isotype:	IgG
Cross-Reactivity:	Rat
Predicted Reactivity:	Human, Mouse, Cow, Pig, Horse, Rabbit
Purification:	Purified by Protein A.

Target Details

Target:	ATP13A2
---------	---------

Target Details

Alternative Name: PARK9/ATP13A2 ([ATP13A2 Products](#))

Background: Synonyms: AT132_HUMAN, Atp13a2, ATPase type 13A2, CLN12, HSA9947, KRPPD, PARK9, Probable cation transporting ATPase 13A2, Probable cation-transporting ATPase 13A2, Putative ATPase, RP1-37C10.4.

Background: ATP13A2 is a 1,180 amino acid multi-pass membrane protein that belongs to the P5 subfamily of ATPases which play an important role in the transportation of inorganic cations. Expressed as multiple alternative spliced isoforms, ATP13A2 functions to catalyze the conversion of ATP to ADP and a free phosphate, thereby participating in the active transport of ions across cellular membranes. Defects in the gene encoding ATP13A2 are the cause of Kufor-Rakeb syndrome (KRS), a rare hereditary type of Parkinson's disease that exhibits juvenile onset and is characterized by neurodegeneration and dementia. The ATP13A2 gene maps to human chromosome 1, which spans 260 million base pairs, contains over 3,000 genes and comprises nearly 8 % of the human genome.

Pathways: [Ribonucleoside Biosynthetic Process](#)

Application Details

Application Notes: ELISA 1:500-1000
IHC-P 1:200-400
IHC-F 1:100-500
IF(IHC-P) 1:50-200
IF(IHC-F) 1:50-200
IF(ICC) 1:50-200
ICC 1:100-500

Restrictions: For Research Use only

Handling

Format: Liquid

Concentration: 1 µg/µL

Buffer: 0.01M TBS(pH 7.4) with 1 % BSA, 0.02 % Proclin300 and 50 % Glycerol.

Preservative: ProClin

Precaution of Use: This product contains ProClin: a POISONOUS AND HAZARDOUS SUBSTANCE, which should be handled by trained staff only.

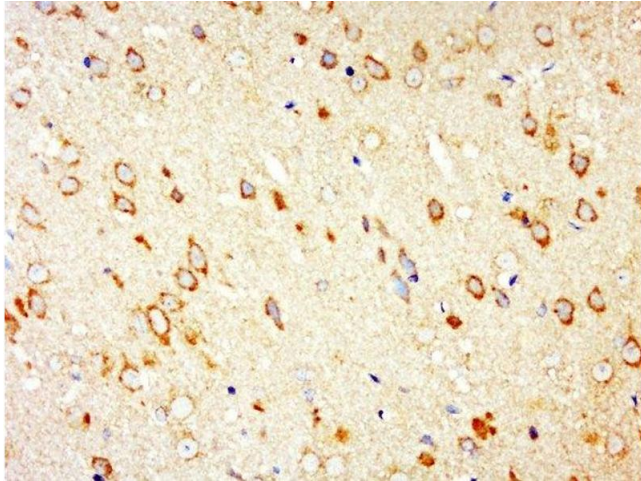
Handling

Storage: 4 °C, -20 °C

Storage Comment: Shipped at 4°C. Store at -20°C for one year. Avoid repeated freeze/thaw cycles.

Expiry Date: 12 months

Images



Immunohistochemistry (Paraffin-embedded Sections)

Image 1. Paraformaldehyde-fixed, paraffin embedded rat brain, Antigen retrieval by boiling in sodium citrate buffer (pH6.0) for 15min, Block endogenous peroxidase by 3% hydrogen peroxide for 20 minutes, Blocking buffer (normal goat serum) at 37°C for 30min, Antibody incubation with PARK9/ATP13A2 Polyclonal Antibody, Unconjugated at 1:400 overnight at 4°C, followed by a conjugated secondary for 20 minutes and DAB staining.